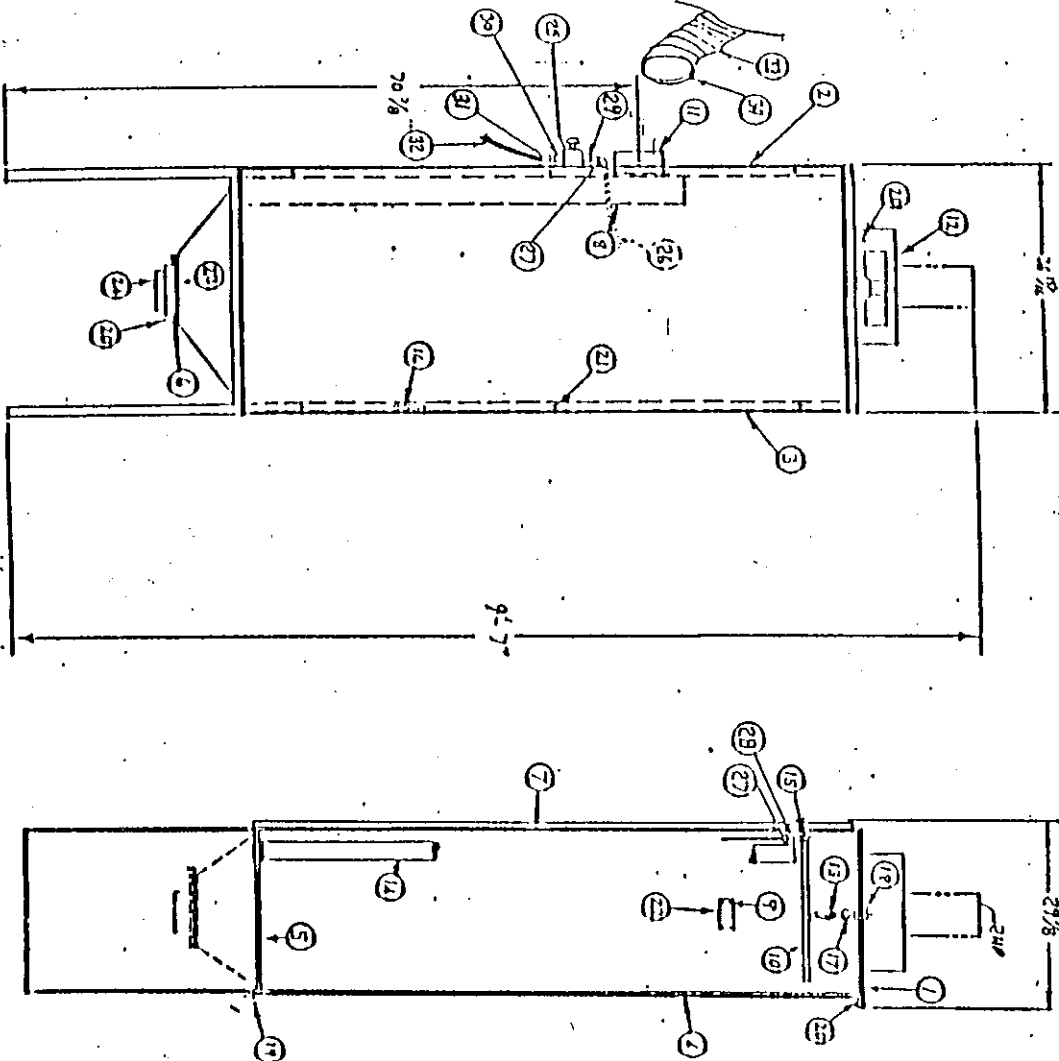


903002



NOTES:  
 1) BUTYLE CAULK ALL SEAMS.  
 2) BAG MACHINE TO FLOOR.  
 3) SHAKER BUTTAW(30-144)  
 MAY BE REMOVED  
 LOCATED.

ITEM #	QTY.	DESCRIPTION	PART #
1	1	TOP	001048
2	1	LEFT SIDE	001053
3	1	RIGHT SIDE	001052
4	1	BACK PLATE	001050
5	1	SLIP ASS'Y	001010
6	2	SPACER	000329
7	1	DOOR	001049
8	1	FLANGE	001057
9	4	1/8" POP RIVETS	30-136
10	1	DUST BAG MOUNT ASS'Y	001066
11	1	INLET FLANGE ASS'Y	001046
12	1	900 RPM BLOWER ASS'Y	001063
13	2	SPRING	15-721
14	40	DUST BAG	11-363
15	1	SHAKER	16-919
16	17	1/4" x 1" GASKET	24-025
17	2	3/16" EYE BOLT	000379
18	4	3/16" HEX NUT	30-500
19	22	1/4" x 1" SELF TAPPER	30-148
20	92	1/4" x 3/4" SELF TAPPER	30-147
21	6	1/4" VING NUT	30-510
22	1	SERIAL PLATE	01-001
23	1	SLIDE GATE	000324
24	1	OUTLET FLANGE	000725
25	1	SHAKER VALVE	16-830
26	3'	1/4" AIR HOSE	18-074
27	2	1/4" SCREW CLAMP	21-046
28	1	1/8" x 1/4" HOSE BARB	14-316
29	1	1/4" x 1/4" HOSE BARB	14-313
30	1	1/4" x 1/8" BUSHING	14-308
31	1	MALE CONNECTOR	16-951
32	1	1/4" PLASTIC HOSE	18-111
33	5'	FLEX HOSE 8"	19-098
34	2	SCREW CLAMP	21-038
35		CUT SHEET	001082

**BLAST-IT-ALL**

D-20

TOLERANCES		REVISIONS	
FINISH	ASSEMBLY	NO.	DATE
1	1/16" ±	1	10/21/68
2	1/32" ±	2	10/21/68
3	1/64" ±	3	10/21/68
4	1/128" ±	4	10/21/68
5	1/256" ±	5	10/21/68

903002