

BLAST-IT-ALL®

**LARRY HESS & ASSOCIATES, INC.
185 PIPER LANE
SALISBURY, NC 28144 USA
704-637-3300**

EQUIPMENT MANUAL

6036-P, 6048-P

NUMBER MM-448

DATE: MARCH 2, 1999

REVISED DATE: JUNE 26, 2001

REVISED DATE: MAY 9, 2006

WARNING

DO NOT USE *SAND*. SAND WILL CAUSE SILICA DUST, WHICH IS THE CAUSE OF SILICOSIS DISEASE, A CONDITION OF MASSIVE FIBROSIS OF THE LUNGS. *THIS STATEMENT INDICATES POTENTIAL PERSONNEL HAZARD. FAILURE TO COMPLY WITH THESE INSTRUCTIONS MAY RESULT IN PERSONAL INJURY.*

WEBSITE FOR SILICOSIS:

<http://www.osha.gov/Silica/IT69D 1.html>

1-1 INTRODUCTION

1-2 PURPOSE AND SCOPE

This publication contains operation and maintenance instructions, with illustrated parts breakdown, for the BLAST-IT-ALL® ABC Abrasive Dry Blast Cabinet, manufactured by BLAST-IT-ALL®, Inc., Salisbury, NC.

1-3 GENERAL INFORMATION

This machine is designed primarily for the cleaning and peening process with heavy media; For shot peening or when cutting action is required. The gun pressure and media is determined by the application. Additionally, the blast cleaning and peening machine has following applications:

- A. Increase tensile strength and relieve stress by microscopic bombardment.
- B. Remove burrs following machining or grinding operation, subminiature space age, or large castings.
- C. Products a metallurgical clean surface for plating, painting and other processes.
- D. Increase tool life by blending minute surface imperfections.
- E. Improve releasing characteristics of molds and dies which process glass, rubber, and plastic parts.
- F. Enhance lubrication by imparting a microscopically controlled dimpled surface.
- G. Retain critical dimensions while producing above results.
- H. Reclaim and recondition parts by removing paint, rust, corrosion, etc. This process is also used on rubber, fiberglass, and plastics. The Blast Cleaning and Peening Machine is of the enclosed type. Parts for processing are loaded into the cabinet through doors on the right or left sides of the unit. The operator's hands are inserted into a pair of gloves connected to the unit. The gloves serve both to protect the operator and to retain the media in the enclosure. Observation of the parts in process is through a glass window in the cabinet front. The unit contains a sealed, two tube, fluorescent light which illuminates the work area when electric power is on.

The media for abrasive blast cleaning or bead peening is propelled by externally supplied air pressure. The air pressure is routed through a moisture separator, pressure regulator, and control valves to the blast nozzle.

1-8 COMPRESSED AIR REQUIREMENTS

Table #1-1

<u>Orifice</u>	<u>CFM Volume</u>	<u>PSIG</u>
No. 4	80	80
No. 5	120	80

EQUIPMENT DESCRIPTION AND FUNCTIONS

BLAST GENERATOR

The 100-lb. capacity, 1.0 cubic foot blast generator, or pressure pot is ASME coded and should not be field modified. It's semi-automatic controls' function in response to the foot treadle. When the foot valve is depressed, the pot is pressurized with supply air to allow blasting. When the foot treadle is released, air supply to the blast generator is shut off. This allows the pot to discharge; thus depressurizing the pot and allowing a new charge of media to enter the vessel.

EQUIPMENT DIMENSIONS & CONFIGURATIONS

GENERAL:

The individually mounted components of the installation are as follows:

60 x 36	Pressure Machine	60"	x	36"
60 x 48	Pressure Machine	60"	x	48"

The orientation of the components may be varied to suit individual sites; however, a suggested orientation is shown in Figure 1.

After unloading the shipping module, the individual pieces comprising the project will be somewhat apparent when they are compared to the figures in this manual.

TROUBLE SHOOTING

MACHINE:

1. The media and debris are not conveyed through the screen drawer to the pressure tank.
 - A. Screen drawer blocked

2. Failure to accumulate media in reservoir above blast generator
 - A. Excessive carry-over into dust collector. Adjust on dust collector.
 - B. Trash screen below hopper blocked.
 - C. Moisture or oil in lines has contaminated media, and media will not flow.

3. Air blast but no media flow.
 - A. Pot is empty.
 - B. Media is wet and will not flow.
 - C. Media metering valve is plugged or closed.

4. Reduced pressure at nozzle, with or without media flow.
 - A. Insufficient air compressor
 - B. Media flow valve open too far.
 - C. Pop-up valve in pressure pot not sealing.
 - D. Poor sealing in blow-down valve.
 - E. Choke valve closed too far.
 - F. Inspect air hose connection and fittings for leaks.
 - G. Check air filter for water accumulation and foreign material
Build up on filter.

WARNING

DO NOT WELD ON BLAST MACHINE. THIS VOIDS NATIONAL BOARD APPROVAL AND CERTIFICATION.

FAULT ISOLATION

Symptom	Probable Cause	Solution
Fogging Cabinet	<ol style="list-style-type: none"> 1. Dirty Dust Bag. 2. Fan Rotation wrong. 	Clean or Replace Bag Check
Abnormal Media Consumption	<ol style="list-style-type: none"> 1. Improper Exhaust hook-up. 	Check connection Between dust separator And dust bag.
Reduction of Cleaning	<ol style="list-style-type: none"> 1. Low media level. 2. Reduced Air Pressure. 3. Media Hose Clogged. 4. Dirty exhaust bag. 5. Wet media 6. Worn blast nozzle. 	Fill as required Check Air System Pressure. Inspect hose for work places or soft spots. Clean or replace bags. Purge system and refill. Inspect and replace or adjust as required.

SAFETY SUMMARY

The following are general safety precautions that personnel must understand and apply during the operation and maintenance to ensure personnel safety and health. Portions of this information may be included in certain sections of this manual for emphasis. Specific precautions may be included in the text potentially hazardous operations in the form of warning or caution statements.

KEEP AWAY FROM LIVE CIRCUITS.

Operating personnel must at all times observe safety regulations. Do not replace components with the voltage supply turned on. To avoid injuries, always remove power and ground a circuit before touching it.

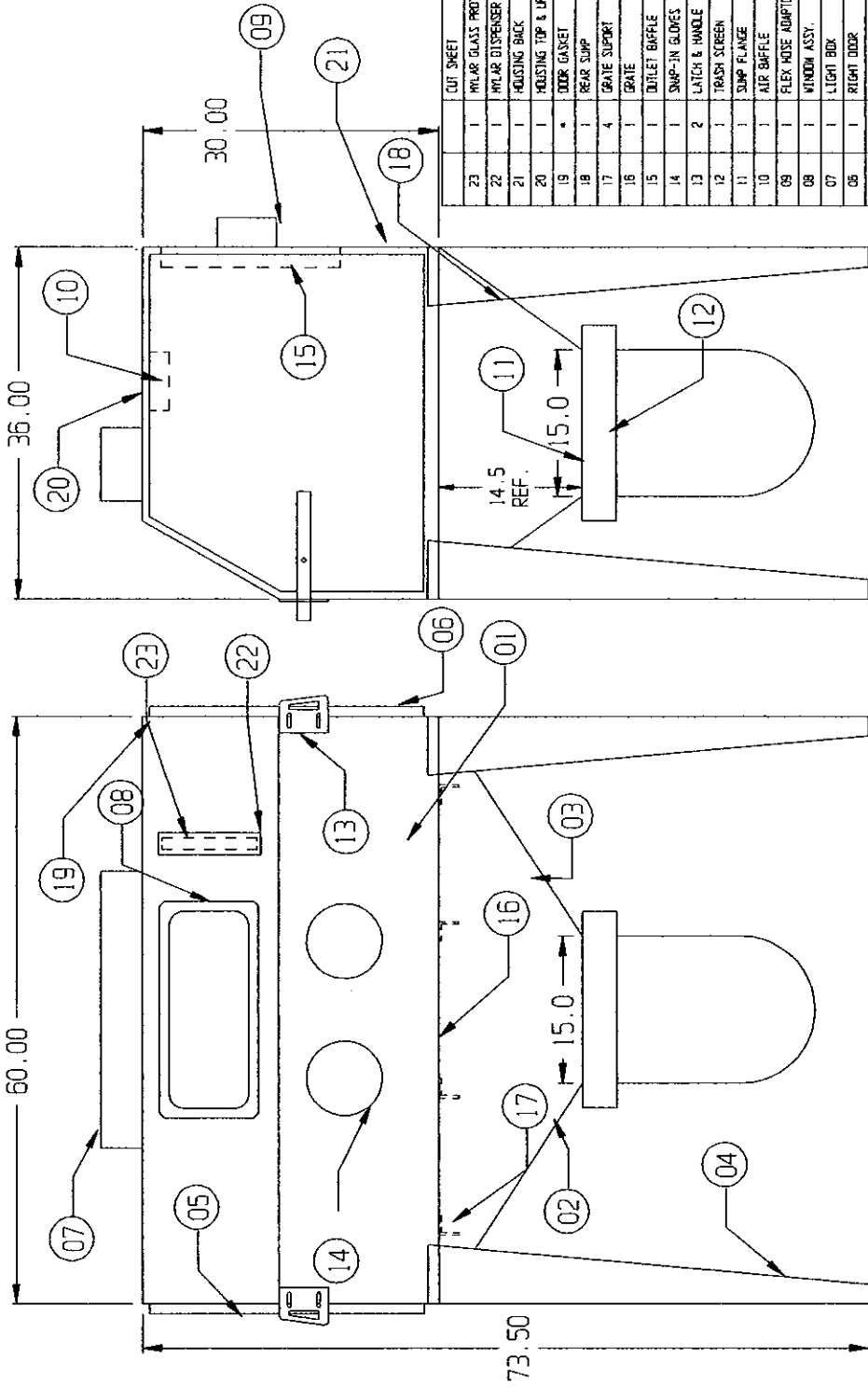
DO NOT WEAR JEWELRY.

Remove rings, watches, and other metallic objects that may cause shock or burn hazards.

DO NOT SERVICE OR ADJUST ALONE.

Do not attempt internal service or adjustment unless another person capable of rendering aid and resuscitation is present.

B259-M



* SPECIFY LENGTH

ITEM NO.	QTY.	DESCRIPTION	ONE IN. / MATERIAL
23	1	CUT SHEET	A798
22	1	MILAR GLASS PROTECTOR	01191
21	1	MILAR DISPENSER	01160
20	1	HOUSING BACK	A790
19	1	HOUSING TOP & UPPER FRONT	A799
18	1	DOOR GASKET	24-025
17	1	REAR SUMP	A787
16	4	GRATE SUPPORT	A126-13
15	1	GRATE	A126-15
14	1	SNAP-IN GLOVES	A754
13	2	LATCH & HANDLE	REFER TO A799
12	1	TRASH SCREEN	A453
11	1	SUMP FLANGE	A267
10	1	AIR BAFFLE	A247
09	1	FLEX HOSE ADAPTOR	A453
08	1	WINDOW ASSY.	A12755
07	1	LIGHT BOX	A311
06	1	RIGHT DOOR	B169
05	1	LEFT DOOR	A792-02
04	4	LEG	A792-01
03	1	RIGHT SUMP	A791
02	1	LEFT SUMP	A786-02
01	1	HOUSING LOWER FRONT	A786-01
00	1	HOUSING UPPER FRONT	A788

LARRY HESS & ASSOCIATES, INC.
SALISBURY, NORTH CAROLINA

DESCRIPTION: 6036-P MATERIAL:

DATE: DEC 10/26/05 1" = 1" STD. REV. 01

DRAWING NO.: B259-M

CONFIDENTIAL

THE DISCLOSURES AND CONTENTS OF THIS DRAWING ARE CONFIDENTIAL AND ARE THE EXCLUSIVE PROPERTY OF BLAST-IT-ALL® A DIV. OF LARRY HESS & ASSOCIATES, INC. THIS DRAWING IS NOT TO BE COPIED OR REPRODUCED WHOLLY OR IN PART WITHOUT WRITTEN PERMISSION OF LARRY HESS & ASSOCIATES, INC.

REV.	DESCRIPTION	BY	DATE

LARRY HESS & ASSOCIATES

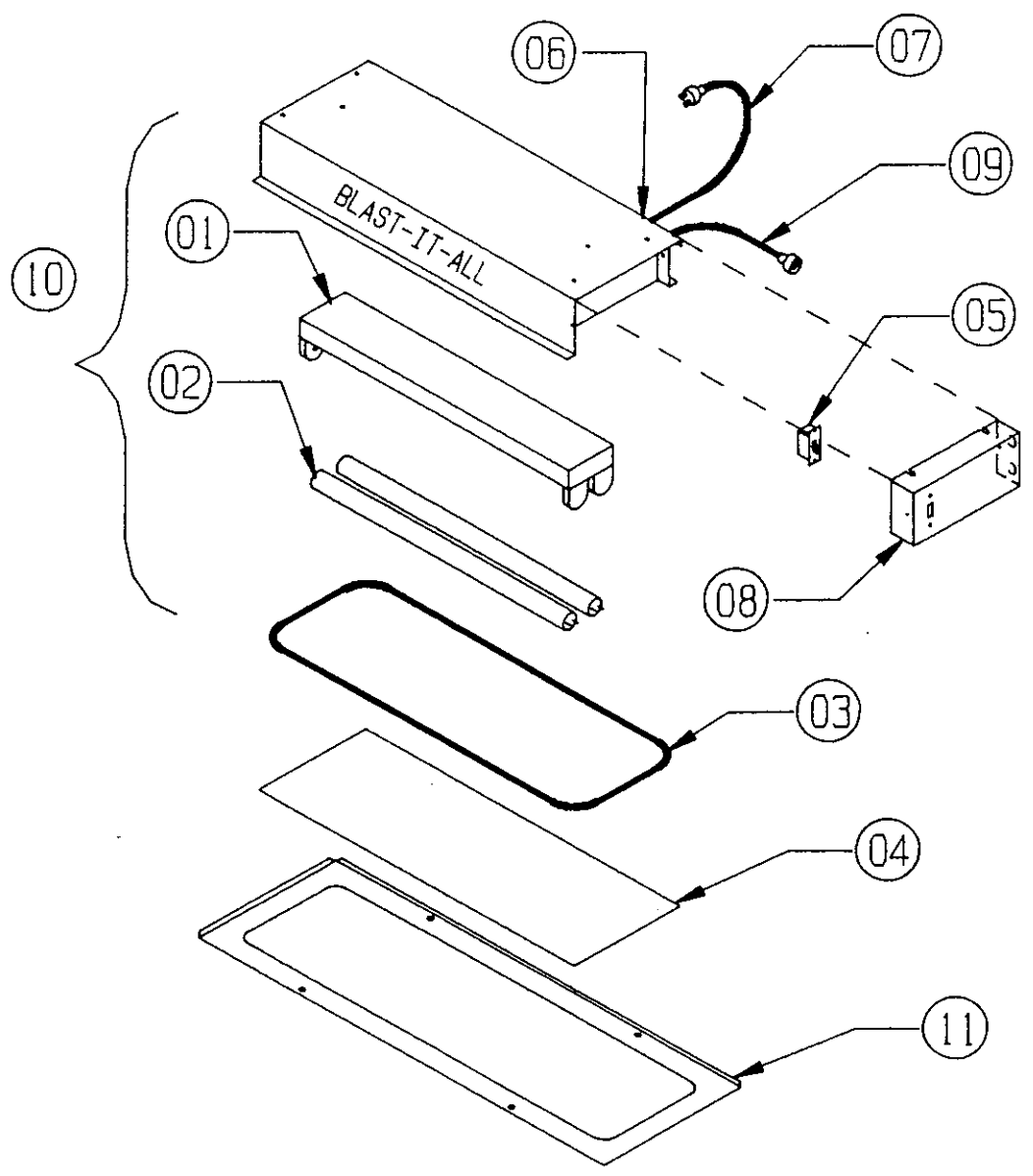
DESCRIPTION

BIA LIGHT BOX

DATE 4/23/96

ENGINEER DEC

DWG. NO. MI29



ITEM NO.	PART NO.	DESCRIPTION
1	13-533	FLUORESCENT FIXTURE, (NO TUBES)
2	13-534	24" FLUORESCENT TUBE
3	23-058-G	PROTECTOR, LIGHT
4	23-059	GASKET
5	13-655	SWITCH
6	13-605	HEYCO CONNECTOR
7	13-550	POWER CORD, 3 WIRE
8	CONT. FACT.	SWITCH MOUNTING PLATE
9	010172	CORD WITH FEMALE PLUG
10	CONT. FACT.	COMPLETE LIGHT BOX (EXCEPT 3 & 4)
11	A506	LIGHT BOX WINDOW FRAME

LARRY HESS & ASSOCIATES

DESCRIPTION

STANDARD MACHINE REPLACEMENT PARTS

DATE

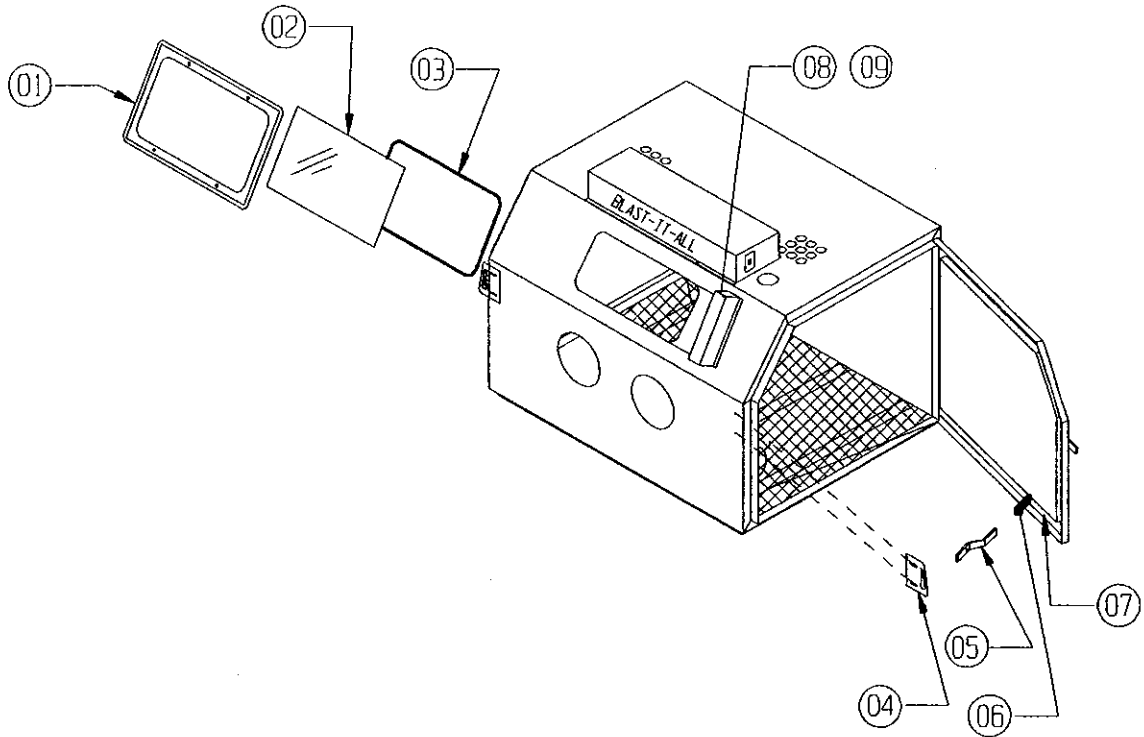
05/09/06

ENGINEER

DEC

DMG. NO.

M157



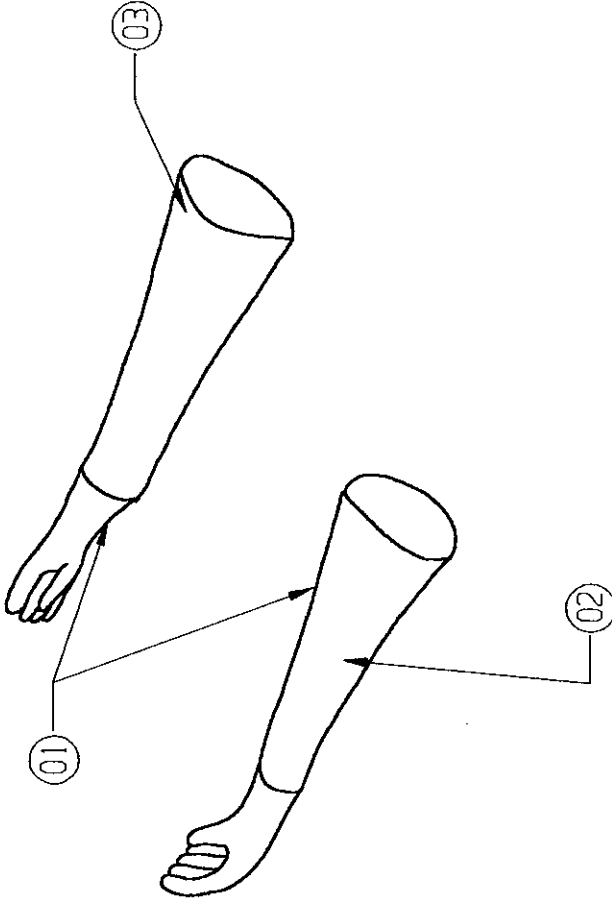
ITEM NO.	PART NO.	DESCRIPTION
1	23-053	WINDOW FRAME
2	23-050	WINDOW, VIEWING
3	24-059	WINDOW GASKET (SPECIFY LENGTH)
4	15-730	DOOR STRIKER (EITHER SIDE)
5	15-719	DOOR CAM (EITHER SIDE)
6	15-720	DOOR CAM RUBBER GRIP
7	-----	DOOR GASKET (REFER TO CHART #1)
8	011191	MYLAR GLASS PROTECTOR
9	011190	MYLAR HOLDER

CHART #1

MACHINE MODEL	DOOR GASKET NO.
3636	24-025-12'
4426	24-025-9'
4836	24-025-13'
4848	24-025-15'
6036	24-025-13'
6048	24-025-16'
6060	24-025-18'

* EACH DOOR

A799



03	1	RIGHT GLOVE	22-112
02	1	LEFT GLOVE	22-111
01	1	PAIR SNAP-IN GLOVES	22-110
ITEM NO.	QTY.	DESCRIPTION	DWG. NO. / MATERIAL

LARRY HESS & ASSOCIATES, INC.
SALISBURY, NORTH CAROLINA

DESCRIPTION: SNAP-IN GLOVES MATERIAL:

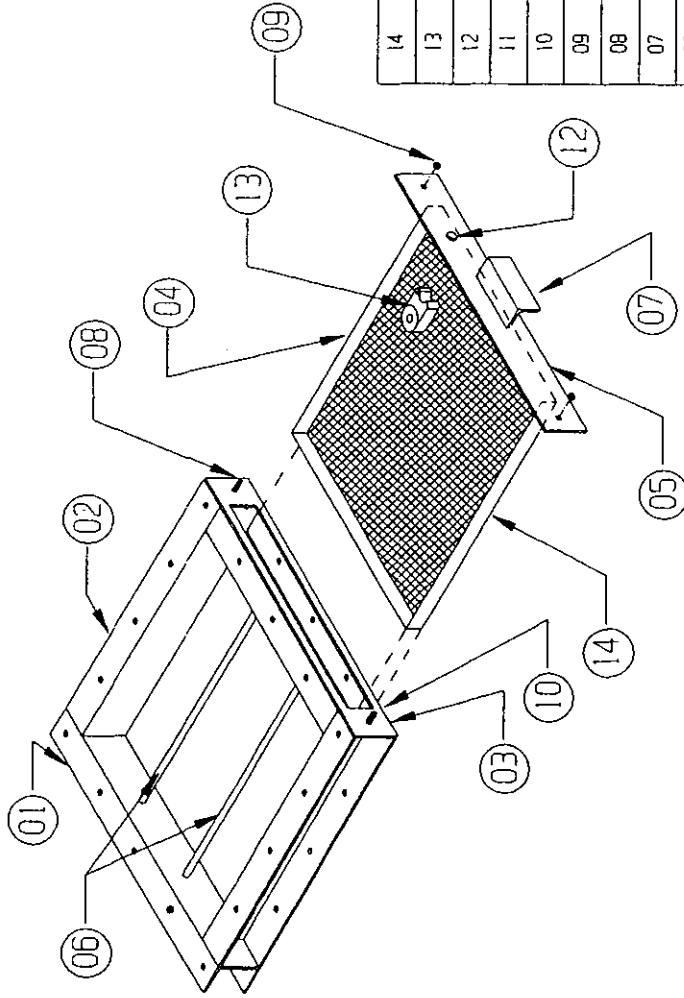
DATE:	08/17/88	SCALE:	1/16" = 1"	JOB NO.:	STO.
CHK'D BY:		FRAC'TIONS:	DECIMAL	ANGULAR:	

DRAWING NO.: A799

REV.	DESCRIPTION	BY	DATE

CONFIDENTIAL

THE DISCLOSURES AND CONTENTS OF THIS DRAWING ARE CONFIDENTIAL AND ARE THE EXCLUSIVE PROPERTY OF BLAST-IT-ALL, A DIV. OF LARRY HESS & ASSOCIATES, INC.. THIS DRAWING IS NOT TO BE COPIED OR REPRODUCED WHOLLY OR IN PART WITHOUT WRITTEN PERMISSION OF LARRY HESS & ASSOCIATES, INC..



ITEM NO.	QTY.	DESCRIPTION	DWG. NO. / MATERIAL
14	1	REPLACEMENT DRAWER	010581
13	1	VIBRATOR (OPTIONAL)	16-919
12	1	1/4" COUPLER	14-525
11		CUT SHEET	A271
10	3 FT.	1/8" x 3/4" GASKET	24-021
09	2	1/4" WING NUT	30-510
08	2	1/4" SELF TAPPER x 3/4" LONG	30-112
07	1	DRAWER HANDLE	A269-02
06	2	SUPPORT RODS	A268-03
05	1	DRAWER FRONT	A270-02
04	1	DRAWER SCREEN	A270-01
03	1	FRONT PANEL	A269-01
02	1	BACK PANEL	A268-02
01	2	SIDE PANEL	A268-01
		DESCRIPTION	DWG. NO. / MATERIAL

LARRY HESS & ASSOCIATES, INC.
SALISBURY NORTH CAROLINA

DESCRIPTION: TRASH SCREEN ASM.
010580

MATERIAL:

DATE	SCALE	JOB NO.
1/19/64	3/32" = 1"	STO.
DATE	PERIODICAL	NEXT ASSY.

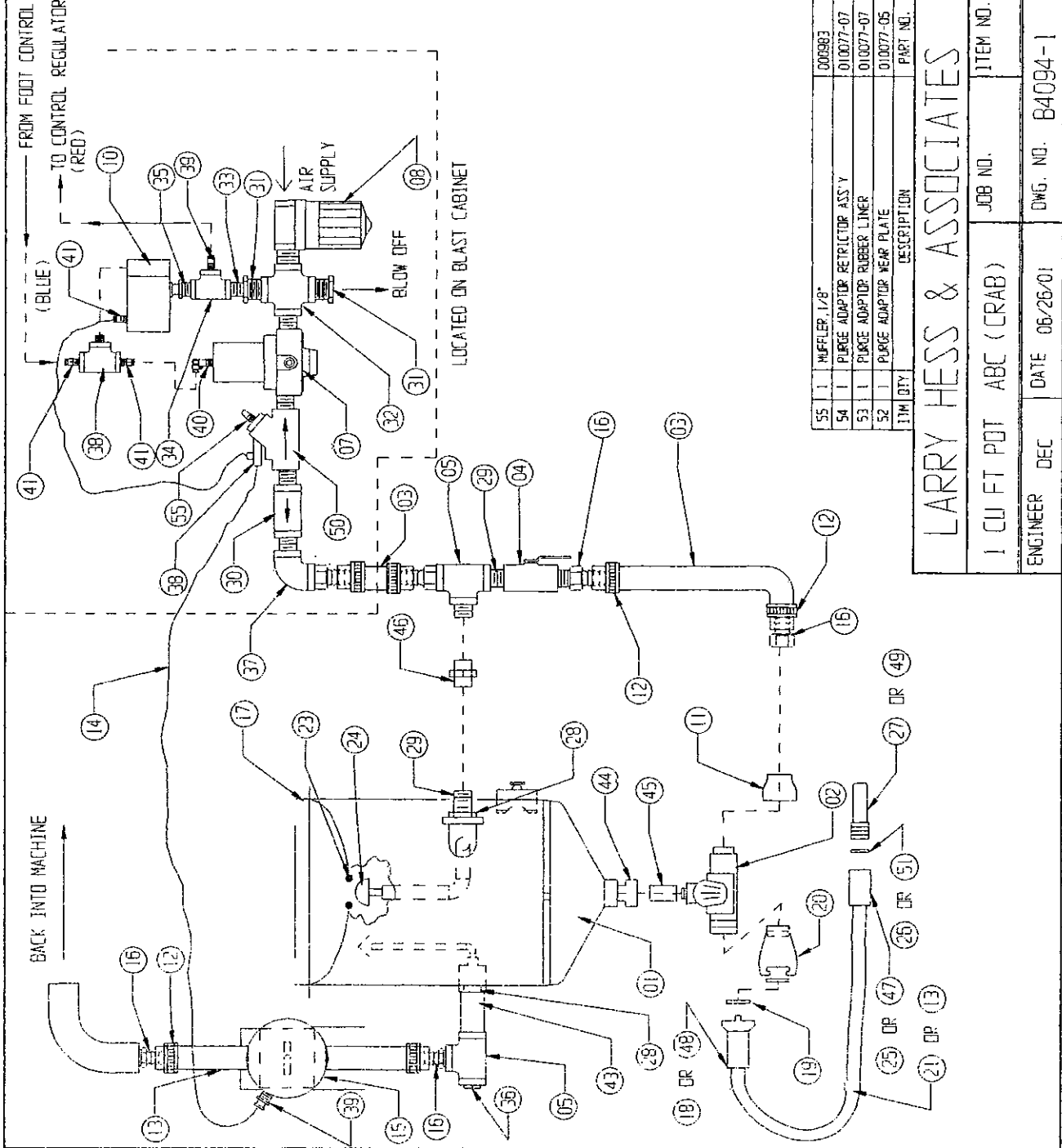
DRAWING NO.: A267

CONFIDENTIAL

THE DISCLOSURES AND CONTENTS OF THIS DRAWING ARE CONFIDENTIAL AND ARE THE EXCLUSIVE PROPERTY OF BLAST-IT-ALL (tn) A DIV. OF LARRY HESS & ASSOCIATES, INC. THIS DRAWING IS NOT TO BE COPIED OR REPRODUCED WHOLLY OR IN PART WITHOUT WRITTEN PERMISSION OF LARRY HESS & ASSOCIATES, INC.

REV.	DESCRIPTION	BY	DATE
1	CONVERT TO CAD	L.J.F.	02/18/98

51	1	WASHER, NEW 1" 10 x 1-1/2	14-113
50	1	VALVE, AIR 3/4"	14-157
49	1	NOZZLE, 1-1/4" THREADS	20-622
48	1	QUICK CONNECT COUPLING 3/4" HOSE	14-102
47	1	HOLDER, HOLDER 1-1/4" THREADS	14-105
46	1	UNION, 3/4"	14-321
45	1	NIPPLE, 1-1/4" CLOSE	14-350
44	1	BUSHING, 2" x 1-1/4"	14-528
43	1	NIPPLE, 3/4" x 3" LG.	14-520
42	1	NIPPLE, 1/8" CLOSE	001151
41	3	FITTING, STRAIGHT CONNECTOR 1/8" x 1/4"	16-951
40	1	FITTING, 90° ELBOW CONNECTOR 1/4" x 1/4"	003083
38	2	FITTING, STRAIGHT CONNECTOR 1/4" x 1/4"	004623
37	1	TEE, 1/8" BRASS	14-326
36	1	STREET ELB., 3/4"	14-466
35	1	PLUG, 3/4"	000835
34	1	BUSHING, 1/4" x 1/8"	14-289
33	1	TEE, 1/4" BRASS	14-329
32	1	NIPPLE, 1/4" CLOSE	14-320
31	2	CROSS, 3/4"	14-516
30	1	BUSHING, 3/4" x 1/4"	14-996
29	7	VALVE, CHECK IN-LINE	055271
28	2	NIPPLE, CLOSE 3/4"	14-341
27	1	BUSHING, 1" x 3/4"	14-371
26	1	NOZZLE, 1/4"	20-602
25	1	WASHER, NEW 1/2" 10 x 1-1/8"	14-114
24	1	HOLDER, NOZZLE 3/4" THREADS	14-108
23	1	VALVE, POP-UP	16-706
22	1	SEAL, POP-UP	16-707
21	*	FURGE ADAPTOR	010077
20	1	HOSE, BLAST 1/2" 10 x 1-1/8 DD	18-100
19	2	TANK CONNECT 1-1/4 FPT 2 PRONG AL	14-117
18	1	WASHER, OC & TC	14-107
17	1	BULK CONNECT DD 2 PRONG, AL	14-101
16	4	SCREEN DRAINER ASMB.	010580
15	4	3/4" K.C. NIPPLE	002834
14	*	PUNCH VALVE ASMB.	18-1015
13	*	TUBING 1/4" OD VINYL	18-111
12	4	HOSE, BLAST 3/4" 10 X 1-1/2" DD (31-1/2" LG.)	18-101
11	1	CLAMP	21-031
10	1	BELL REDUCER 1 1/2 X 3/4	006227
09	1	VALVE 3-FORT AIR/SPRING	16-632
08	1	INLET ADAPTOR 5"	11-905
07	1	AIR FILTER 3/4" FPT	16-807
06	1	REGULATOR, PILOT OPERATED 3/4" FPT	16-886
05	2	INLET ADAPTOR 6"	A12767
04	1	TEE 3/4" 150# MI	14-508
03	*	VALVE, BALL 3/4"	14-464
02	1	HOSE, AIP 3/4" I.D.	18-080
01	1	MICRO VALVE	16-878
		PRESSURE POT 1 CU FT.	16-935
ITEM QTY		DESCRIPTION	PART NO.



55	1	MUFFLER, 1/8"	000983
54	1	FURGE ADAPTOR RETRICTOR ASS Y	010077-07
53	1	FURGE ADAPTOR RUBBER LINER	010077-07
52	1	FURGE ADAPTOR YEAR PLATE	010077-05
ITEM QTY		DESCRIPTION	PART NO.

LARRY HESS & ASSOCIATES

1 CU FT PDT ABC (CRAB)

ENGINEER DEC DATE 06/26/01 DWG. NO. B4094-1

JOB NO. ITEM NO.

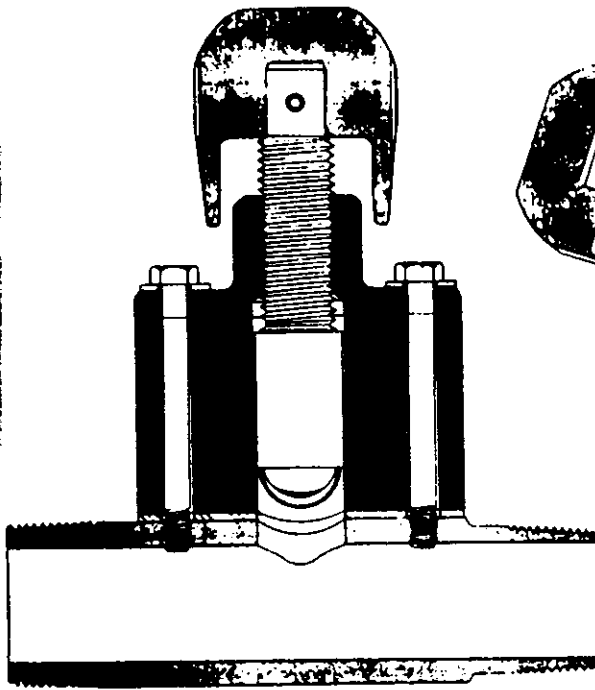
MICRO VALVE

DRAWN BY REH

DATE 5-29-85

DRAWING NO.

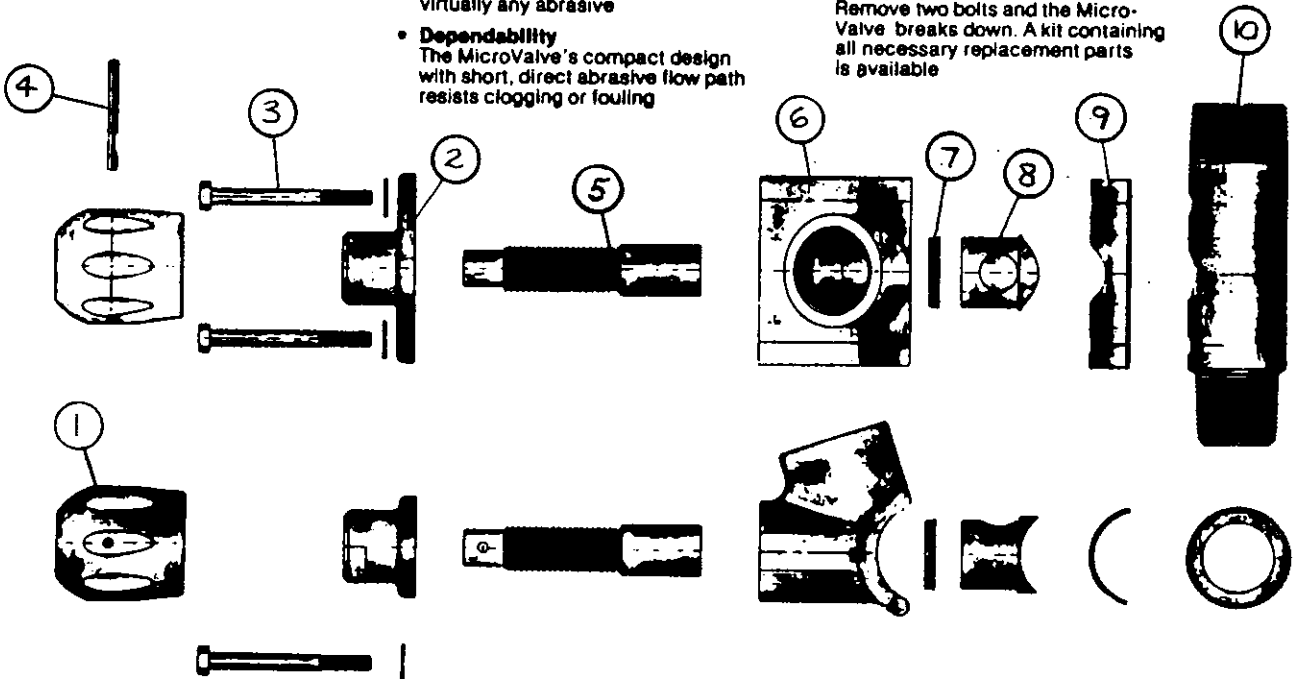
A4017



BLAST-IT-ALL'S MicroValve is the ultimate in control, flexibility, dependability, and durability in abrasive metering. With a simplified design the MicroValve yields the best performance and longest life of any metering device.

- **Control**
The MicroValve gives precise, accurate abrasive metering through infinitely adjustable control
- **Flexibility**
The MicroValve controls the flow of virtually any abrasive
- **Dependability**
The MicroValve's compact design with short, direct abrasive flow path resists clogging or fouling

- **Durability**
The MicroValve features a tough anodized aluminum body as well as a hardened 17.4 ph stainless steel plunger and sleeve for long life
- **Easily repairable**
Remove two bolts and the MicroValve breaks down. A kit containing all necessary replacement parts is available



ITEM	DESCRIPTION	PART #	ITEM	DESCRIPTION	PART #
1	KNOB	20-202	6	BODY	20-207
2	CAP	20-203	7	SEAL	20-208
3	BOLT	20-204	8	SLEEVE	20-209
4	ROLL PIN	20-205	9	GASKET	20-210
5	PLUNGER	20-206	10	NIPPLE, INLET	20-211

ENG. NO. M7024

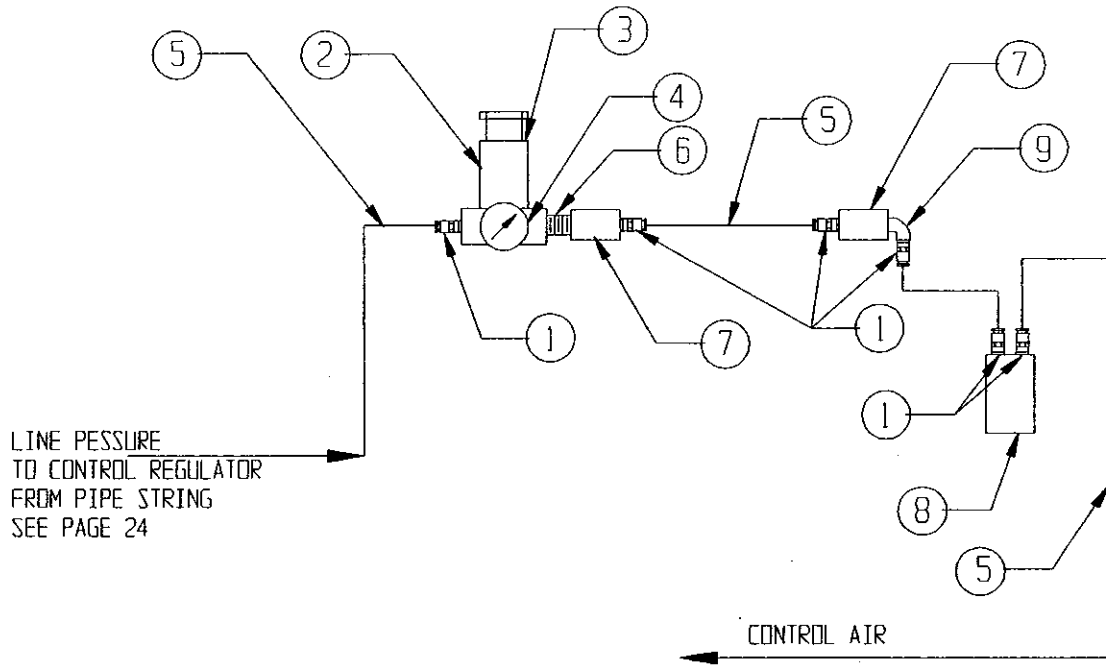
ENGINEER DEC

DATE 5/01/96

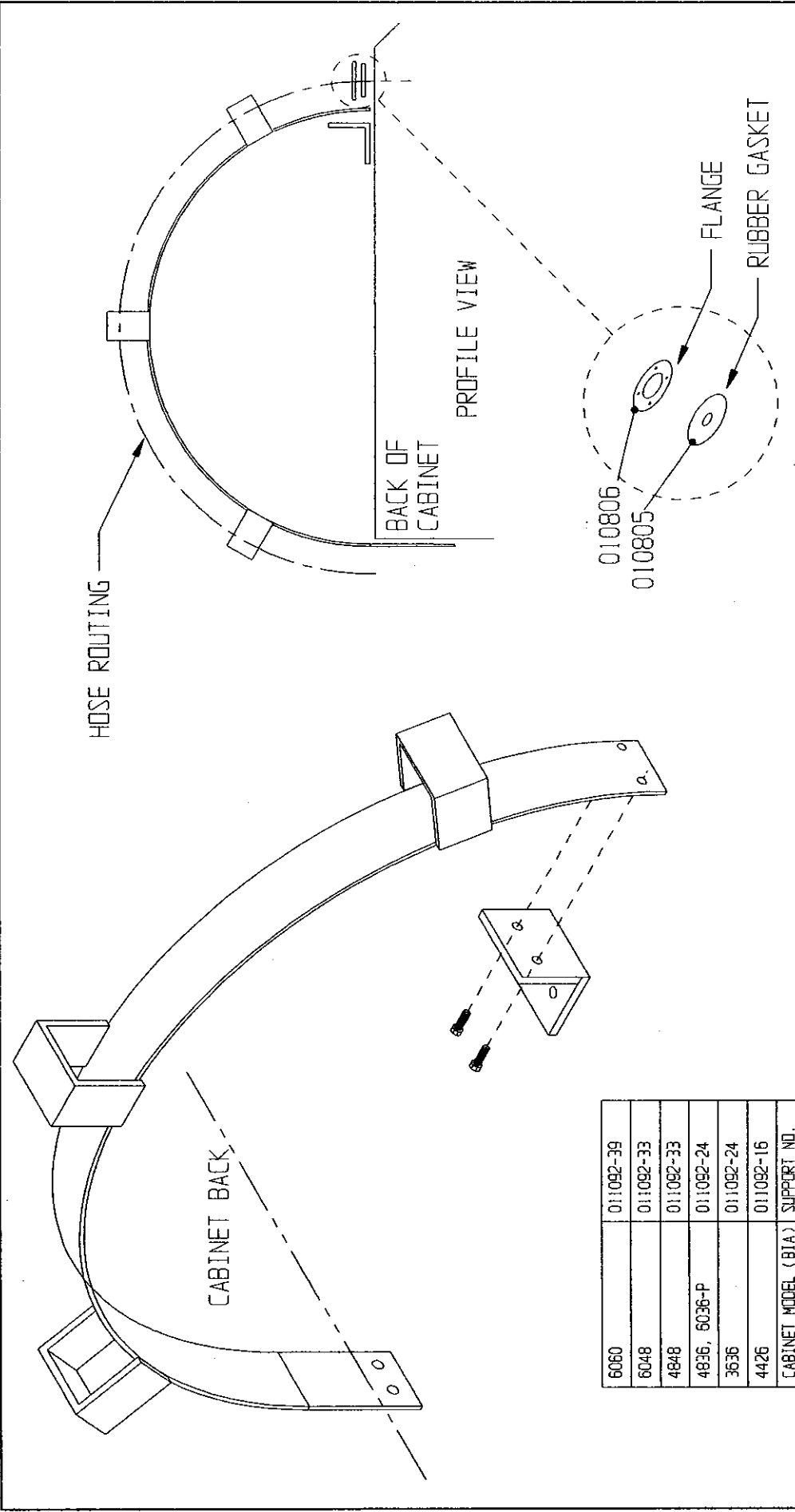
DESCRIPTION PRESSURE AIR CONTROL

DESCRIPTION

LARRY HESS & ASSOCIATES



ITEM NO.	PART NO.	QTY.	DESCRIPTION
1	16-951	7	FITTING 1/4" TUBE x 1/8" NPT
2	001564	1	REGULATOR, 1/8"
3	001564-N	1	NUT FOR REGULATOR
4	16-820	1	GAUGE, 1/8" BACK
5	18-111	*	TUBING 1/4", O.D, VINYL
6	002405	1	CLOSE NIPPLE, 1/8"
7	010600	2	VALVE. AIR 1/8" 3-WAY (SAFETY DOOR)
8	003190	1	VALVE. AIR (FOOT CONTROL)
9	001129	1	1/8" STREET ELL



LARRY HESS & ASSOCIATES, INC.
SALISBURY NORTH CAROLINA

DESCRIPTION: BLAST HOSE TOP SUPPORT ASSEMBLY

MATERIAL:

DATE:	01/02/06	SCALE:	N. T. S.	JOB NO.:	STD.
DATE:	DEC	DATE:	DEC	DATE:	DEC
DATE:		DATE:		DATE:	

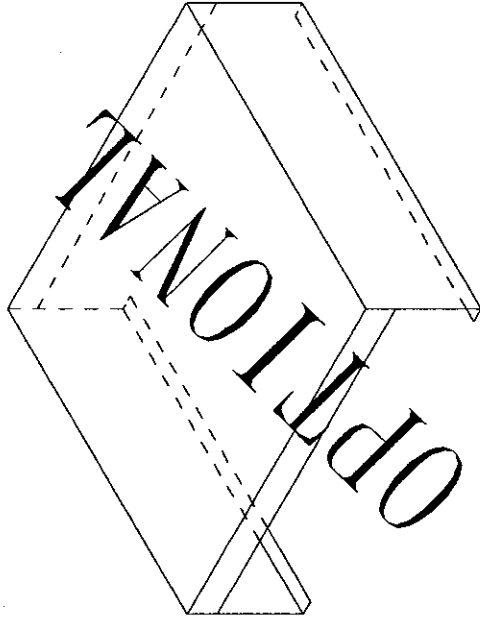
DRAWING NO.: A698-MBIA

CONFIDENTIAL

THE DISCLOSURES AND CONTENTS OF THIS DRAWING ARE CONFIDENTIAL AND ARE THE EXCLUSIVE PROPERTY OF BLAST-IT-ALL® A DIV. OF LARRY HESS & ASSOCIATES, INC. THIS DRAWING IS NOT TO BE COPIED OR REPRODUCED WHOLLY OR IN PART WITHOUT WRITTEN PERMISSION OF LARRY HESS & ASSOCIATES, INC.

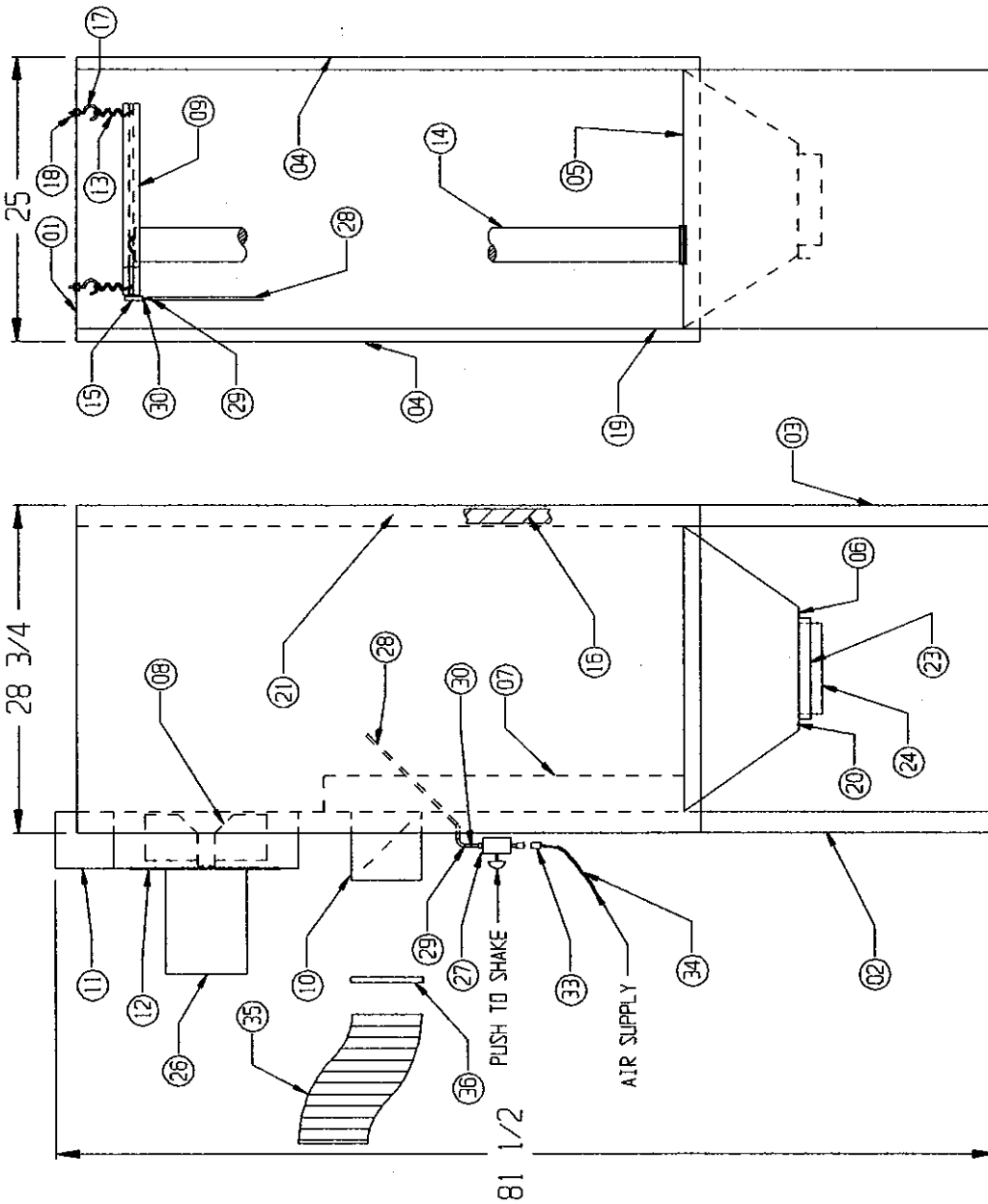
REV.	DESCRIPTION	BY	DATE

A807



<p>CONFIDENTIAL</p> <p>THE DISCLOSURES AND CONTENTS OF THIS DRAWING ARE CONFIDENTIAL AND ARE THE EXCLUSIVE PROPERTY OF BLAST-IT-ALL® A DIV. OF LARRY HESS & ASSOCIATES, INC. THIS DRAWING IS NOT TO BE COPIED OR REPRODUCED WHOLLY OR IN PART WITHOUT WRITTEN PERMISSION OF LARRY HESS & ASSOCIATES, INC.</p>		<p>LARRY HESS & ASSOCIATES, INC. SALISBURY, NORTH CAROLINA</p>	
<p>DESCRIPTION: 6036-P PLATFORM</p>		<p>MATERIAL: 12 GA. x 28 x 41 1/2</p>	
<p>DATE: 05/03/06</p>	<p>SCALE: 3/32" = 1"</p>	<p>JOB NO.</p>	<p>DRAWING NO.: A807</p>
<p>DATE:</p>	<p>FRACTIONAL: DECIMAL: ANGULAR:</p>	<p>REF. ASS'Y:</p>	
<p>REV.</p>	<p>DESCRIPTION</p>	<p>BY</p>	<p>DATE</p>

B2129



38				
37				
36	2	SCREW CLAMP		21-036
35	5'	FLEX HOSE (6")		19-096
34	6'	1/4" PLASTIC HOSE		18-111
33	1	MALE CONNECTOR		16-951
32				
31				
30	2	1/8" x 1/4" HOSE BARB		14-316
29	2	1/4" SCREW CLAMPS		000496
28	3'	1/4" AIR HOSE		18-074
27	1	SHAKER VALVE 1/8"		16-830
26	1	MOTOR 1HP-110V 56C		13-700
25				
24	1	OUTLET FLANGE 8" DIA.		000725
23	1	SLIDE GATE		000324
22				
21	5	1/4" WING NUT		000305
20	80	1/4" x 3/4" LG. ROLLER		000301
19	12	1/4" x 1" LG. ROLLER		000377
18	8	3/16" HEX NUT		000378
17	4	3/16" EYE BOLT		000379
16	50'	1/2" x 1" GASKET		24-054
15	1	SHAKER		16-919
14	25	DUST BAG		11-349
13	4	SPRING		15-721
12	1	BLOWER/MOTOR PLATE		11-720
11	1	BLOWER HOUSING ASS'Y.		11-716
10	1	INLET DAMPER ASS'Y. (6" DIA.)		000723
09	1	DUST BAG MOUNT ASS'Y.		A2501
08	1	BLADE ASS'Y.		11-718
07	1	D-10 PLENUM ASS'Y.		000335
06	1	SPACER		000329
05	1	SUMP ASS'Y.		A2500
04	2	DOOR PANEL		A2486
03	1	RIGHT SIDE PANEL		A2485-1
02	1	LEFT SIDE PANEL		A2484-1
01	1	TOP PLATE		A2487-1

ITEM NO.	QTY.	DESCRIPTION	DMG. NO./ MATERIAL
<p>LARRY HESS & ASSOCIATES, INC. SALISBURY, NORTH CAROLINA</p>			
DESCRIPTION:		700 CFM	MATERIAL:
D-10 DUST COLLECTOR ASS'Y.			PER DWG.
DATE:	3/27/71	SCALE:	AS SHOWN
BY:	WJ	CHKD:	WJ
REV. NO.	02/0/95	REV. DATE:	
REV. BY:		REV. DATE:	
REV. NO.		REV. DATE:	
REV. BY:		REV. DATE:	
REV. NO.		REV. DATE:	
REV. BY:		REV. DATE:	

B2129

LARRY HESS & ASSOCIATES

DESCRIPTION

120 V/ 1 PHASE ELECTRICAL SCHEMATIC

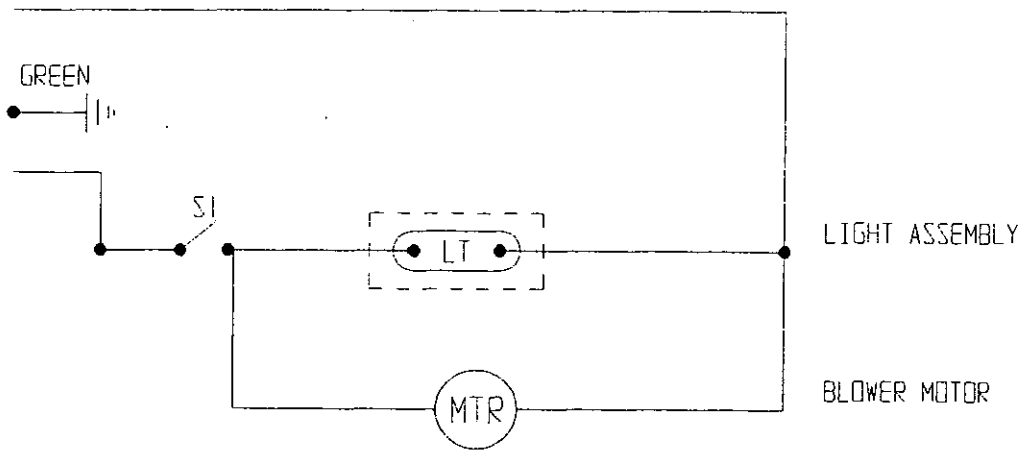
DATE 4/23/96

ENGINEER DEC

DWG. NO. A5107

120 VOLT SINGLE PHASE WIRING

WHITE (NEUTRAL)



SWITCH NO.	FUNCTION	PART NO.
SW1	MACHINE LIGHT - OFF/ ON	13-510
LT	LIGHT FIXTURE	13-533
MTR	MOTOR (1 HP SINGLE PHASE)	13-700

DWG. NO.

B5102-M

ENGINEER

DEC

DATE

4/23/96

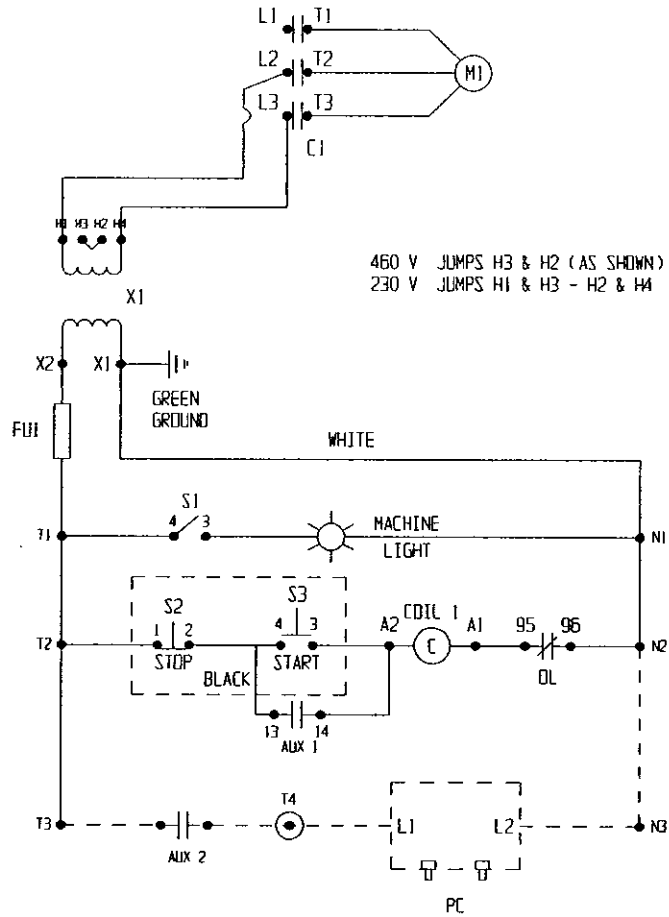
DESCRIPTION

208-230/460 3 PHASE ELECTRICAL SCHEMATIC

LARRY HESS & ASSOCIATES

REV. 03/02/05 BY DEC

208 / 230 / 460 VOLTS
3 PHASE



SWITCH NO.	FUNCTION	PART NO.
S1	MACHINE LIGHT - OFF/ ON	13-655
S2	M1 (PUSH TO STOP)	
S3	M1 (PUSH TO START) STARTS M1	
X1	TRANSFORMER (250 VA 2 LIGHTS)	000117
X1	TRANSFORMER (150 VA 1 LIGHT)	010222
FU1	FUSE	13-101-5A
FH	FUSE HOLDER	13-101
C1	CONTACTOR	010210-S
OL	OVERLOAD (230 V) 2 HP	010223-S
OL	OVERLOAD (460 V) 2 HP	010211-S
M1	MOTOR (2 HP) 3 PH	13-900
OL	OVERLOAD (230 V) 1HP	010211-S
OL	OVERLOAD (460 V) 1 HP	011795
M1	MOTOR (1 HP) 3 PH	13-701
PC	PULSE CONTROL BOARD (RPJ ONLY)	010453
AUX 1	AUXILLARY CONTACT (2 NO)	011720

WARRANTY

Larry Hess & Associates, Inc. Warrants to the original purchaser the merchandise sold to be free from defects in material and workmanship under normal use and service for a period of one (1) year. Upon prompt notification by the buyer, to LHA, components that are determined by LHA to be defective will be repaired or replaced at no additional charge, F.O.B. our factory.

Manufacturer shall have the right to inspect prior to replacing all merchandise in question.

This warranty does not apply to parts that are directly involved in the blasting operation. Example: gun, gun parts, viewing window, hose, gloves, etc.

Manufacturer shall not be required to pay any removal or installation charges whatsoever under this warranty.

Manufacturer shall not be liable for prospective profits, special or consequential damages, nor shall any recovery of any kind against manufacturer be greater in amount than the cost of repairs of defects in workmanship.

This warranty does not apply to damage caused by accidents, damage in transit, alterations by unauthorized personnel, abuse or damage by flood, fire, or acts of God, nor by artificially generated electric currents or any other cause whatsoever except defects in material or factory workmanship.

In all cases, defective parts must be returned to Larry Hess & Associates, Inc. before credit is issued.

If genuine BLAST-IT-ALL® replacement parts are not used, the warranty is void.

This warranty is in lieu of all other warranties expressed or implied and releases Larry Hess & Associates, Inc. of all other obligations and liabilities whatsoever. This warranty neither assumes nor authorizes any person to assume any obligation other than those specified by this warranty.

WARNING

DO NOT USE *SAND*. SAND WILL CAUSE SILICA DUST, WHICH IS THE CAUSE OF SILICOSIS DISEASE, A CONDITION OF MASSIVE FIBROSIS OF THE LUNGS. *THIS STATEMENT INDICATES POTENTIAL PERSONNEL HAZARD. FAILURE TO COMPLY WITH THESE INSTRUCTIONS MAY RESULT IN PERSONAL INJURY.*

BLAST-IT-ALL®
Larry Hess & Associates, Inc.
Airport Industrial Park
185 Piper Lane
P.O. Box 1615
Salisbury, NC 28145-1615