

CENTRAL PNEUMATIC
3491 MISSION OAKS BLVD.
P.O. BOX 3169
CARMARILLO, CA 93011-3169
MODELS: CP2440 & CP2442OS

WARNING

DO NOT USE *SAND*. SAND WILL CAUSE SILICA DUST, WHICH IS THE CAUSE OF SILICOSIS DISEASE, A CONDITION OF MASSIVE FIBROSIS OF THE LUNGS. *THIS STATEMENT INDICATES POTENTIAL PERSONNEL HAZARD. FAILURE TO COMPLY WITH THESE INSTRUCTIONS MAY RESULT IN PERSONAL INJURY. WEBSITE FOR SILICOSIS:*
http://www.osha-slc.gov/SLTC/silica_advisor/mainpage.html

TABLE OF CONTENTS
MM-362
REVISED JULY 2000

SET-UP INSTRUCTIONS	PAGE
HAND GUN & AIR CONTROLS	1
MODEL: CP2442 (SIDE DOOR MACHINE)	2
MODEL: CP2442OS (TOP OPENING MACHINE)	3-4
OPERATING & SERVICING OF CARTRIDGE DUST COLLECTOR	5-6
OPERATING INSTRUCTIONS	7
OPTIONS, ACCESSORIES, & UPGRADES	8
OPERATING & SET-UP OF 300 RECLAIM WITH DUST BAG	9-10
MAINTENANCE INSTRUCTIONS	11
ILLUSTRATED PARTS BREAKDOWN	
FIGURE	
A. STANDARD CABINET PARTS	12
B. DUST COLLECTOR	13
C. AIR CONTROLS	14
D. HAND GUN	15
E. MEDIA PICK-UP TUBE	16
F. LIGHT BOX AND ELECTRICAL CONTROLS	17
G. ELECTRIC DIAGRAM	18
H. 300 RECLAIM	19

SET-UP INSTRUCTIONS

HAND GUN & AIR CONTROLS. (SEE FIGURE 1)

1. Remove box from machine with Hand Gun and Air Controls.
2. Connect regulator to bracket with lock ring.
3. Connect inlet air hose to left rear leg of machine.
4. Run air hose through machine sump grommet and connect to gun handle.
5. Connect media hose to pick-up tube.

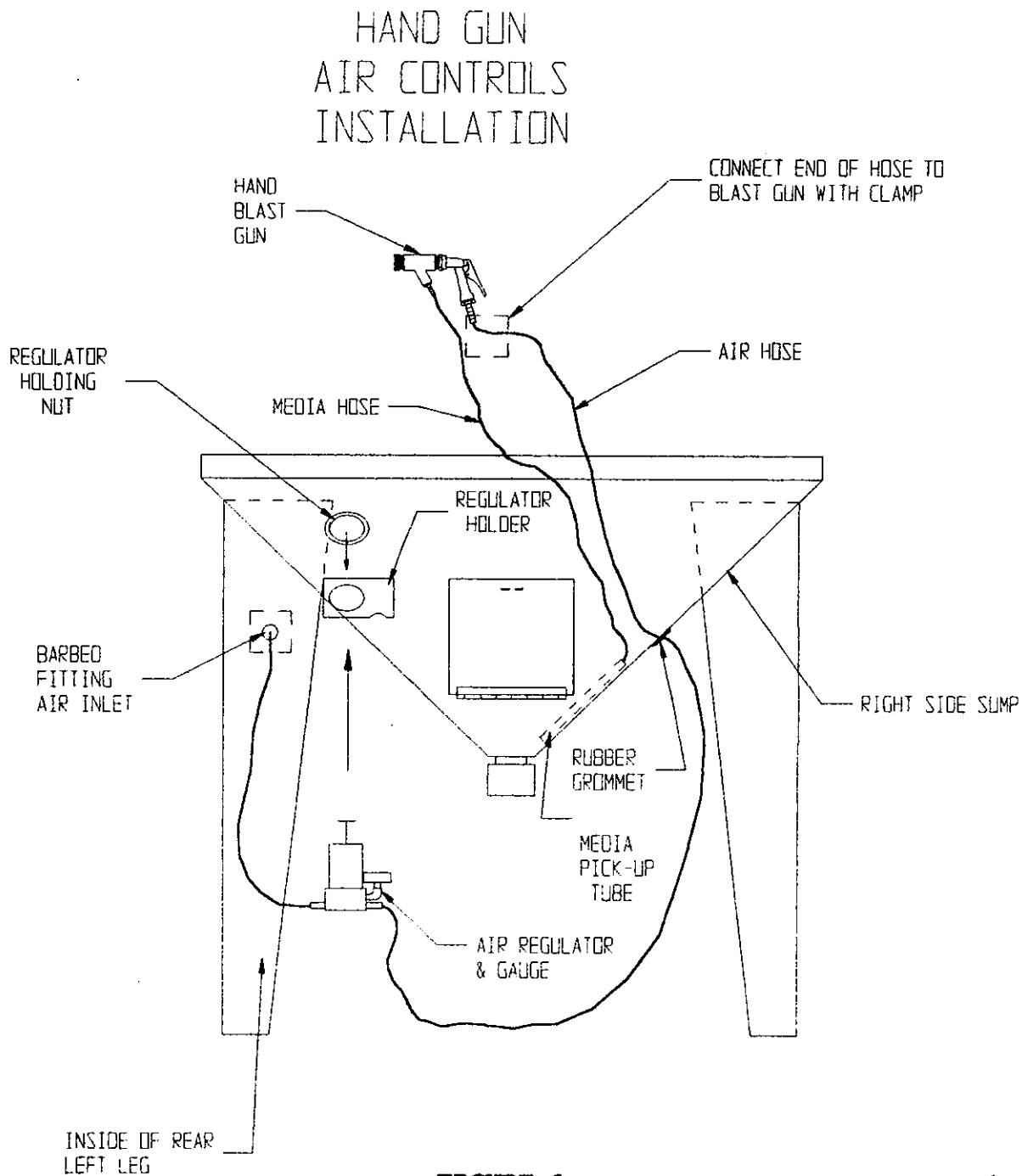


FIGURE 1

*** READ BEFORE OPERATING EQUIPMENT ***

1. Remove all shipping protection: Plastic wrapping, shipping pallet, box's inside, etc. Check for any concealed shipping damage, if discovered, report to damage to your freight carrier immediately.

2. Blast Cabinet should be placed in a desired location, away from any water or liquid environment such as cleaning vats, etc., where the air supply is not restricted and dry. If moist compressed air is present at this location, install a good moisture separator.

3. Installing Cartridge Dust Collector: (Refer To FIGURE 2) Packaged inside machine are bolts, washers, nuts and putty tape.

(Item #1) - Apply putty tape to back of cabinet around large hole, press to make a firm bond to cabinet and squeeze together at seam. (Item #2) - Align the 4 hole bolt pattern and install bolts, washers, and nuts. Tighten bolts and nuts securely to seal around putty tape.

(Item #3) - Plug electrical cord from side of dust collector into plug from light box. (Item #3-A)

4. (READ OPERATION AND SERVICING OF DUST COLLECTOR)
"Page (3)".

5. Connect your air supply line to machine air inlet on left rear leg, Item #4, we recommend using 1/2" minimum supply line. (Again, make sure your air supply line is free from oil and moisture). (If not, install a good moisture separator).
Part #: 16-815

6. Connect electrical cord from light box to grounded electrical source, 110-volt/60 cycle, single phase.

7. Charge blast machine with abrasive. Pour media into cabinet through one of the doors, fill to bottom of screen in sump of cabinet. DO NOT FILL ABOVE BOTTOM EDGE OF CLEAN OUT DOOR. This will cause packing and media will not flow properly.

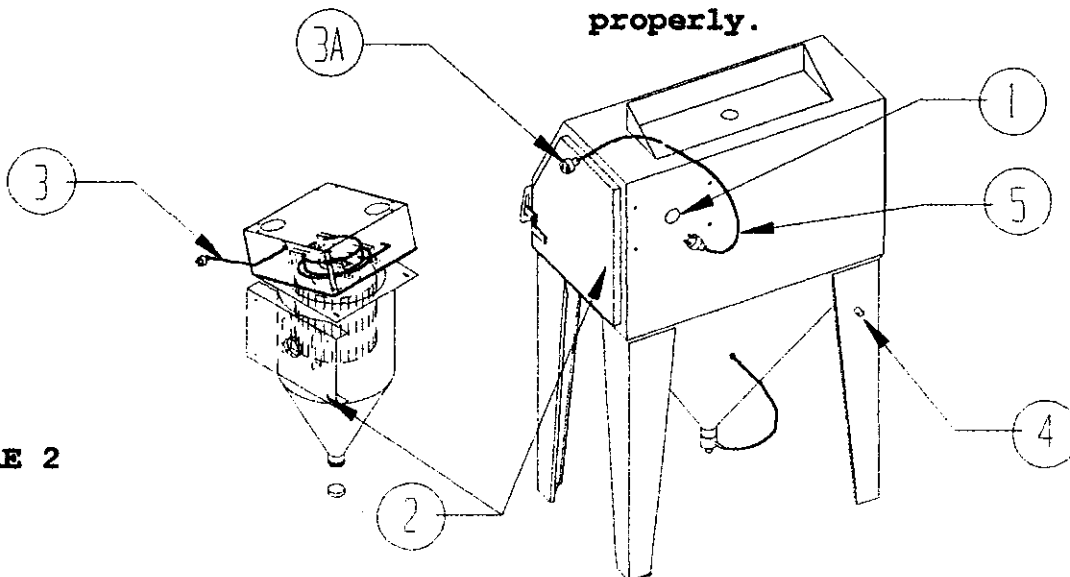


FIGURE 2

CAUTION ***CAUTION*** ***CAUTION*** ***CAUTION***
DO NOT USE SANDBLASTING SAND. THIS WILL CAUSE SILICA DUST, WHICH IS THE CAUSE OF SILICOSIS DISEASE, A CONDITION OF MASSIVE FIBROSIS OF THE LUNGS.

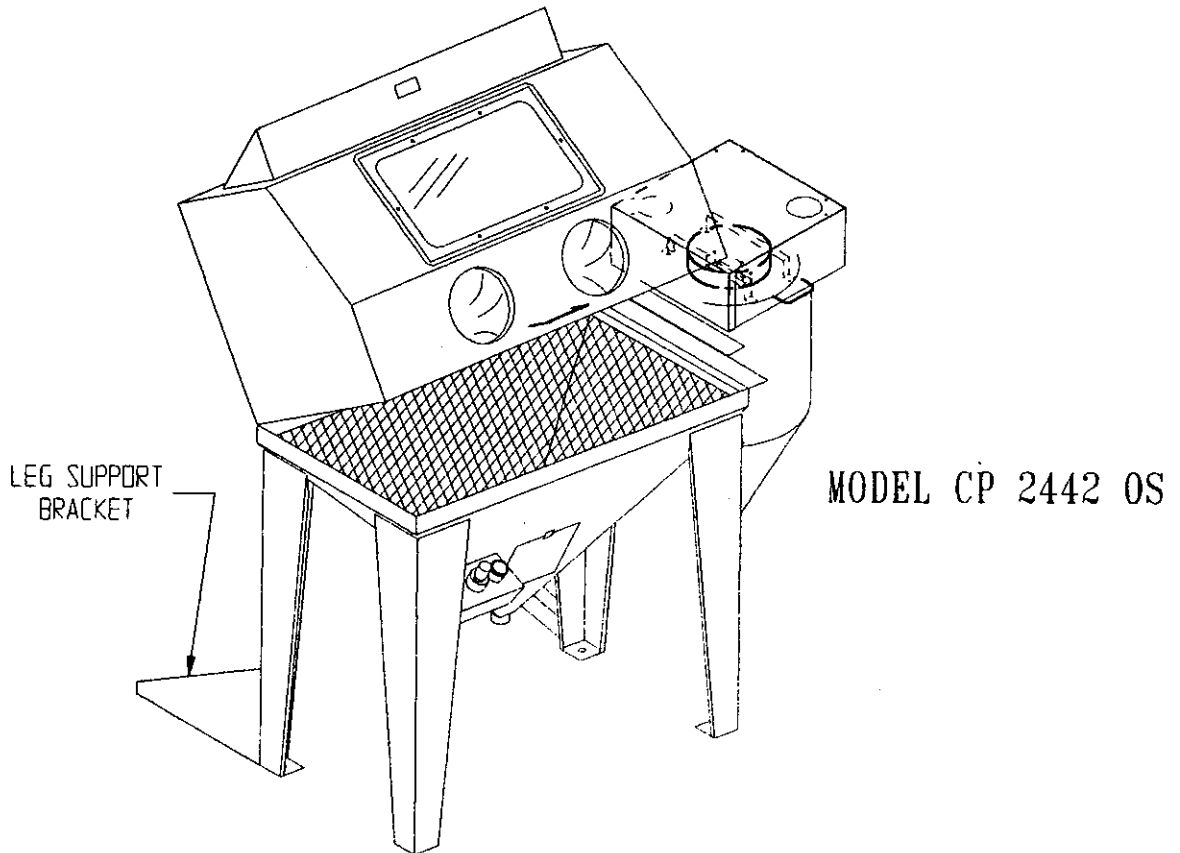
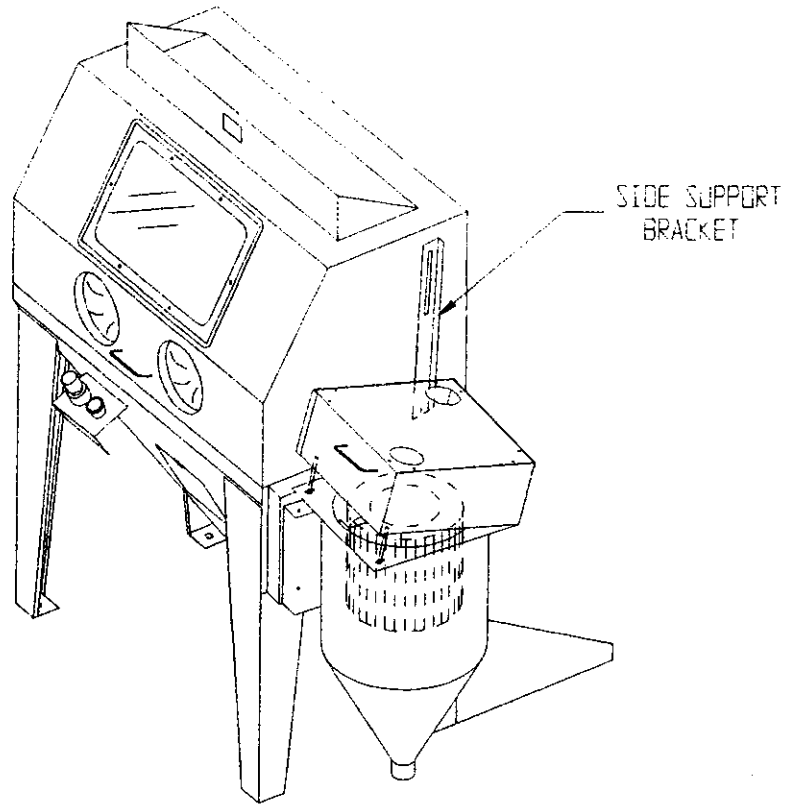
SET-UP INSTRUCTIONS
MODEL 24420S

1. Remove plastic from machine.
 2. Lift the top section and remove the bag of hardware and rear leg support brackets from machine.
- LIFT JUST ENOUGH TO REMOVE BAG OF HARDWARE, UNTIL STEP 3 IS COMPLETED.
3. Mount cabinet leg support brackets to the back of the machine using holes provided. (See Figure 3)
 4. Remove machine from the pallet.
 5. Lift top of machine and allow it to rest on the side support bracket.
 6. Remove dust collector and bag of hardware from machine.
 7. Install hand gun & air controls. (See Figure 1) Position hoses into slot provided in the grate. Lower grate back into place.
 8. Lower upper half of machine back into position.
 9. Position dust collector so that the inlet is aligned with hole in mounting plate. Secure dust collector to mounting plate with the bolts provided using holes punched in the mounting plate.
 10. Connect the dust collector motor cord to the factory installed female cord on the light box.
 11. Connect compressed air supply to fitting provided on left rear leg on the machine. Air piping should be of the same size as the connection point, offering no restriction to flow.
 12. Connect the factory installed male cord to a 110 Volt, 60HZ, single phase power supply. A 15 AMP breaker or fuse should be used.
 13. Turn compressed air supply on.

Consult the owners manual for correct operation and blasting procedures.

(READ PAGE 2) OPERATION AND
SERVICING OF DUST COLLECTOR

!***IMPORTANT***!



OYSTER SHELL

FIGURE 3

After installing Dust Collector, it is very important to follow the next steps. This will assure your machine will blast satisfactorily and have good visibility in blast chamber. (Refer to Figure 4)

1. Remove RED nuts securing the motor housing and cartridge holder to dust collector body. (Item 1) Discard these nuts, they are not used.
2. Loosen elastic nuts on back corners. (Item 2) Loosen until the elastic is to the bottom of the bolt thread. This will allow the motor housing and cartridge holder to rest securely on the gasket seal.
3. To clean cartridge: Turn Dust Collector switch off. Grasp lift handle and raise up and down vigorously allowing the top housing to thump on the body lip(#5). Do this repeatedly, until loose dust on the cartridge (#6) falls off into dust sump. This should be done every 30 minutes of blasting, or each time before use. It is a good idea occasionally to remove motor housing and with 10-15 PSI of line pressure from air nozzle, blow the cartridge pleats clean.

****CAUTION****

If compressed air is used for cleaning use low air pressure ONLY. High air pressure will blow holes in cartridge.

4. After thumping the cartridge, the drain cap (#7), should be removed and the dust emptied from dust collector sump, (#8), into a box, bag, or container, for ease of disposing.

THIS DUST SHOULD NOT BE REUSED.

5. If dust is detected coming from the vent holes (#9), this is an indication the cartridge is loose or leaking. Either tighten cartridge or replace. If not serviced this will cause the motor bearing to fail.
6. Maintained properly, you will enjoy the performance of this reliable type dust collector.

DUST COLLECTOR INSTALLATION

M2065-1

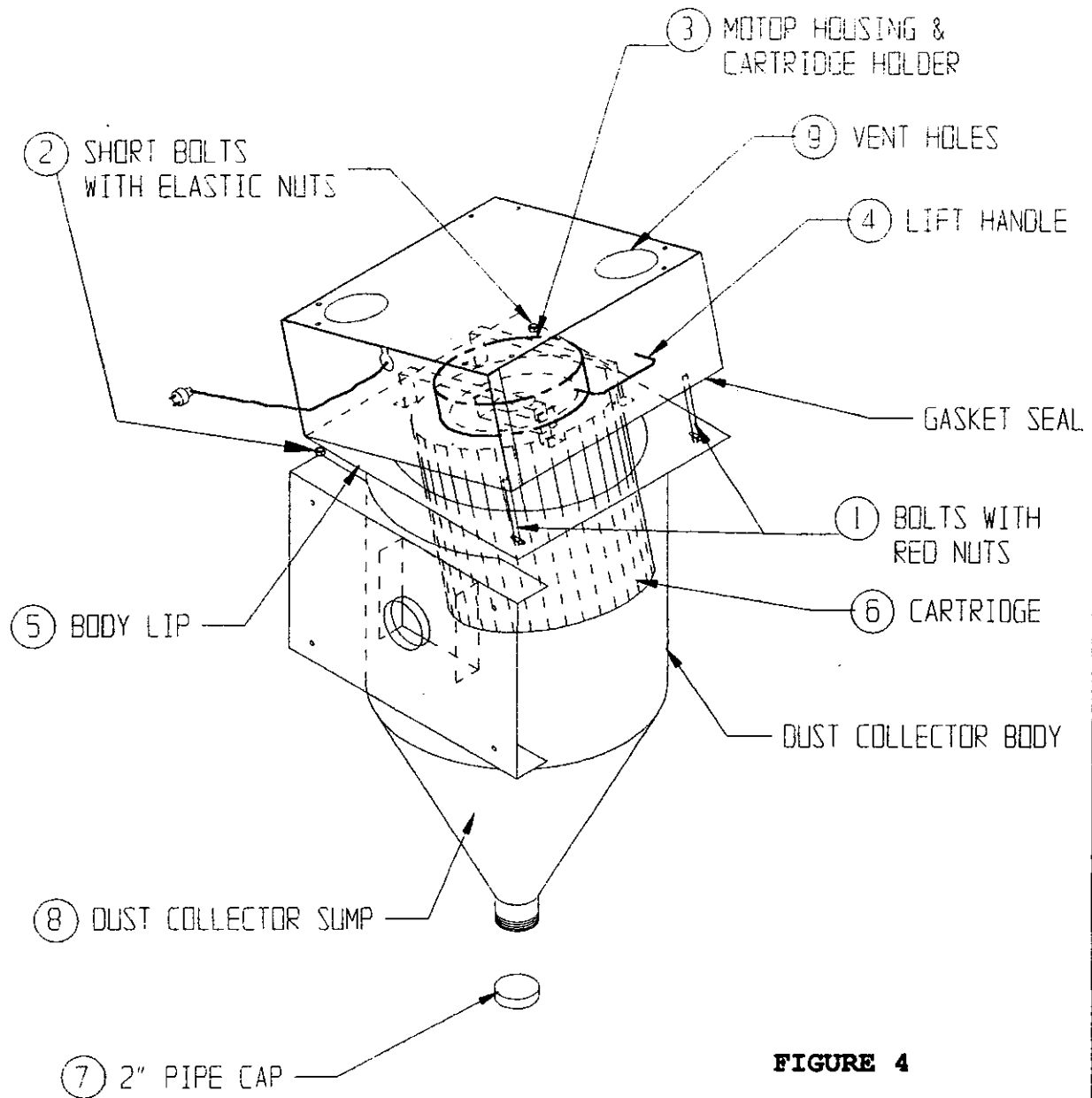


FIGURE 4

ITEM NO.	QTY.	DESCRIPTION
01	2	LONG BOLTS WITH NUTS
02	2	SHORT BOLTS WITH ELASTIC NUTS
03	1	MOTOR HOUSING & CARTRIDGE HOLDER
04	1	LIFT HANDLE
05	1	BODY LIP
06	1	CARTRIDGE
07	1	2" PIPE CAP
08	1	DUST COLLECTOR SUMP
09	2	VENTILATION HOLES

OPERATING INSTRUCTIONS

1. **Preparing parts for blasting:**
all parts to be processed must be free of Oil, grease and moisture. Make sure parts are dry before putting into cabinet for cleaning.
2. **Air Pressure:** 5 PSI to 80 PSI set air pressure at 80 PSIG. Most parts for blast cleaning can be blasted at 80 PSI. Designate parts to be processed, start at lower pressure and work up the PSI scale to obtain desired finish.

3. **Gun Angle and Distance:**
Direct blast at part with an approximate (45-60) degree angle with ricochet toward the back side of cabinet. Do not hold gun at 90 degree to part being processed. This will cause the media blast to bounce back into the blast stream and slow blasting action. Also 90 degree angle will cause excessive wear on gun and viewing window. Hold gun approximately 6 inches from part being cleaned.

4. **Media:**
Media should be of good quality and dry. Damp media will cause the media not to flow and will clog abrasive flow.
NEVER USE SAND
See "CAUTION", page 1. If you are having a problem selecting media for a specified job, contact your distributor for their recommendations.

WARNING

DO NOT CONNECT TO HIGH PRESSURE BOTTLE GAS, RUPTURE AND EXPLOSION CAN OCCUR.

WARNING

GUN MUST ALWAYS BE POINTED AWAY FROM THE OPERATOR AND TOWARD ITEM BEING PROCESSED. NEVER BLAST WITH ANY OF THE CABINET DOORS OPEN. WHILE LOADING AND UNLOADING, NO ONE SHOULD BE AT THE OPERATOR STATION AT FRONT OF THE BLAST CABINET.

OPTIONS

ACCESSORIES

UPGRADES

1. **Cabinet Right Door.**
2. **300 Reclaim System.**
3. **Machine Air Foot Controls with BIA Blast Gun.**
4. **Fluorescent Light Fixture & Control Box.**

**Contact Larry Hess & Associates for Price and Delivery.
1-800-535-2612**

INSTALLATION INSTRUCTIONS

RECLAIM KIT (300)

READ BEFORE OPERATING EQUIPMENT

1. Remove wrapping from reclaimer.
2. Open bag of hardware, nuts, bolts, clamps, putty tape etc.
Refer to Figure 5 - Page 10).
3. Position reclaimer with mounting bracket (#1) so that the inlet hole on bracket is aligned with inlet hole in the back of cabinet. Secure reclaimer to the machine with the bolts provided using four holes punched on the back of machine. (Two people are needed to install the reclaimer).
4. Remove media valve from sump of machine, Location #3, and install media valve on sump of reclaimer location #4. Install pipe cap to bottom sump of machine. Remove sump cover plate #2A, and discard. Apply new putty tape, squeeze together at seams for good seal, bolt #2, sump flex hose adaptor to sump. Using the same fasteners.
5. Attach media hose (#6), that feeds to bottom of blast gun housing to media valve (#4).
6. Attach flex hose (#5), to sump adaptor (#2), and reclaimer inlet with clamp (#7).
7. Attach filter bag (#9), to reclaimer outlet with hose clamp (#8).
8. Connect the reclaimer motor male plug (#10), to female plug cord from the light box.
9. Remove the small screen in sump of machine and discard. This screen is below the small sump door in front of machine. It is not used with reclaimer.
10. Connect compressed air supply to fitting provided on left rear leg of the machine. Air piping should be of the same size as the connection point, offering no restriction to flow.
11. Connect the factory installed male cord from light box, to adequate 100 Volt, 60 HZ., 1 Phase power supply. A 15 AMP breaker or fuse should be used.

DO NOT USE QUICK-DISCONNECTS

MAKE SURE MACHINE IS PROPERLY GROUNDED.

MACHINES WITH 300 CFM RECLAIMERS

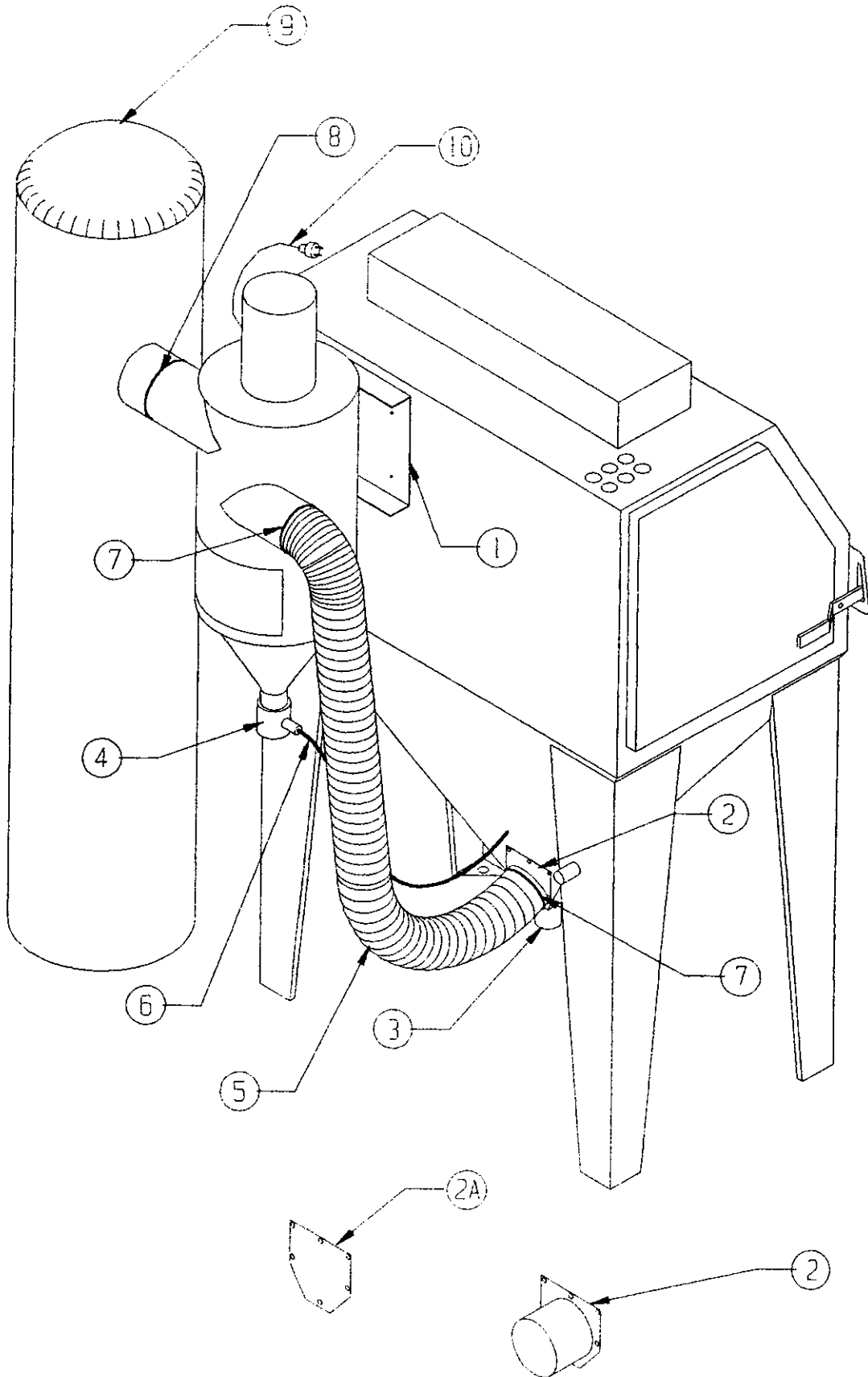


FIGURE 5

MAINTENANCE INSTRUCTIONS

1. **Blasting Gun:** After 10-12 hours of blasting time the air orifice and nozzle should be checked. If the nozzle shows wear, rotate $\frac{1}{4}$ turn to prevent uneven wear. If this is not checked, it could result in destruction of nozzle and damage to the gun housing. If wear is detected on the orifice tip, replace it.
2. **Caking of Media:**
 - A. Media caking is caused by moisture in compressed air supply of oily and greasy parts. If this is not corrected, media will not flow and will clog gun. Check air supply. If water or moisture is present, install a good moisture trap. If oily or greasy parts are being blast treated, you should first degrease and dry parts.
 - B. If blast gun should occasionally clog, place thumb over nozzle (hold tight) and push foot valve down 3 to 4 seconds. This will cause the system to back blast through the gun media hose and clear the media hose.
3. **Gun Air Pressure Drop:** Set air regulator at 80 PSI on air gauge. Push foot valve and if gauge reading should drop, check the air supply pipe or hose. A restriction in the supply line such as reducers or quick couplers will cause pressure drop. Also, if the blast cabinet is too far from the air compressor, a pressure drop can occur. We recommend $\frac{1}{2}$ "- 1" I.D. air supply line.
4. **Poor visibility - Excessive Dust:**
 - A. Cabinet air inlet blocked, check for blockage.
 - B. Dust collector sump full and needs emptying.
 - C. Cartridge contaminated. Clean by pushing up and down.
 - D. Media breakdown - replace media.
5. **Poor Media Flow:**
 - A. Wet or damp media caused from moisture or oil in compressed air line.
 - B. Use dry air or install moisture filter.
 - C. Replace media and clean media sump hose.
 - D. Media level should be below media screen.
 - E. Hole in media hose from wear, replace hose assembly.
 - F. Air orifice assembly in gun worn, replace assembly.

DO NOT OPEN ANY OF THE DOORS WHEN MACHINE IS IN OPERATION.

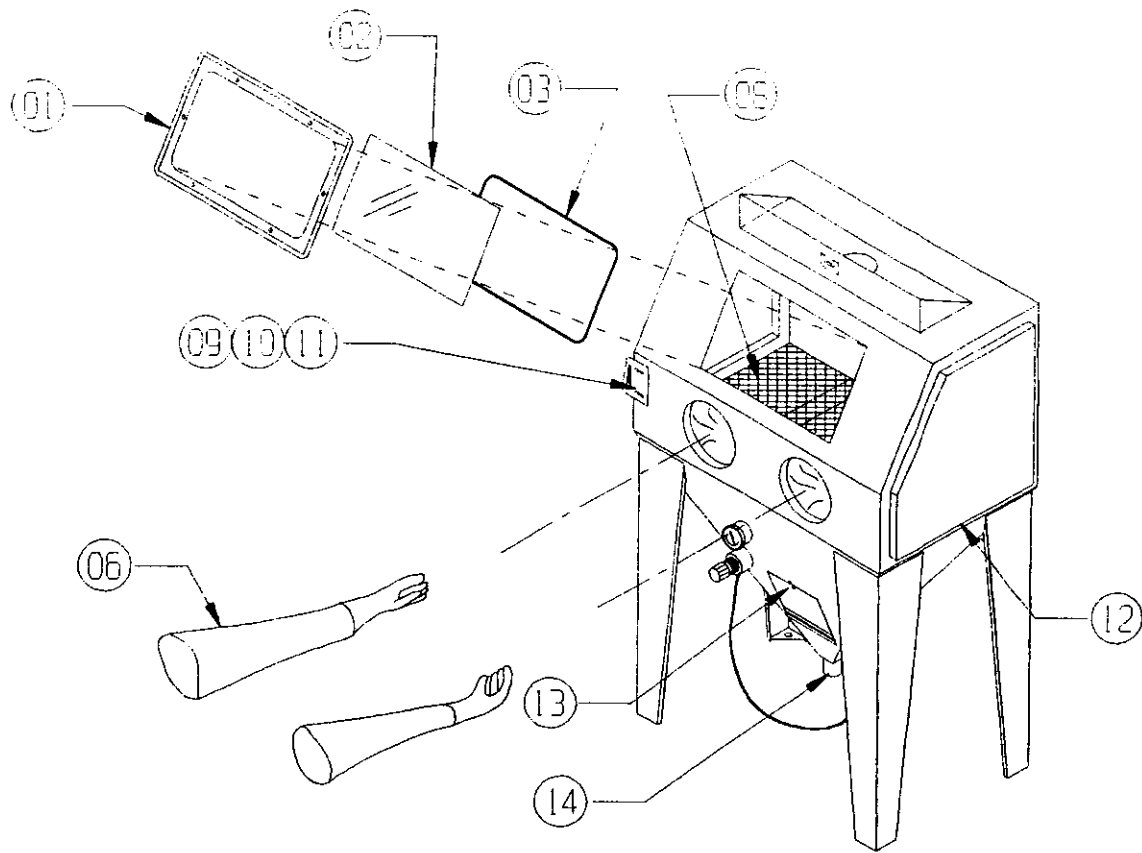
WARNING

GUN MUST ALWAYS BE POINTED AWAY FROM THE OPERATOR AND TOWARD ITEM BEING PROCESSED. NEVER BLAST WITH ANY OF THE CABINET DOORS OPEN. WHILE LOADING AND UNLOADING, NO ONE SHOULD BE AT THE OPERATOR STATION AT FRONT OF THE BLAST CABINET.

STANDARD MACHINE

M:37

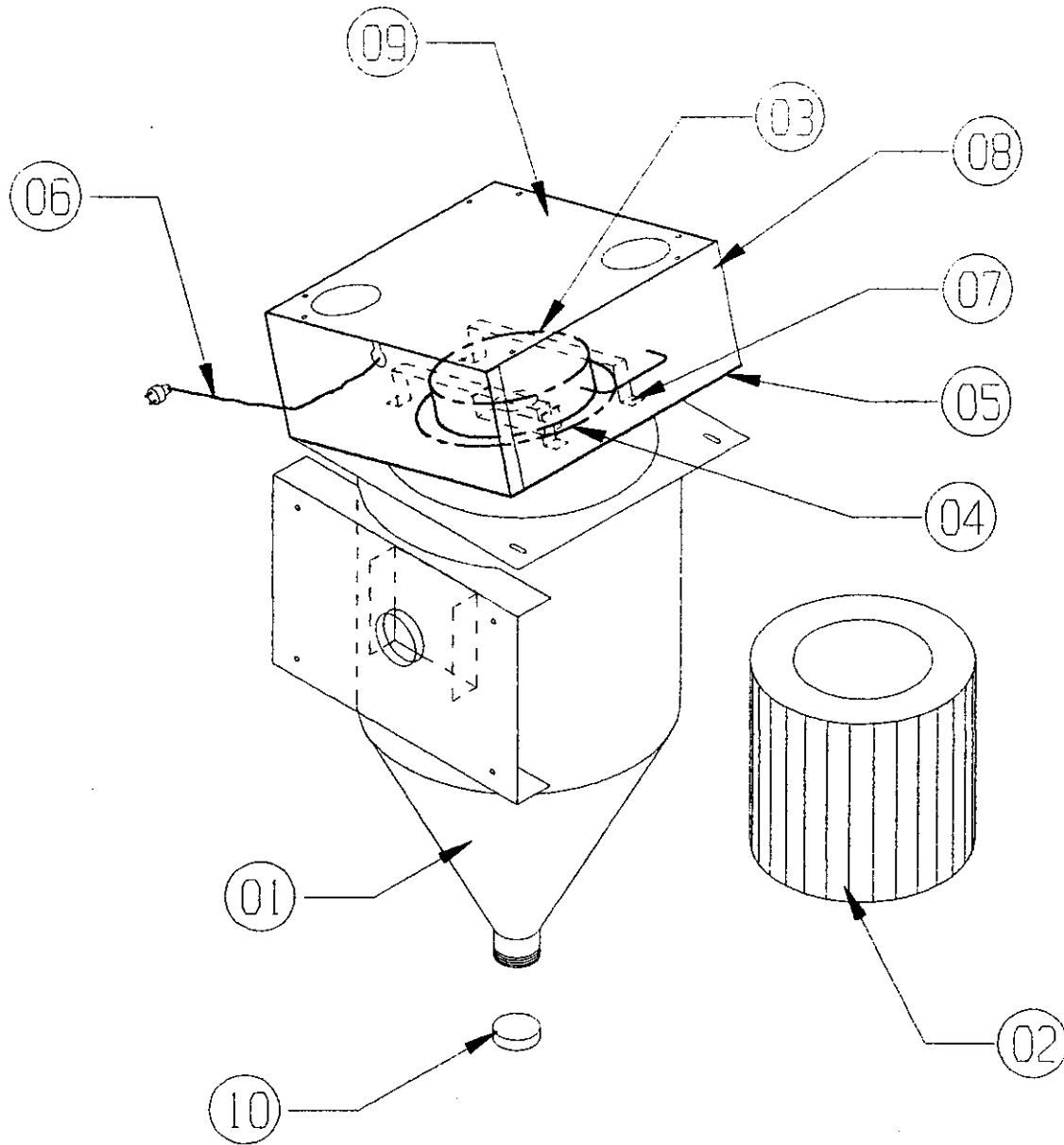
MODEL - CP 2440



ITEM NO.	QTY.	DESCRIPTION	PART NO.
01	1	WINDOW FRAME	23-053
02	1	WINDOW, VIEWING	23-050
03	1	WINDOW GASKET (SPECIFY LENGTH)	24-054
04			
05			
06	1	GLOVES, SNAP-IN (PAIR)	22-110
06A	1	GLOVE, SNAP-IN (LEFT ONLY)	22-111
06B	1	GLOVE, SNAP-IN (RIGHT ONLY)	22-112
07			
08	1	GRATE (SPECIFY MODEL NO.)	10-152
09	1	DOOR STRIKER	15-718
10	1	DOOR CAM	15-719
11	1	DOOR CAM RUBBER GRIP	15-720
12	1	DOOR GASKET (SPECIFY LENGTH)	24-054
13	1	CLEAN OUT DOOR GASKET	24-055
14	1	DRAIN CAP	010212

FIGURE A

DUST COLLECTOR

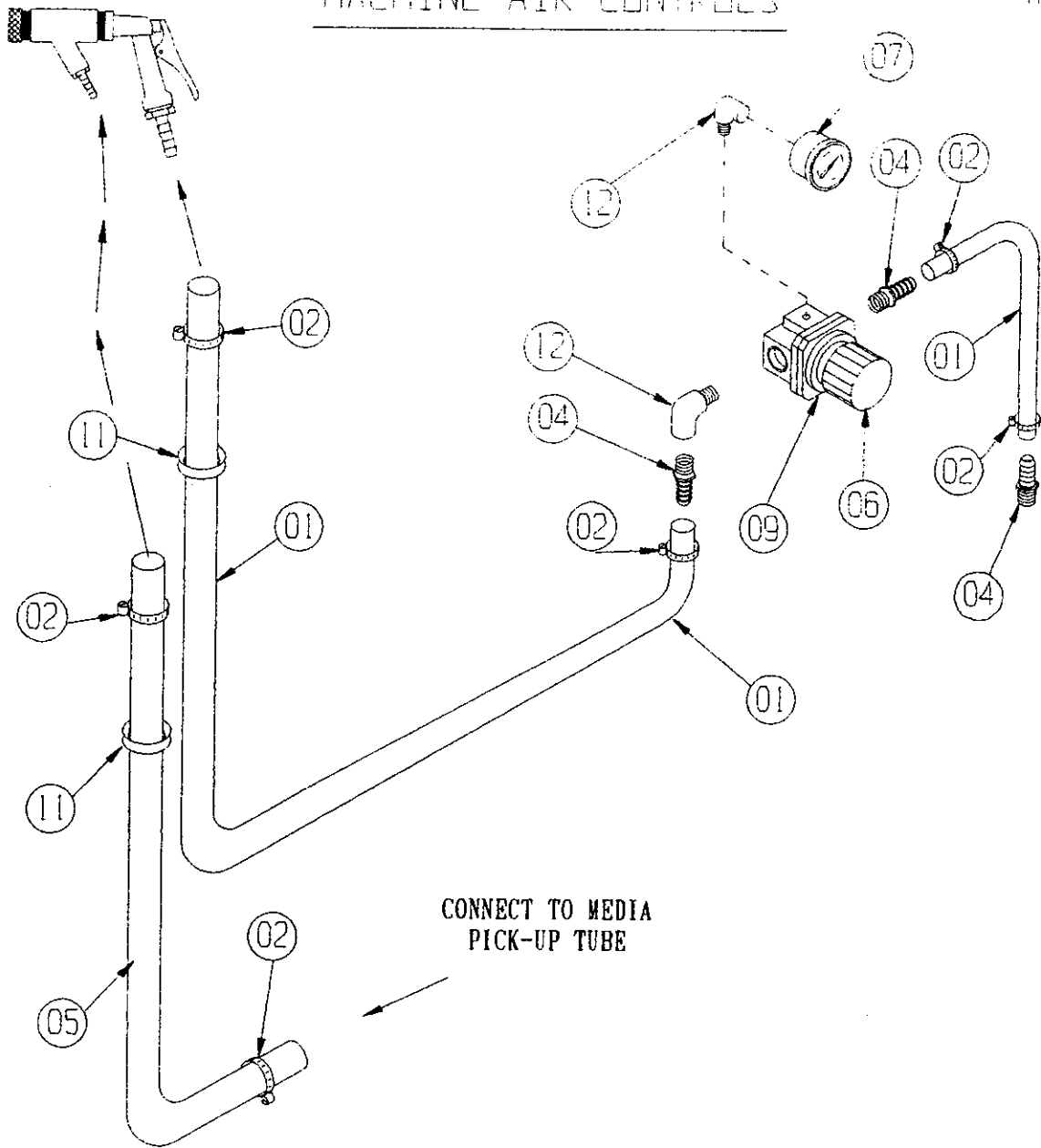


ITEM NO.	QTY.	DESCRIPTION	PART NO.
01	1	DUST COLLECTOR	02025
02	1	DUST COLLECTOR CARTRIDGE	11-1524
03	1	MOTOR, 120V	13-200
04	1	GASKET, MOTOR SEAL	24-056
05	1	GASKET, TOP SEALING (SPECIFY LENGTH)	24-054
06	1	CORD, MALE PLUG	010172
07	2	MOTOR BRACKETS	02025-09
08	1	MOTOR HOUSING	02025-05 & 02025-06
09	1	COVER PLATE	02025-04
10	1	DRAIN CAP	010212

FIGURE B

MACHINE AIR CONTROLS

M7039

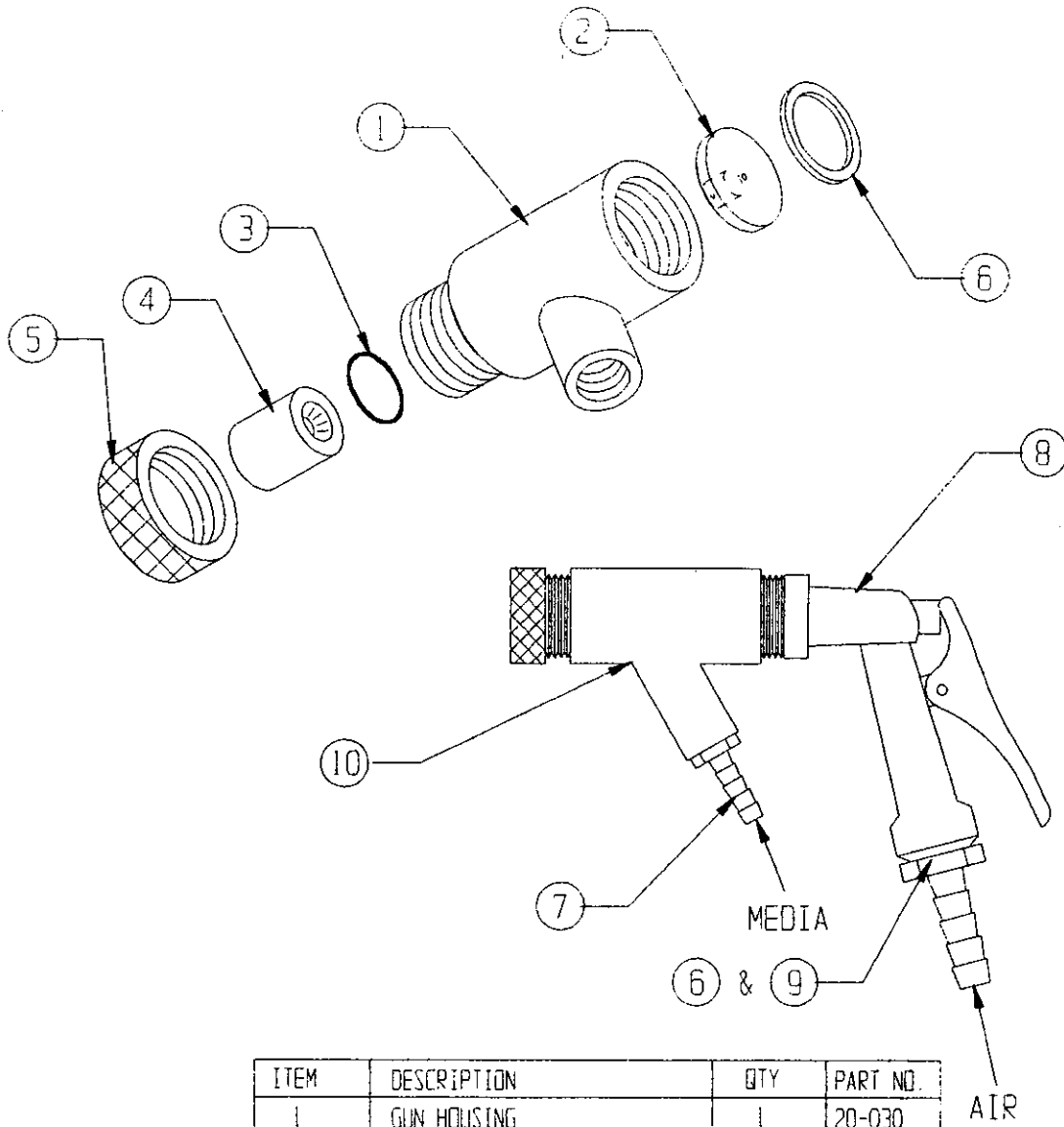


CONNECT TO MEDIA
PICK-UP TUBE

ITEM NO.	QTY.	DESCRIPTION	PART NO.
01	1	HOSE, AIRLINE (SPECIFY LENGTH)	18-076
02	1	CLAMP HOSE	21-032
03	1	FITTING, 1/2" HOSE x 3/8" MPT	14-302
04	1	FITTING, 1/2" HOSE x 1/2" MPT	14-301
05	1	HOSE, MEDIA LINE (SPECIFY LENGTH)	18-084
06	1	REGULATOR AIR 1/2"	16-965
07	1	GAUGE, AIR	16-320
08			
09	1	REGULATOR LOCK RING	16-965 LP
10	1	1/4" STREET ELL	14-524
11	1	GROMMET HOSE	24-050
12	1	1/2" STREET ELL	004585

FIGURE C

HAND GUN
ASSEMBLY



ITEM	DESCRIPTION	QTY	PART NO.
1	GUN HOUSING	1	20-030
2	ORIFICE #4 (4/32)	1	20-034
3	"O" RING	1	20-053
4	NOZZLE CERAMIC #4 (4/16)	1	20-074
5	NOZZLE NUT	1	20-054
6	SEAL	2	20-033
7	FITTING (MEDIA HOSE)	1	14-304
8	TRIGGER BODY	1	010457
9	FITTING 3/4 MGH x 1/2	1	010456
10	COMPLETE ASSEMBLY	1	20-001
11			

FIGURE D

MEDIA
PICK-UP
TUBE

CONNECT TO
MEDIA HOSE

ORDER NO.
010464

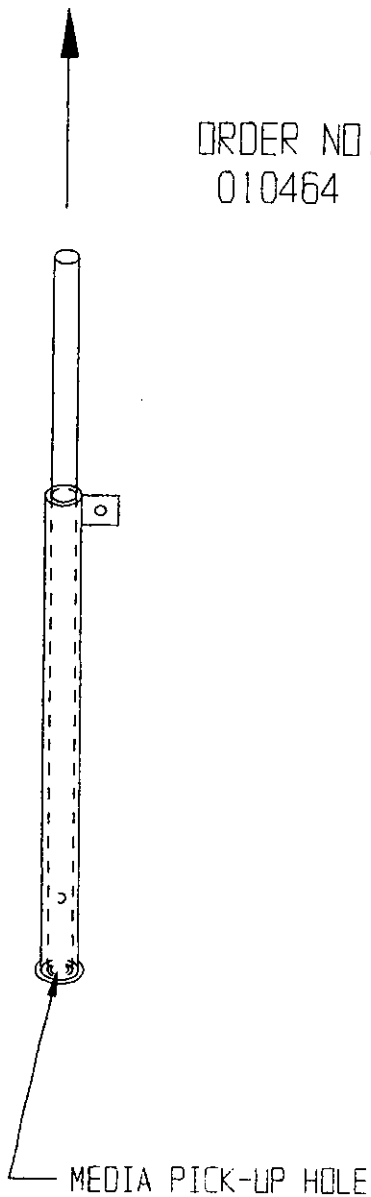
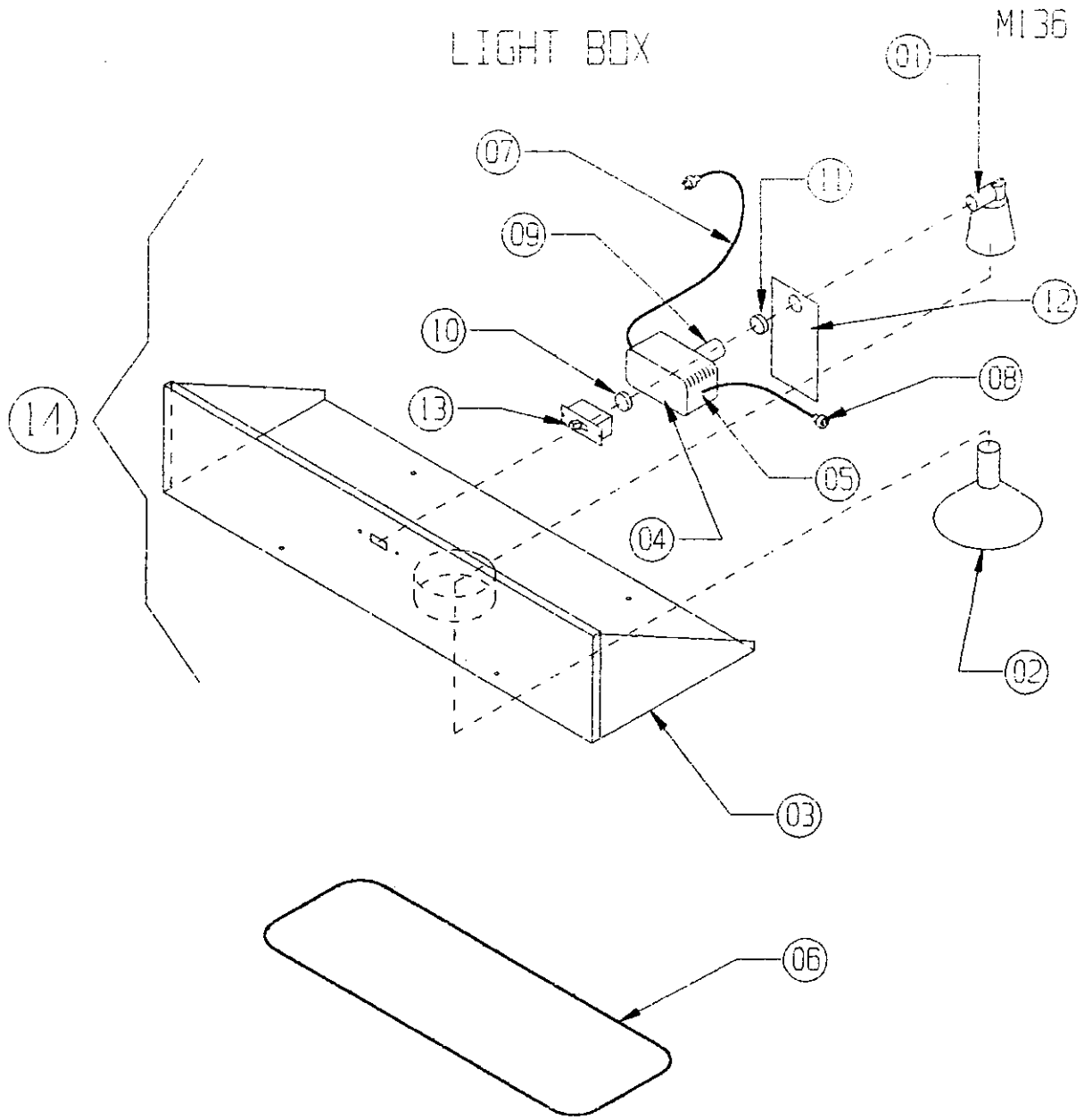


FIGURE E

LIGHT BOX

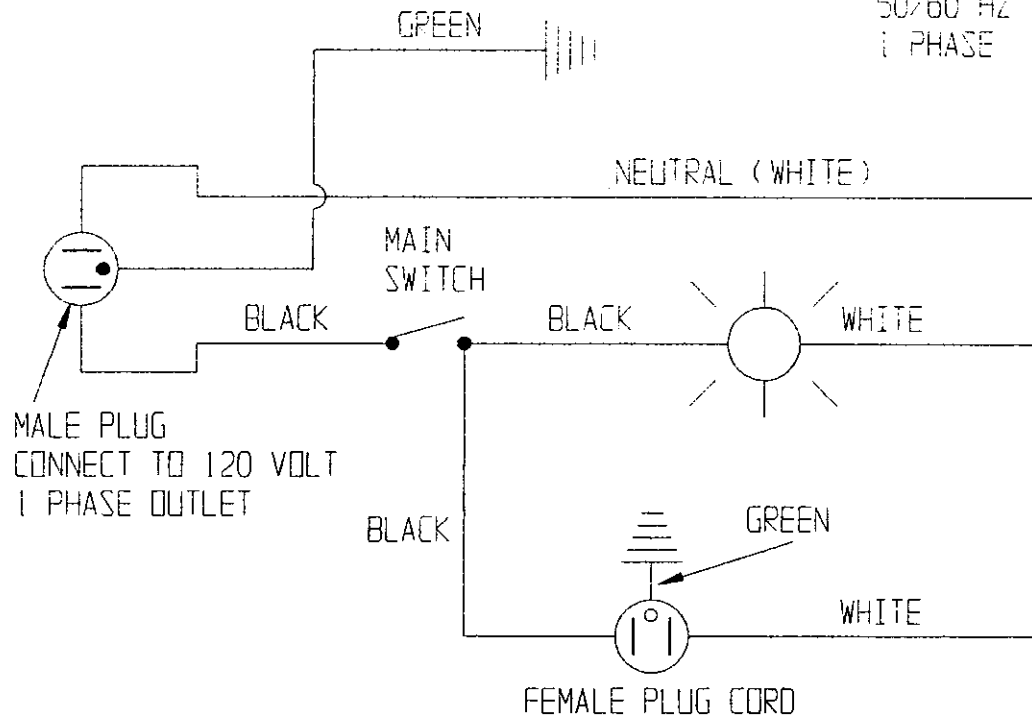


14	1	COMPLETE LIGHT BOX (EXCEPT 6)	CONTACT FACTORY
13	1	SWITCH	13 655
12	1	SUPPORT BRACKET	A618-04
11	1	NUT	006201
10	1	CHASE NIPPLE	010462
09	1	COUPLING	14-339
08	1	CORD WITH FEMALE PLUG	010172
07	1	POWER CORD, 3 WIRE	13-550
06	1	LIGHT BOX GASKET (64")	24-054-64
05	1	HEYCO CONNECTOR	13-605
04	1	2 x 4 JUNCTION BOX	13-570
03	1	LIGHT BOX ASS'Y.	A618
02	1	LIGHT BULB	010463
01	1	LIGHT FIXTURE, (NO BULB)	010461
ITEM NO.	QTY.	DESCRIPTION	DWG. NO.

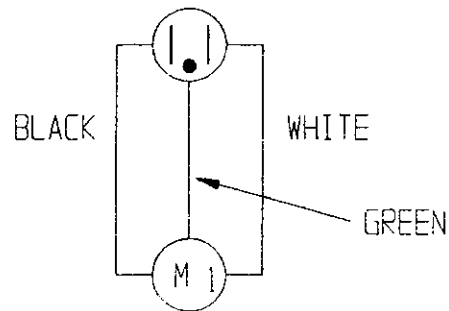
FIGURE F

ELECTRICAL DIAGRAM

120 VOLT POWER
50/60 HZ
1 PHASE



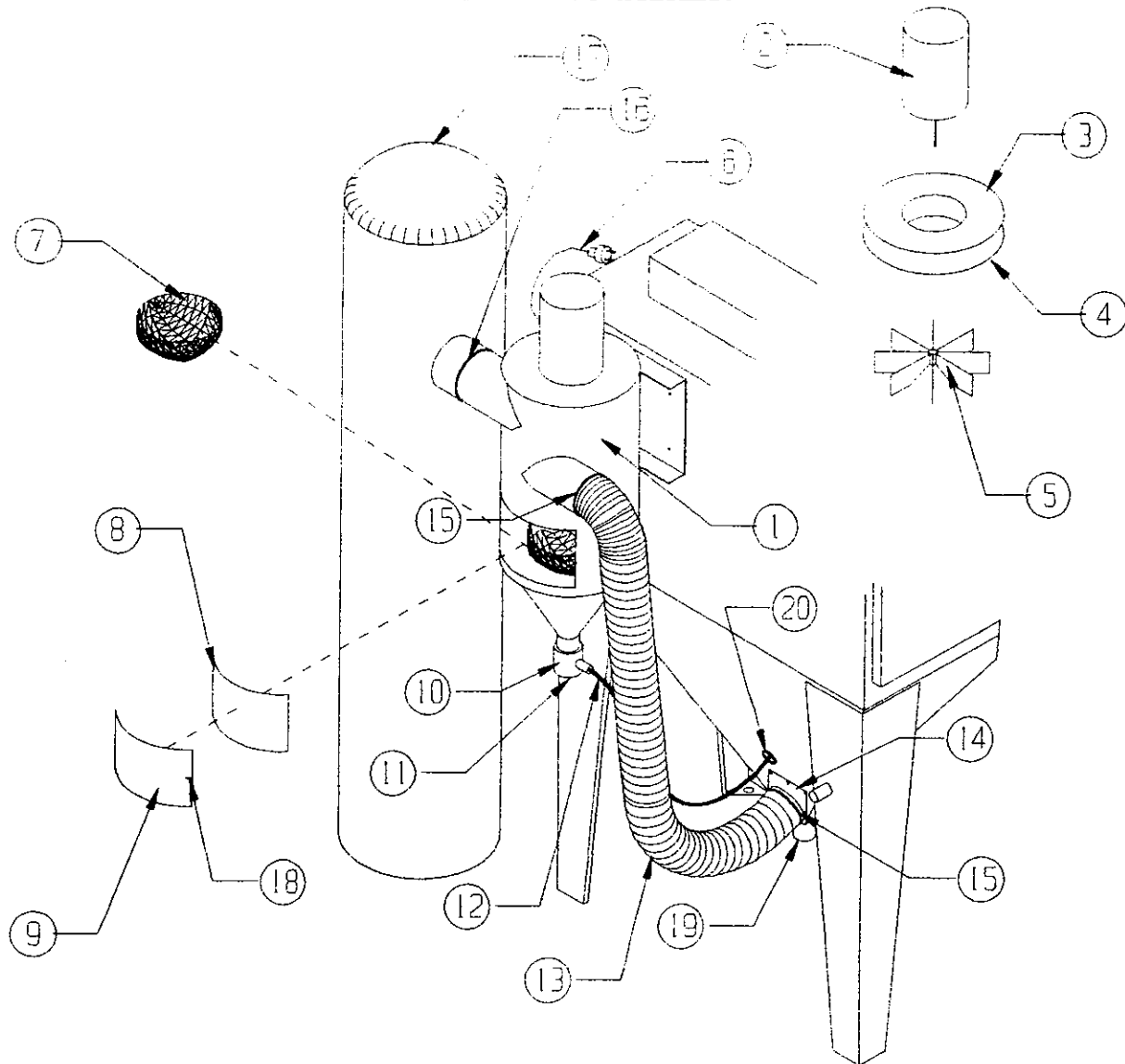
MALE PLUG CORD



DUST COLLECTOR MOTOR

FIGURE G

300 CFM RECLAIMER



ITEM NO.	PART NO.	DESCRIPTION
1	11-301	RECLAIMER HOUSING
2	13-400	MOTOR
3	11-426	MOTOR PLATE
4	24-030	MOTOR PLATE GASKET
5	11-418	BLADE ASSEMBLY
6	13-551	MOTOR ELECTRICAL CORD & PLUG
7	11-406	TRASH SCREEN BASKET
8	11-403	RECLAIM DOOR GASKET
9	11-402	RECLAIM DOOR
10	20-200	2" MEDIA VALVE
11	20-201	2" MEDIA VALVE PLUG
12	18-084	MEDIA HOSE
13	19-092	4" FLEX HOSE
14	A590	SUMP FLEX HOSE ADAPTOR
15	21-034	FLEX HOSE CLAMPS
16	21-035	DUST BAG CLAMP
17	11-415	DUST BAG
18	15-728	RECLAIM SCOOP LATCH
19	010212	2" PIPE CAP
20	24-050	GROMMET

FIGURE H