

# LITTLE BLASTER™

LARRY HESS AND ASSOCIATES, INC.

BLAST-IT-ALL®

P.O. BOX 1615

SALISBURY, NC 28145

[WWW.BLAST-IT-ALL.COM](http://WWW.BLAST-IT-ALL.COM)

**LITTLE BLASTER™**

## **LBT-3 WITH 300 CFM RECLAIM**

**MANUAL NUMBER: 506**

### **TABLE OF CONTENTS**

| <b>PAGE</b> | <b>FIGURE</b> |   |
|-------------|---------------|---|
| <b>1</b>    | <b>-</b>      | <b>SET-UP INSTRUCTIONS</b>                |
| <b>1</b>    | <b>-</b>      | <b>OPERATING INSTRUCTIONS</b>             |
| <b>1</b>    | <b>-</b>      | <b>GENERAL MAINTENANCE</b>                |
| <b>2</b>    | <b>1</b>      | <b>STANDARD CABINET AND RECLAIM PARTS</b> |
| <b>3</b>    | <b>2</b>      | <b>BASKET DRIVE &amp; PARTS</b>           |
| <b>4</b>    | <b>3</b>      | <b>BASKET</b>                             |
| <b>5</b>    | <b>4</b>      | <b>MEDIA HOSE &amp; PARTS</b>             |
| <b>6</b>    | <b>5</b>      | <b>MEDIA VALVE</b>                        |
| <b>7</b>    | <b>6</b>      | <b>BASKET DRIVE</b>                       |
| <b>8</b>    | <b>7</b>      | <b>AIR CONTROL</b>                        |
| <b>9</b>    | <b>8</b>      | <b>BLAST GUN</b>                          |
| <b>10</b>   | <b>9</b>      | <b>ELECTRICAL BOX</b>                     |
| <b>11</b>   | <b>10</b>     | <b>ELECTRICAL DIAGRAM</b>                 |
| <b>12</b>   | <b>-</b>      | <b>MACHINE WARRANTY</b>                   |

### **WARNING**

**DO NOT USE SAND.** SAND WILL CAUSE SILICA DUST, WHICH IS THE CAUSE OF SILICOSIS DISEASE, A CONDITION OF MASSIVE FIBROSIS OF THE LUNGS. THIS STATEMENT INDICATES POTENTIAL PERSONNEL HAZARD.

**FAILURE TO COMPLY WITH THESE INSTRUCTIONS  
MAY RESULT IN PERSONAL INJURY.**

WEBSITE CONCERNING SILICOSIS:

[http://www.osha.gov/Silica/IT69D\\_1.html](http://www.osha.gov/Silica/IT69D_1.html)

# LITTLE BLASTER™

## SET-UP INSTRUCTIONS

### MACHINES WITH 300 CFM RECLAIM

**\*\*\* READ BEFORE OPERATING EQUIPMENT \*\*\***

1. Remove plastic from machine.
2. Remove lag bolts from each of the four legs, then remove machine from the pallet.
3. Remove bag & clamp from machine.
4. Connect compressed air supply to air filter. Air piping should be of the same size as the connection point, offering no restriction to flow.
5. Connect the factory installed male cord from electrical box, to a 120-Volt, 60 HZ, 1 Phase power supply. A 20 AMP breaker or fuse should be used.

**(DO NOT USE QUICK-DISCONNECTS)**

**MAKE SURE MACHINE IS PROPERLY GROUNDED.**

## OPERATING INSTRUCTIONS

### 1. **Preparing parts for Blasting:**

All parts to be processed must be free of oil, grease, and moisture. Make sure parts are dry before putting into basket for cleaning.

### 2. **Air Pressure:**

5 PSI to 80 PSI. Set air pressure at 80 PSIG. Most parts for blasting cleaning cabinet should be blasted at 80 psi. Designate parts to be processed, start at lower pressure and work up the PSI scale to obtain desired finish.

**\*\*\*WARNING\*\*\***

**DO NOT CONNECT TO HIGH PRESSURE BOTTLE GAS, RUPTURE AND EXPLOSION CAN OCCUR.**

## GENERAL MAINTENANCE

### 1. **Blasting Gun:**

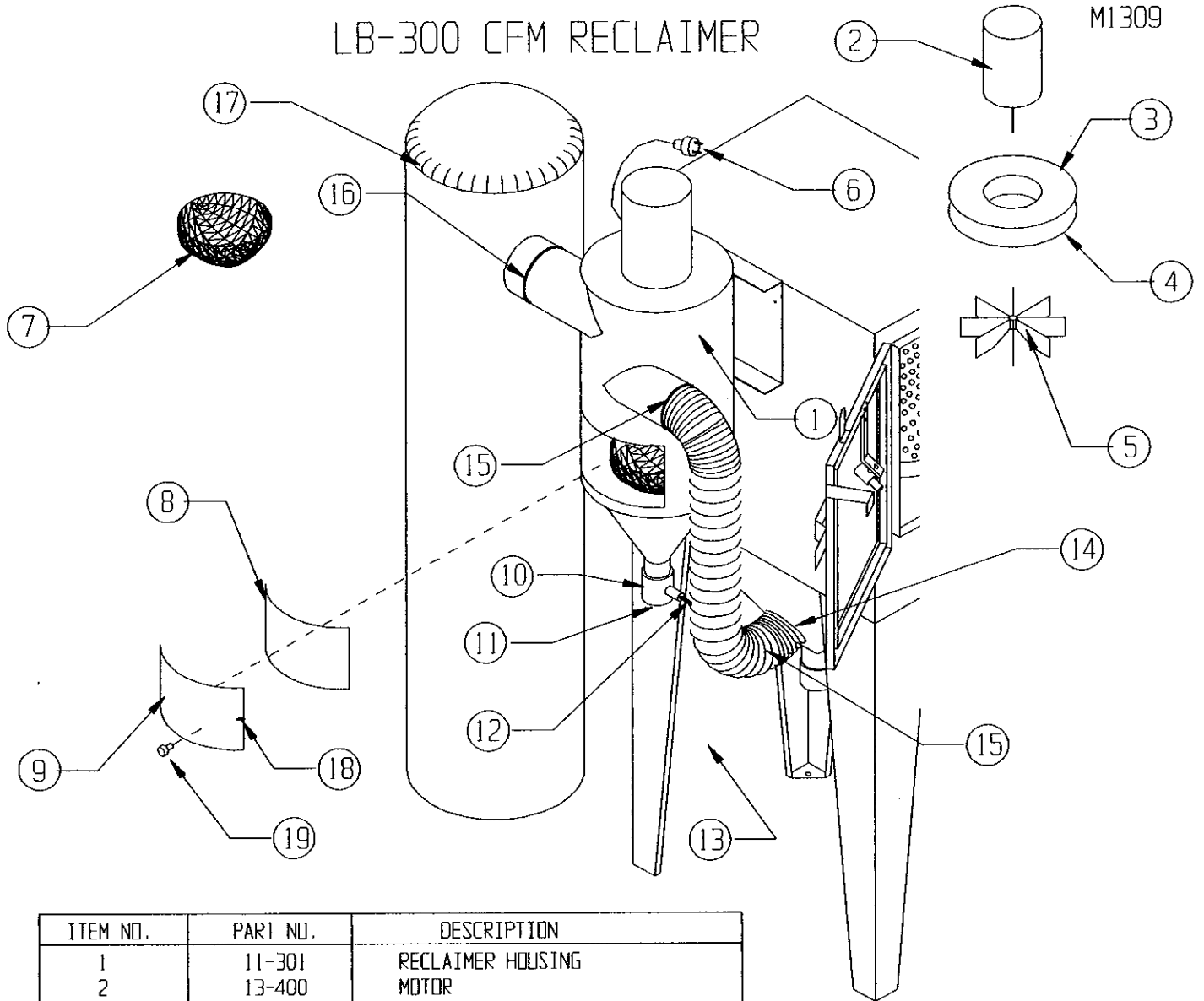
After 10 - 12 hours of blasting time the air orifice and nozzle should be checked. If the nozzle shows wear, rotate 1/4 turn to prevent uneven wear. If this is not checked, it could result in destruction of nozzle and damage to the gun housing. If wear is detected on the orifice tip, replace.

### 2. **Caking of Media:**

Media caking is caused by moisture in compressed air supply or oily and greasy parts. If this is not corrected, media will not flow and will clog gun. Check air supply. If water or moisture is present, install a good moisture trap. If oily or greasy parts are being blast treated, you should first degrease and dry parts.

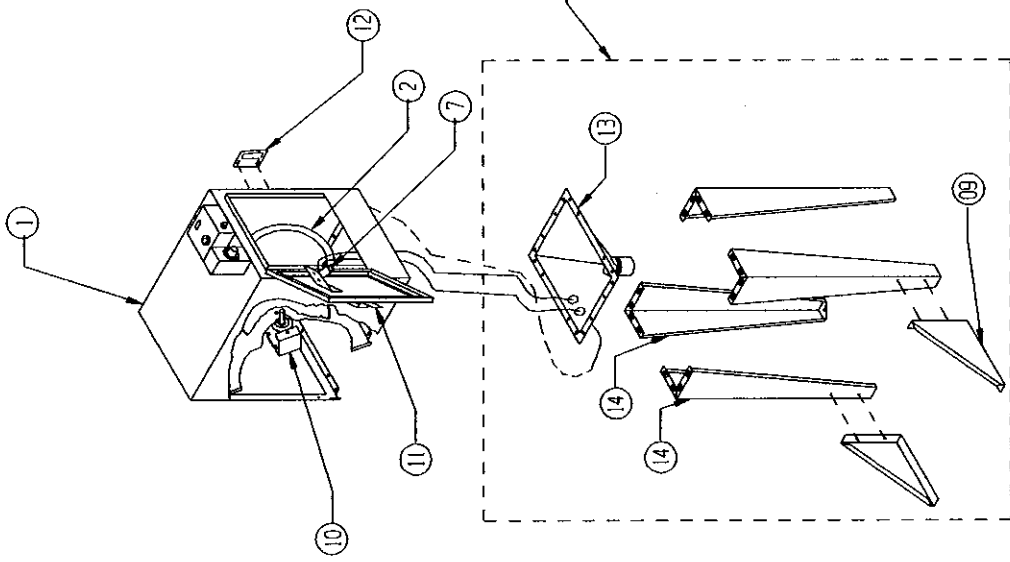
# LB-300 CFM RECLAIMER

M1309



| ITEM NO. | PART NO. | DESCRIPTION                  |
|----------|----------|------------------------------|
| 1        | 11-301   | RECLAIMER HOUSING            |
| 2        | 13-400   | MOTOR                        |
| 3        | 11-426   | MOTOR PLATE                  |
| 4        | 24-030   | MOTOR PLATE GASKET           |
| 5        | 11-418   | BLADE ASSEMBLY               |
| 6        | 13-551   | MOTOR ELECTRICAL CORD & PLUG |
| 7        | 11-406   | TRASH SCREEN BASKET          |
| 8        | 11-403   | RECLAIM DOOR GASKET          |
| 9        | 11-402   | RECLAIM DOOR                 |
| 10       | 20-200   | 2" MEDIA VALVE               |
| 11       | 20-201   | 2" MEDIA VALVE PLUG          |
| 12       | 18-084   | MEDIA HOSE 5' LONG           |
| 13       | 19-092   | 4" FLEX HOSE 4' LONG         |
| 14       | A590     | SUMP FLEX HOSE ADAPTOR       |
| 15       | 21-034   | FLEX HOSE CLAMPS             |
| 16       | 21-035   | DUST BAG CLAMP               |
| 17       | 11-415   | DUST BAG                     |
| 18       | 15-728   | RECLAIM DOOR LATCH           |
| 19       | A1035    | AIR INDUCER                  |

FIGURE 1



NOTE:

1. AIR HOSE FROM REGULATOR AND HOSE FROM MEDIA SIPHON ASSEMBLY TO BE CONNECTED TO GUN BY USER.
2. BASKET, LEGS AND MEDIA SIPHON ASSEMBLY TO BE ASSEMBLED TO CABINET AFTER SHIPMENT.

NOTE: ITEMS IN THIS AREA TO BE ASSEMBLED AFTER SHIPMENT BY USER.

|      |                    |          |      |
|------|--------------------|----------|------|
| 14   | LEG                | A14085   | 4    |
| 13   | SUMP               | A14086   | 1    |
| 12   | DOOR STRIKER PLATE | 15-730   | 1    |
| 11   | DOOR LATCH         | 15-719   | 1    |
| 10   | MOTOR ASSEMBLY     | 13-909   | 1    |
| 9    | LEG BRACE          | B191-05  | 2    |
| 8    |                    |          |      |
| 7    | GUN ASSEMBLY       |          | 1    |
| 6    |                    |          |      |
| 5    | 60 MIN. TIMER      | 001371   | 1    |
| 4    |                    |          |      |
| 3    |                    |          |      |
| 2    | BASKET             | A14080   | 1    |
| 1    | CABINET ASSEMBLY   | B14014   | 1    |
| ITEM | DESCRIPTION        | PART NO. | QTY. |

LARRY HESS & ASSOCIATES, INC.  
SALTSBURY, NORTH CAROLINA

|                                  |                     |                       |                     |
|----------------------------------|---------------------|-----------------------|---------------------|
| DESCRIPTION: ASSEMBLY 12" TUMBLE |                     | MATERIAL:             |                     |
| BASKET BLASTER                   |                     |                       |                     |
| DATE: 05/28/01                   | SCALE: 1/4" = 1'-0" | DATE: 05/28/01        | SCALE: 1/4" = 1'-0" |
| BY: [Signature]                  | BY: [Signature]     | BY: [Signature]       | BY: [Signature]     |
| DRAWING NO.: B14015-2            |                     | DRAWING NO.: B14015-2 |                     |

CONFIDENTIAL

THE DISCUSSION AND CONTENTS OF THIS DRAWING ARE CONFIDENTIAL AND ARE THE EXCLUSIVE PROPERTY OF LARRY HESS & ASSOCIATES, INC. THIS DRAWING IS NOT TO BE COPIED OR REPRODUCED WHOLLY OR IN PART WITHOUT WRITTEN PERMISSION OF LARRY HESS & ASSOCIATES, INC.

|      |                      |              |
|------|----------------------|--------------|
| REV. | DESCRIPTION          | DATE         |
| 1    | CHANGED TIMER PART # | DEC 05/14/01 |

LARRY HESS & ASSOCIATES

DESCRIPTION

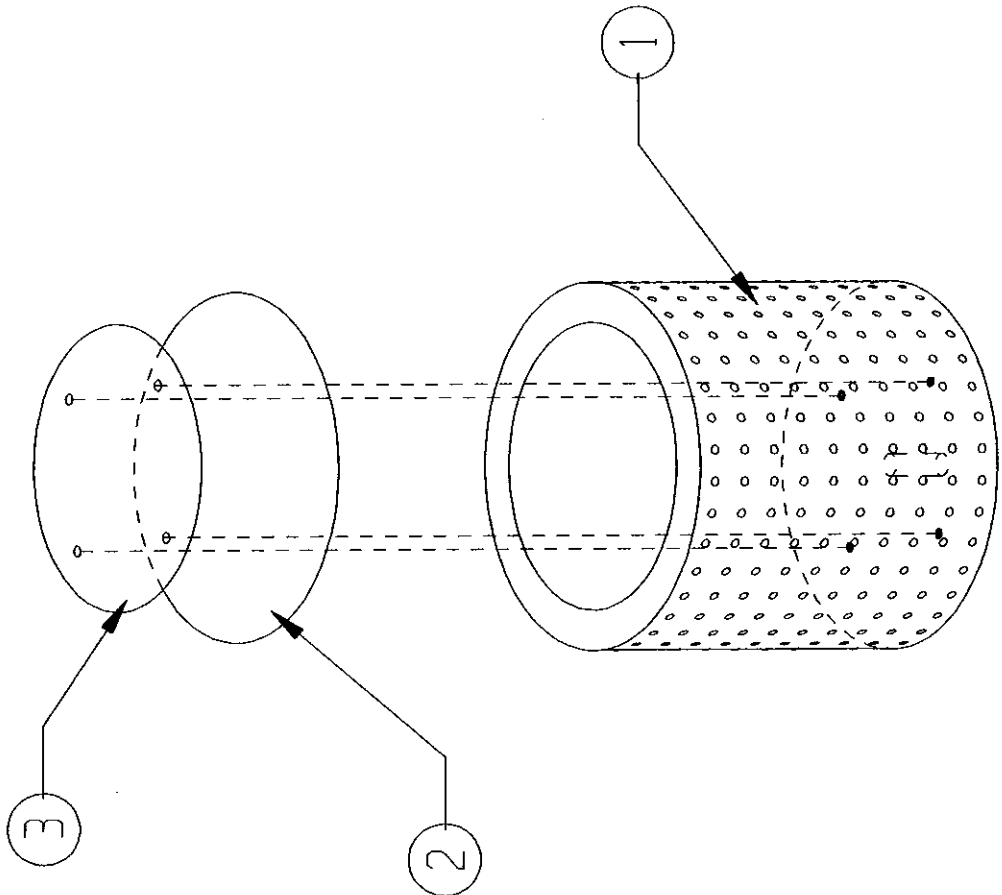
LBT-3 REPLACEMENT BASKET

DATE 09/18/01

ENGINEER DEC

DWG. NO. A14080-M

SCALE: 3/16"



| ITEM | DESCRIPTION        | PART NO. | QTY. |
|------|--------------------|----------|------|
| 3    | WEAR PLATE         | 009043-5 | 1    |
| 2    | WEAR RUBBER BOTTOM | 009043-6 | 1    |
| 1    | BASKET ASSEMBLY    | 009043   | 1    |

LARRY HESS & ASSOCIATES

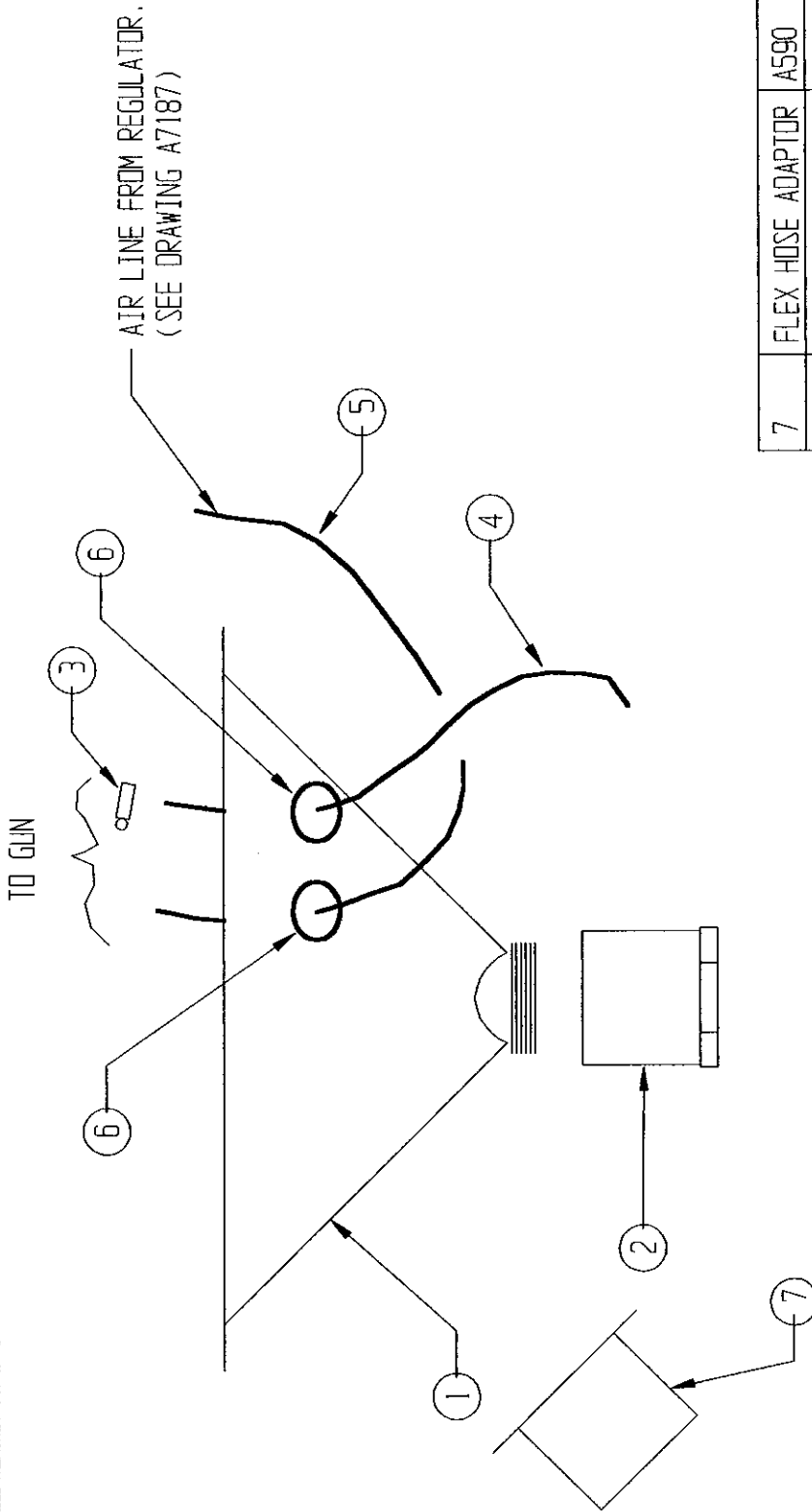
DESCRIPTION

MEDIA SIPHON ASSEMBLY

DATE 05/30/00

ENGINEER L J F

DWG. NO. A14094-1

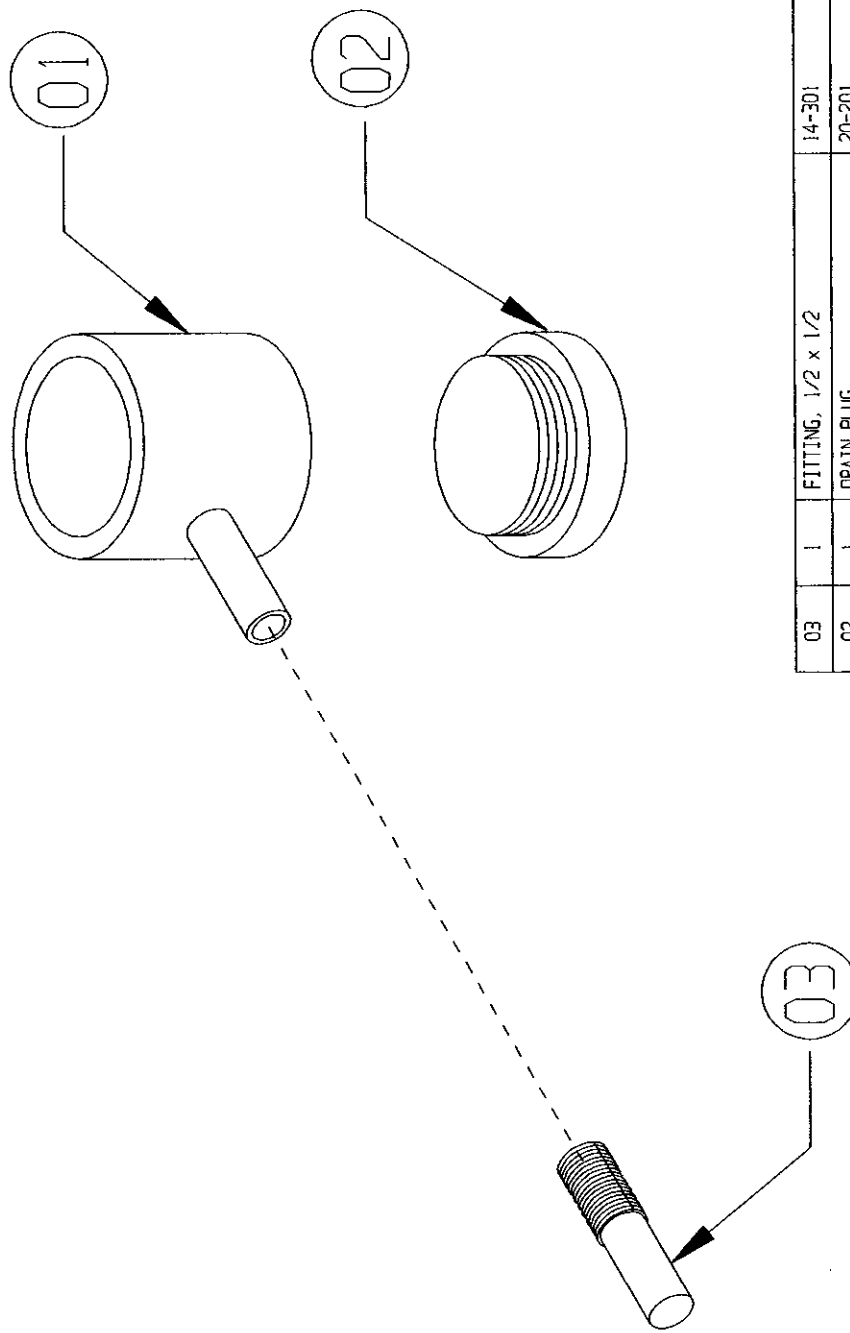


-5-

FIGURE 4

| ITEM | DESCRIPTION       | PART NO. | QTY. |
|------|-------------------|----------|------|
| 7    | FLEX HOSE ADAPTOR | A590     | 1    |
| 6    | RUBBER GROMMET    | 24-050   | 2    |
| 5    | AIR HOSE          | 18-076   | 5'   |
| 4    | MEDIA HOSE        | 18-084   | 5'   |
| 3    | HOSE CLAMP        | 21-031   | 2    |
| 2    | CAP               |          | 1    |
| 1    | SUMP              | A14086   | 1    |

A4098



|    |   |                    |        |
|----|---|--------------------|--------|
| 03 | 1 | FITTING, 1/2 x 1/2 | 14-301 |
| 02 | 1 | DRAIN PLUG         | 20-201 |
| 01 | 1 | MEDIA VALVE        | 20-200 |

ITEM NO. QTY. DESCRIPTION DWG NO. / MATERIAL  
**LARRY HESS & ASSOCIATES, INC.**  
 SALISBURY NORTH CAROLINA

DESCRIPTION: 2" MEDIA VALVE  
 MATERIAL:

|           |          |             |           |            |      |
|-----------|----------|-------------|-----------|------------|------|
| DATE:     | 06/28/01 | SCALE:      | 1/2" = 1" | JOB NO.:   | STD. |
| BY:       | LJF      | FUNCTIONAL: |           | REV. ASY.: |      |
| CHK'D BY: |          | DATE:       |           |            |      |

DRAWING NO.: A4098

**CONFIDENTIAL**

THE DISCLOSURES AND CONTENTS OF THIS DRAWING ARE CONFIDENTIAL AND ARE THE EXCLUSIVE PROPERTY OF BLAST-IT-ALL © A DIV. OF LARRY HESS & ASSOCIATES, INC. THIS DRAWING IS NOT TO BE COPIED OR REPRODUCED WHOLLY OR IN PART WITHOUT WRITTEN PERMISSION OF LARRY HESS & ASSOCIATES, INC.

| REV. | DESCRIPTION | BY | DATE |
|------|-------------|----|------|
|      |             |    |      |
|      |             |    |      |
|      |             |    |      |

-6-  
 FIGURE 5

LARRY HESS & ASSOCIATES

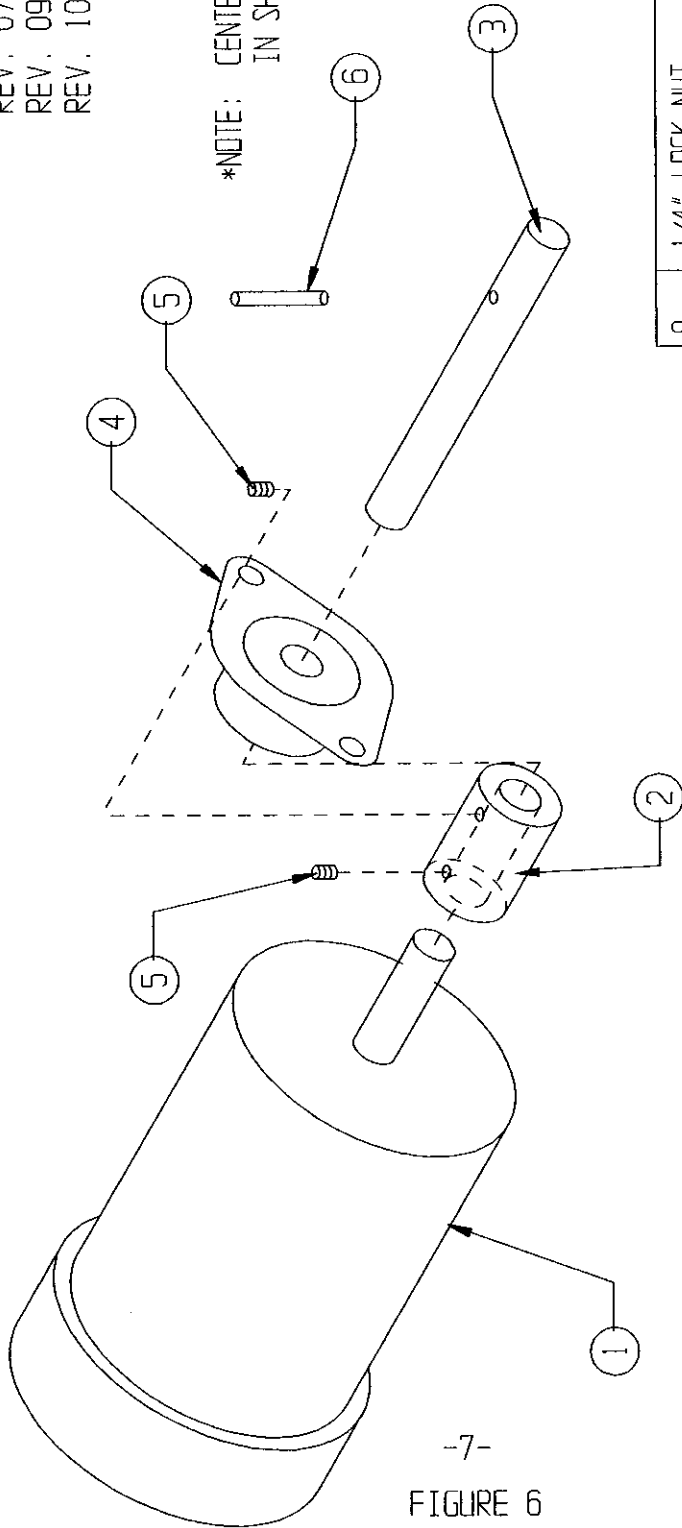
DESCRIPTION  
MOTOR ASSEMBLY

DATE  
1/6/93

ENGINEER  
KAS

DWG. NO.  
A14093

SCALE: 3/8"  
REV. 01/20/95 BY DEC  
REV. 07/16/96 BY DEC  
REV. 09/23/96 BY DEC  
REV. 10/13/99 BY DEC



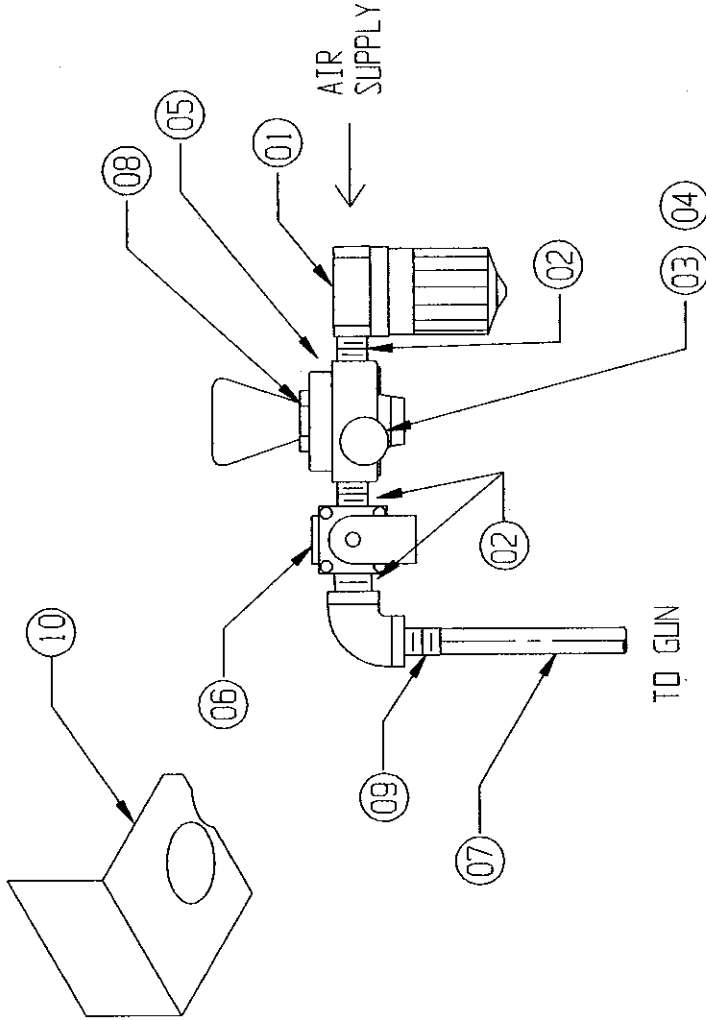
\*NOTE: ITEMS 7 & 8 ARE USED TO MOUNT MOTOR TO MOTOR MOUNTING BRACKET

|   |                             |          |      |
|---|-----------------------------|----------|------|
| 8 | 1/4" LOCK NUT               | 30-503   | 4    |
| 7 | BOLT 1/4" x 1" HEX HEAD     | 30-106   | 4    |
| 6 | 3/16" ROLL PIN 1-1/2" LG.   | 010656   | 1    |
| 5 | 1/4-28 ALLEN HEAD SETSCREW* |          | 2    |
| 4 | BEARING                     | 010219   | 1    |
| 3 | SHAFT                       | A14091   | 1    |
| 2 | COUPLING #6L016 (A14102)    | 010658   | 1    |
| 1 | MOTOR #3M126B               | 13-909   | 1    |
|   | ITEM DESCRIPTION            | PART NO. | QTY. |

-7-  
FIGURE 6



A7187



|    |   |                        |                  |
|----|---|------------------------|------------------|
| 10 | 1 | BRACKET                | 0105-13          |
| 09 | 1 | 1/2 x 1/2 BARB FITTING | 14-301           |
| 08 | 1 | LOCK RING              | 16-96SLR         |
| 07 | 1 | Ø 1/2" AIR HOSE        | 18-076 x 5' LONG |
| 06 | 1 | 1/2" SOLENOID          | 13-514           |
| 05 | 1 | 1/2" REGULATOR         | 16-965           |
| 04 | 1 | GAUGE, 1/4"            | 16-819           |
| 03 | 1 | 1/4" STREET ELBOW      | 002301           |
| 02 | 3 | 1/2" CLOSE NIPPLE      | 14-378           |
| 01 | 1 | FILTER 1/2"            | 16-966           |

| ITEM NO. | QTY. | DESCRIPTION | DWG NO./ MATERIAL |
|----------|------|-------------|-------------------|
|----------|------|-------------|-------------------|

LARRY HESS & ASSOCIATES, INC.,  
 SALISBURY NORTH CAROLINA

DESCRIPTION: LBT-3  
 AIR CONTROLS

MATERIAL:

|              |          |        |        |               |       |
|--------------|----------|--------|--------|---------------|-------|
| DATE:        | 05/25/00 | SCALE: | N.T.S. | JOB NO.:      |       |
| CHK'D BY:    | LJF      | DATE:  |        | FRONTAL VIEW: |       |
|              |          |        |        | DEPNL. VIEW:  |       |
|              |          |        |        | ISOLAR VIEW:  |       |
| DRAWING NO.: |          |        |        |               | A7187 |

**CONFIDENTIAL**

THE DISCLOSURES AND CONTENTS OF THIS DRAWING ARE CONFIDENTIAL AND ARE THE EXCLUSIVE PROPERTY OF BLAST-TT-ALL © A DIV. OF LARRY HESS & ASSOCIATES, INC.. THIS DRAWING IS NOT TO BE COPIED OR REPRODUCED WHOLLY OR IN PART WITHOUT WRITTEN PERMISSION OF LARRY HESS & ASSOCIATES, INC..

-8-  
 FIGURE 7

| REV. | DESCRIPTION | BY  | DATE     |
|------|-------------|-----|----------|
| 1    | ADD 3 ITEMS | LJF | 06/27/01 |

LARRY HESS & ASSOCIATES

DESCRIPTION

PRODUCTION GUN ASSEMBLY

DATE

12/21/92

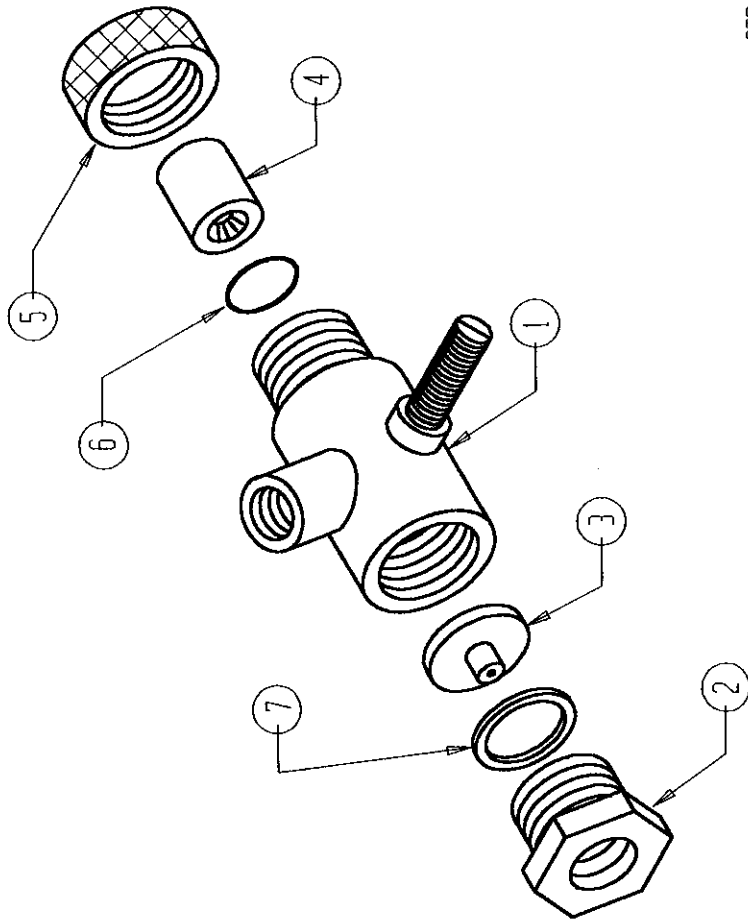
ENGINEER

KAS

ENG. NO.

A9063

REV. BY DEC 10/28/99  
 REV. BY LJF 05/30/00



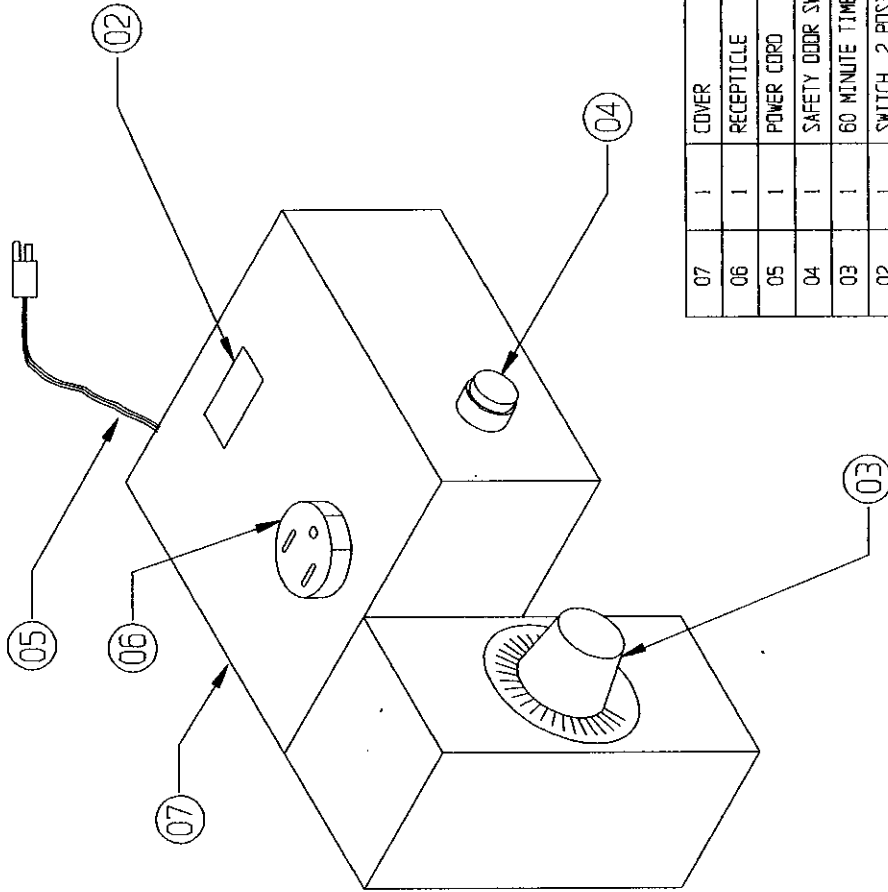
\*STD.

\*STD.

| ITEM | DESCRIPTION               | QTY | PART NO. |
|------|---------------------------|-----|----------|
| 7    | SEAL                      | 1   | 20-033   |
| 6    | "O" RING SEAL             | 1   | 20-053   |
| 5    | NOZZLE NUT HOLDING        | 1   | 20-054   |
| 4    | NOZZLE CARBIDE 7/16       | 1   | 20-087   |
| 4    | NOZZLE CARBIDE 6/16       | 1   | 20-086   |
| 4    | NOZZLE CARBIDE 5/16       | 1   | 20-085   |
| 4    | NOZZLE CARBIDE 4/16       | 1   | 20-084   |
| 3    | ORIFICE 7/32              | 1   | 20-037   |
| 3    | ORIFICE 6/32              | 1   | 20-036   |
| 3    | ORIFICE 5/32              | 1   | 20-035   |
| 3    | ORIFICE 4/32              | 1   | 20-034   |
| 2    | FITTING ORIFICE HOLDING   | 1   | 20-032   |
| 1    | GUN HOUSING (RIGHT MOUNT) | 1   | 20-023   |
|      | DESCRIPTION               | QTY | PART NO. |

FIGURE 8

A5147



| ITEM NO. | QTY. | DESCRIPTION        | DWG. NO. / MATERIAL |
|----------|------|--------------------|---------------------|
| 07       | 1    | COVER              |                     |
| 06       | 1    | RECEPTACLE         |                     |
| 05       | 1    | POWER CORD         | 13-551              |
| 04       | 1    | SAFETY ODOR SWITCH | 13-512              |
| 03       | 1    | 60 MINUTE TIMER    | 001371              |
| 02       | 1    | SWITCH, 2 POSITION | 13-655              |
| 01       | 1    |                    |                     |

LARRY HESS & ASSOCIATES, INC.  
SALISBURY NORTH CAROLINA

DESCRIPTION: CONTROL ARRANGEMENT  
LBT-3

MATERIAL:

| REV. | DESCRIPTION | BY | DATE |
|------|-------------|----|------|
|      |             |    |      |
|      |             |    |      |
|      |             |    |      |
|      |             |    |      |

CONFIDENTIAL

THE DISCLOSURE AND CONTENTS OF THIS DRAWING ARE CONFIDENTIAL AND ARE THE EXCLUSIVE PROPERTY OF BLAST-IT-ALL © A DIV. OF LARRY HESS & ASSOCIATES, INC. THIS DRAWING IS NOT TO BE COPIED OR REPRODUCED WHOLLY OR IN PART WITHOUT WRITTEN PERMISSION OF LARRY HESS & ASSOCIATES, INC.

| DATE:    | SCALE:     | JOB NO.: | STD.   |
|----------|------------|----------|--------|
| 06/28/01 | 1/4" = 1"  |          |        |
| DATE:    | FRACTIONS: | DECIMAL: | ANGLE: |
|          |            |          |        |

DRAWING NO.: A5147

-10-  
FIGURE 9

# LARRY HESS & ASSOCIATES

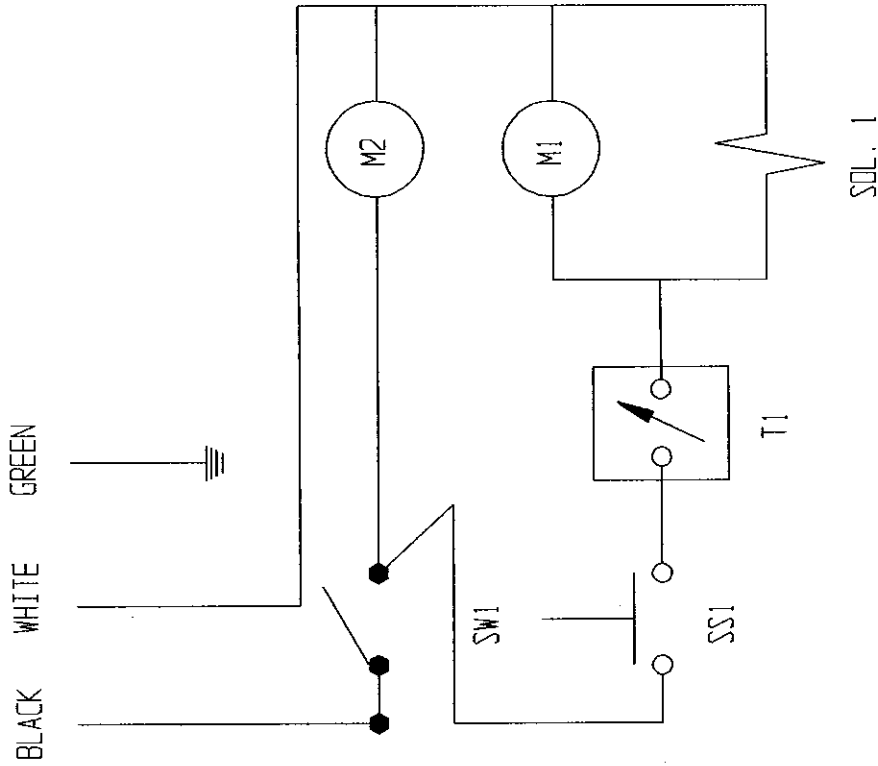
DESCRIPTION  
WIRING DIAGRAM

DATE  
1/8/92

ENGINEER  
KAS

DWG. NO.  
A8077

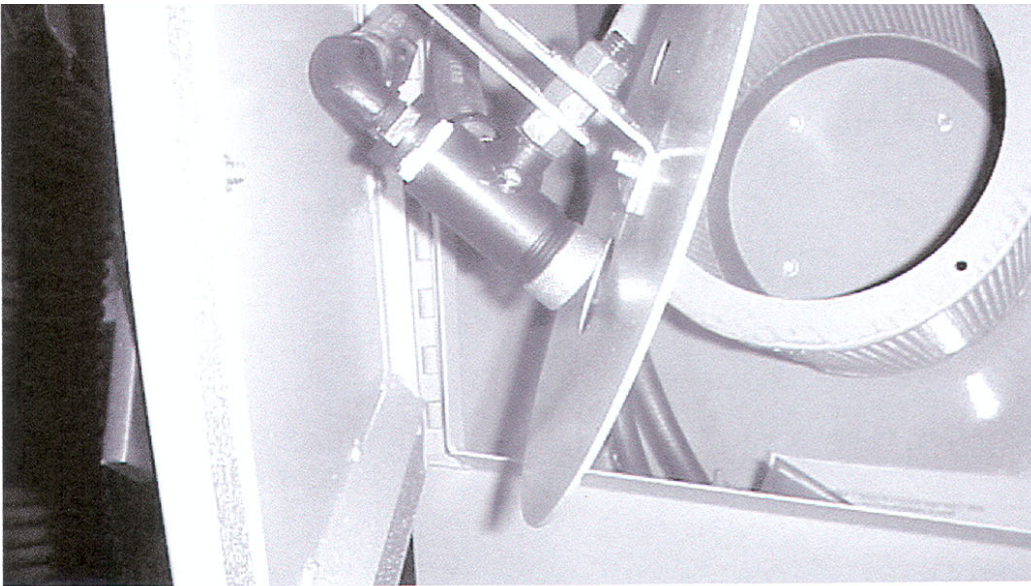
REV. BY DEC 07/07/95  
 REV. BY DEC 10/05/95  
 REV. BY DEC 05/14/01  
 REV. BY DEC 11/26/02



| ITEM   | DESCRIPTION        | PART NO. | QTY. |
|--------|--------------------|----------|------|
| SW1    | POWER SWITCH       | 13-655   | 1    |
| M2     | RECLAIMER MOTOR    | 13-400   | 1    |
| SOL. 1 | SOLENOID           | 13-513   | 1    |
| M1     | DRIVE MOTOR        | 13-909   | 1    |
| T1     | 60 MIN. TIMER      | 001371   | 1    |
| SSI    | SAFETY ODOR SWITCH | 13-512   | 1    |

-11-  
FIGURE 10

WIRING DIAGRAM FOR 10" TUMBLE BASKET BLASTER



## WARRANTY

Larry Hess & Associates, Inc. Warrants to the original purchaser the merchandise sold to be free from defects in material and workmanship under normal use and service for a period of one (1) year. Upon prompt notification by the buyer, to LHA, components that are determined by LHA to be defective will be repaired or replaced at no additional charge, F.O.B. our factory.

Manufacturer shall have the right to inspect prior to replacing all merchandise in question.

This warranty does not apply to parts that are directly involved in the blasting operation. Example: gun, gun parts, viewing window, hose, gloves, etc.

Manufacturer shall not be required to pay any removal or installation charges whatsoever under this warranty.

Manufacturer shall not be liable for prospective profits, special or consequential damages, nor shall any recovery of any kind against manufacturer be greater in amount than the cost of repairs of defects in workmanship.

This warranty does not apply to damage caused by accidents, damage in transit, alterations by unauthorized personnel, abuse or damage by flood, fire, or acts of God, nor by artificially generated electric currents or any other cause whatsoever except defects in material or factory workmanship.

In all cases, defective parts must be returned to Larry Hess & Associates, Inc. before credit is issued.

If genuine BLAST-IT-ALL® replacement parts are not used, the warranty is void.

This warranty is in lieu of all other warranties expressed or implied and releases Larry Hess & Associates, Inc. of all other obligations and liabilities whatsoever. This warranty neither assumes nor authorizes any person to assume any obligation other than those specified by this warranty.

## WARNING

**DO NOT USE *SAND*. SAND WILL CAUSE SILICA DUST, WHICH IS THE CAUSE OF SILICOSIS DISEASE, A CONDITION OF MASSIVE FIBROSIS OF THE LUNGS. *THIS STATEMENT INDICATES POTENTIAL PERSONNEL HAZARD. FAILURE TO COMPLY WITH THESE INSTRUCTIONS MAY RESULT IN PERSONAL INJURY.***

BLAST-IT-ALL®  
Larry Hess & Associates, Inc.  
Airport Industrial Park  
185 Piper Lane  
P.O. Box 1615  
Salisbury, NC 28145-1615