

# BLAST-IT-ALL®

LARRY HESS & ASSOCIATES, INC.

SALISBURY, NC 28147

TOLL FREE: (800) 535-2612 ☎ FAX: (704) 638-9311

## STRIP 'N' VAC

### PLASTIC MEDIA PAINT STRIPPER

- HI - STATIC VACUUM RECOVERY
- 120 VOLT ELECTRICAL SERVICE
- 25 FT. VACUUM RECOVERY HOSE
- NON - CLOG PICK UP WAND
- PULSE JET CARTRIDGE CLEANING
- MAGNEHELIC GAUGE / FILTER MONITOR
- QUICK RECOVERY
- DEBRIS SCREEN
- 10 CU. FT. STORAGE HOPPER
- DEADMAN CONTROLS
- ADJUSTABLE MEDIA FLOW VALVE
- 25 FT. BLAST HOSE WITH 5 / 16 CARBIDE NOZZLE
- 90 CFM @ 60 PSI REQUIRED 25 HP (5 / 16 NOZZLE)



**BLAST**  
&  
**RECOVERY**

# STRIP-N-VAC™

LARRY HESS AND ASSOCIATES, INC.  
BLAST-IT-ALL®  
P.O. BOX 1615  
SALISBURY, NC 28145

[WWW.BLAST-IT-ALL.COM](http://WWW.BLAST-IT-ALL.COM)

**MANUAL NUMBER: 507**

## TABLE OF CONTENTS

<i>PAGE</i>	<i>FIGURE</i>	
1	-	<i>SET-UP INSTRUCTIONS</i>
1	-	<i>OPERATING INSTRUCTIONS</i>
2	1	<i>RECLAIM &amp; HOPPER</i>
3	2	<i>PICK-UP TUBE</i>
4	3	<i>1 CU FT PRESSURE SYSTEM</i>
5	4	<i>3 CU FT PRESSURE SYSTEM</i>
6	5	<i>DUST COLLECTOR</i>
7	6	<i>SCREEN DRAWER</i>
8	7	<i>PULSE HEADER</i>
9	8	<i>FILTER CARTRIDGE</i>
10	9	<i>DUST COLLECTOR STAND</i>
11	10	<i>ELECTRICAL DIAGRAM</i>
12	-	<i>MACHINE WARRANTY</i>
13	-	<i>WARRANTY REGISTRATION FORM</i>

## **WARNING**

**DO NOT USE SAND.** SAND WILL CAUSE SILICA DUST, WHICH IS THE CAUSE OF SILICOSIS DISEASE, A CONDITION OF MASSIVE FIBROSIS OF THE LUNGS. THIS STATEMENT INDICATES POTENTIAL PERSONNEL HAZARD.

**FAILURE TO COMPLY WITH THESE INSTRUCTIONS  
MAY RESULT IN PERSONAL INJURY.**

WEBSITE CONCERNING SILICOSIS:

[http://www.osha.gov/Silica/IT69D\\_1.html](http://www.osha.gov/Silica/IT69D_1.html)

# STRIP-N-VAC™

## SET-UP INSTRUCTIONS

\*\*\* READ BEFORE OPERATING EQUIPMENT \*\*\*

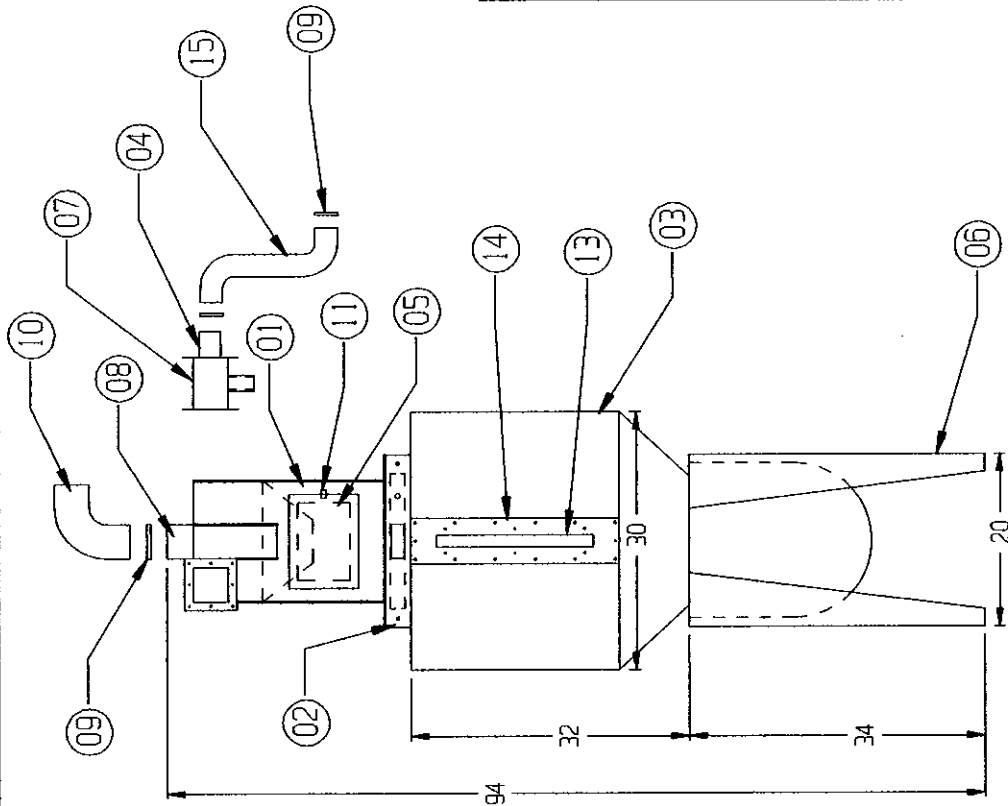
1. Remove equipment from pallets.
2. Connect compressed air to air filter or pipe string.
3. Lift and attach reclaim to debris screen flange.
4. Connect smaller flex hose to side inlet on reclaim and pick-up tube.
5. Connect 5" flex hose from top of reclaim to inlet on dust collector.
6. Connect compressed air line to air header / regulator on dust collector pulse control.
7. Plug dust collector supply cord into dedicated 120 V receptacle.

## OPERATING INSTRUCTIONS

\*\*\* READ BEFORE OPERATING EQUIPMENT \*\*\*

1. **To Load Media:**
  - A. Turn Dust Collector on.
  - B. Place media pick-up tube in drum of media.
  - C. Fill system until media is at site gauge on hopper.
  
2. **To Blast:**
  - A. Turn on compressed air.
  - B. Have operator suit-up with protective clothing.
  - C. Grasp nozzle and point away from operator.
  - D. Depress (Safety Deadman).
  - E. Adjust air regulator 40 - 60 PSI.
  - F. Adjust media valve as needed for proper media flow.

**\* THERE SHOULD BE A SMALL AMOUNT OF MEDIA AND A LARGER AMOUNT OF COMPRESSED AIR COMING FROM NOZZLE.**



ITEM NO.	QTY.	DESCRIPTION	DWG. NO. / MATERIAL
16		CUT SHEET	A1044
15	25'	2.5" VACUUM HOSE	19-090-25
14	1	SIGHT GLASS FLANGE	B2123-3
13	1	SIGHT GLASS	010829
12	1	RECLINER BAFFLE	A1007
11	1	DOOR LATCH & CATCH	15-728
10	5'	FLEX HOSE (4")	19-092
09	4	CLAMP	21-034
08	1	TOP OUTLET	A1047
07	1	PURGE ADAPTOR	B1005
06	4	LEGS (34")	A1124-3
05	1	DOOR & GASKET	11-702
04	1	2.5" INLET	A1001-6
03	1	STORAGE HOPPER 30Ø	B1225
02	1	TRASH SCREEN	A267
01	1	400 CFM REC. W/ SD. BOTTOM FLANGE	A1034
ITEM NO. QTY. DESCRIPTION			DWG. NO. / MATERIAL

LARRY HESS & ASSOCIATES, INC.  
SALTSBURY, NORTH CAROLINA

DESCRIPTION: 400 REC. W/PRESSURE POT

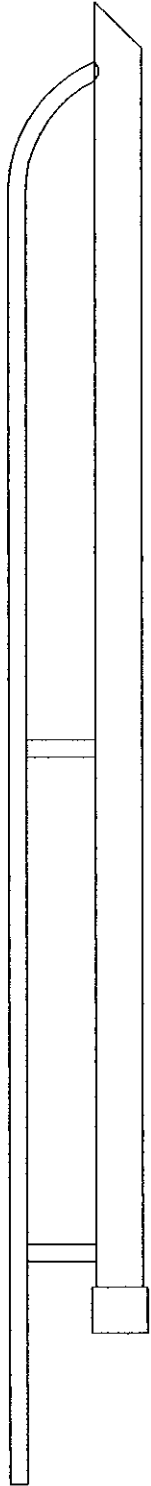
MATERIAL: PER DWG.

SCALE: 3/64" = 1"	JOB NO:
DATE: 10/09/02	DATE: 10/09/02
DRAWN BY: D. CLINTON	CHECKED BY: D. CLINTON
DATE: 10/09/02	DATE: 10/09/02
PROJECT: 1043	REV. ASSY: 1

DRAWING NO.: A1043

NO.	REVISION	BY	DATE	NO.	REVISION	BY	DATE

A7195



LARRY HESS & ASSOCIATES, INC.  
 SALISBURY NORTH CAROLINA

DESCRIPTION: MEDIA PICKUP TUBE  
 VACUUM D.C. MATERIAL: PER DWG.

DATE: 11/29/01	SCALE: 1/12"=1"	JOB NO.	STD.
DRAWN BY: L.J.F.	PROJECT/WORK CENTER:	REV. NO.	REV. DATE:
DATE:	DATE:	DATE:	DATE:

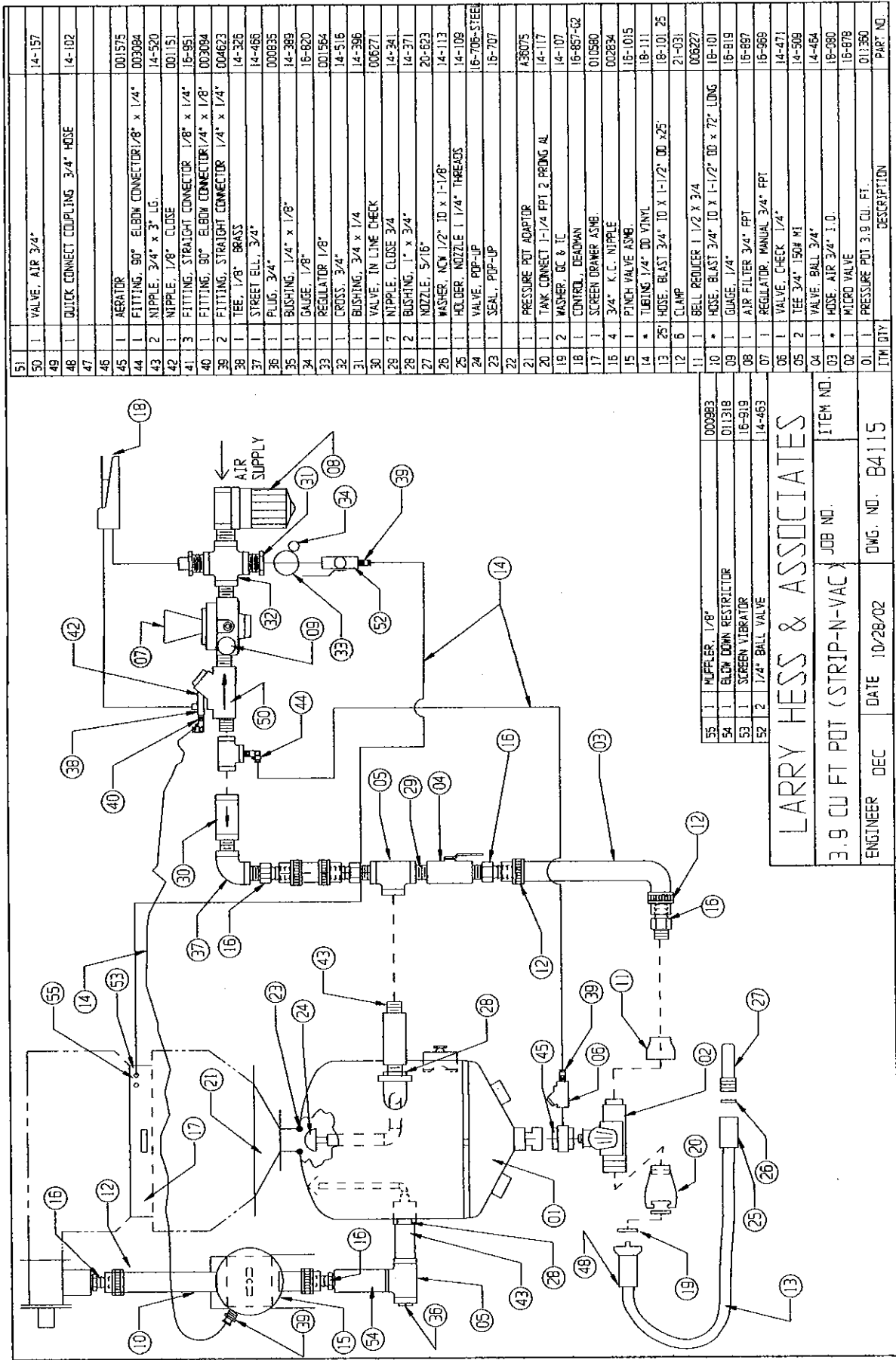
DRAWING NO.: A7195

**CONFIDENTIAL**

THE DISCLOSURE AND CONTENTS OF THIS DRAWING ARE  
 CONFIDENTIAL AND ARE THE EXCLUSIVE PROPERTY OF  
 BLAST-IT-ALL® A DIV. OF LARRY HESS & ASSOCIATES, INC.  
 THIS DRAWING IS NOT TO BE COPIED OR REPRODUCED WHOLLY  
 OR IN PART WITHOUT WRITTEN PERMISSION OF  
 LARRY HESS & ASSOCIATES, INC.

REV.	DESCRIPTION	BY	DATE

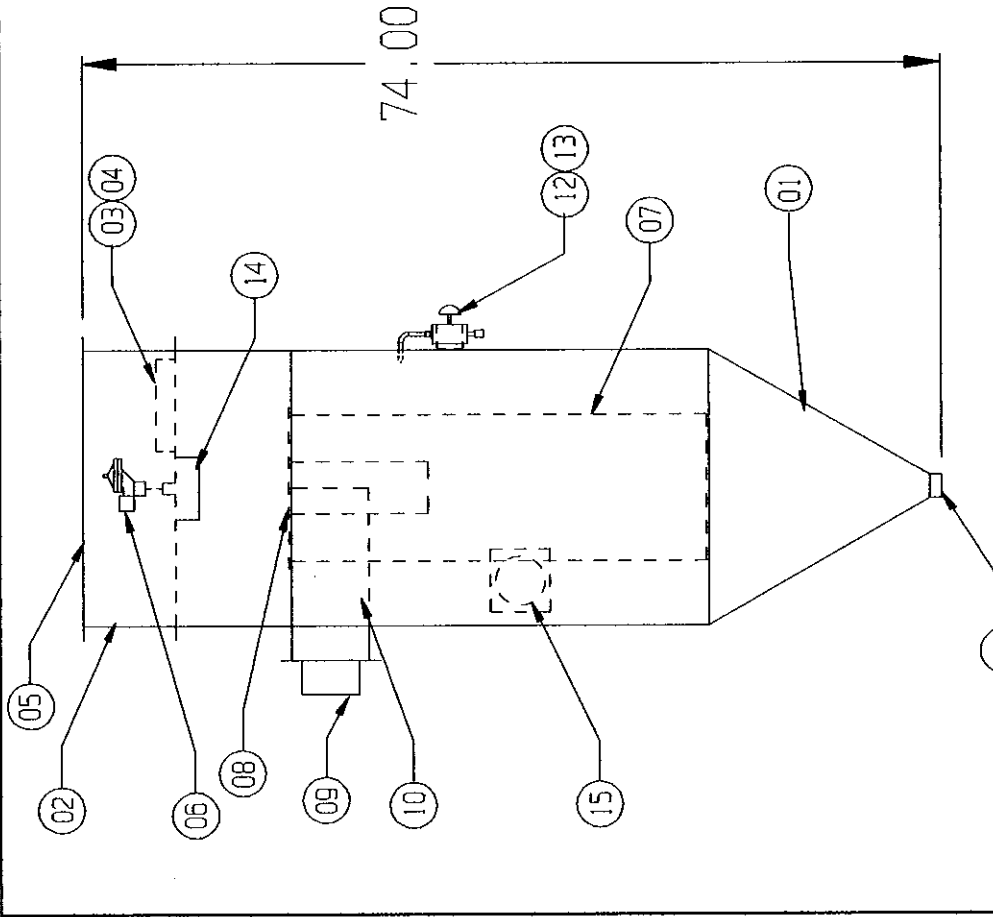




ITEM NO.	DESCRIPTION	PART NO.
000983	MUFFLER, 1/8"	14-157
011318	BLOW DOWN RESTRICTOR	14-182
16-919	SCREEN VIBRATOR	001575
14-463	1/4" BALL VALVE	003094
000983	MUFFLER, 1/8"	14-520
011318	BLOW DOWN RESTRICTOR	001151
16-919	SCREEN VIBRATOR	15-951
14-463	1/4" BALL VALVE	004623

LARRY HESS & ASSOCIATES

ITEM NO. \_\_\_\_\_  
 JOB NO. \_\_\_\_\_  
 3.9 CU FT POT (STRIP-N-VAC)  
 DATE 10/28/02  
 DWG. NO. B4115  
 ENGINEER DEC



ITEM NO.	QTY	DESCRIPTION	DWG. NO. / MATERIAL
17		CUT SHEET	A2641-1
16	1	CARTRIDGE TRIANGULAR HOLDER	A2547
15	1	MAGNETIC GALE	004457-10
14	1	AIR DIFFUSER	A2633
13	1	SHAKER VALVE BRACKET	A2612
12	1	SHAKER VALVE, 1/8"	16-830
11	1	2" PIPE CAP	010212
10	1	BAFFLE	A1203-6
09	1	INLET	11-705
08	1	CARTRIDGE CAP	A2613
07	1	CARTRIDGE	006870
06	1	PULSE SOLENOID VALVE, 1"	005410
05	1	TOP COVER ASS'Y.	
04	6	MOTOR HOLDER STRAPS	A2605-7
03	3	MOTOR, 120V, 60/50 Hz, 6.9 AMP.	13-200
02	1	TOP MOTOR CHAMBER ASS'Y.	B2201
01	1	VACUUM DUST COLLECTOR BODY ASS'Y.	B2202
			DWG. NO. / MATERIAL

LARRY HESS & ASSOCIATES, INC.  
SALISBURY, NORTH CAROLINA

DESCRIPTION:		MATERIAL:	
24" Ø VACUUM DUST COLLECTOR		PER DWG.	
DRAWN BY:	DATE:	SCALE:	JOB NO.:
DEC	02/12/03	1/16" = 1"	
CHECKED BY:	DATE:	FUNCTIONAL DESIGNER:	VERT. ASS'Y.:

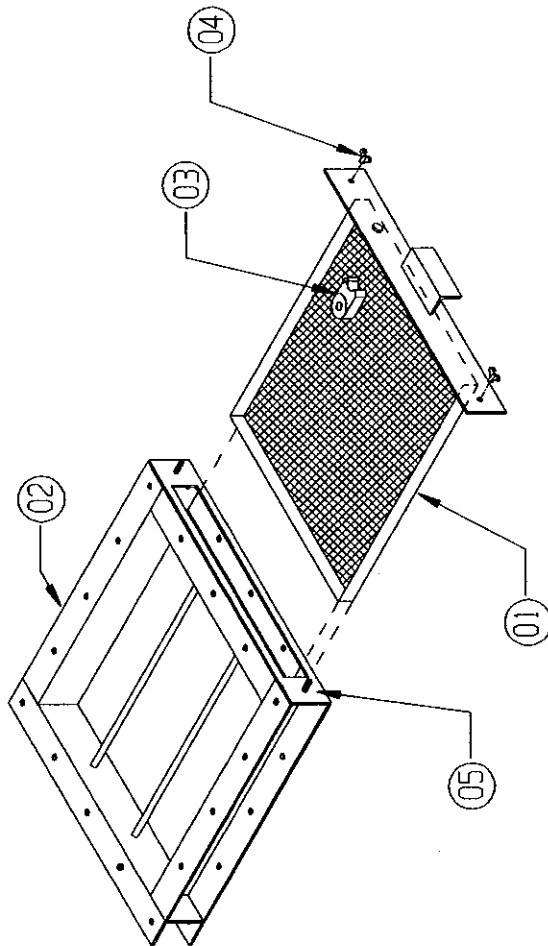
DRAWING NO.: A2640-N

**CONFIDENTIAL**

THE DISCLOSURES AND CONTENTS OF THIS DRAWING ARE CONFIDENTIAL AND ARE THE EXCLUSIVE PROPERTY OF BLAST-JT-ALL © A DIV. OF LARRY HESS & ASSOCIATES, INC.. THIS DRAWING IS NOT TO BE COPIED OR REPRODUCED WHOLLY OR IN PART WITHOUT WRITTEN PERMISSION OF LARRY HESS & ASSOCIATES, INC..

REV.	DESCRIPTION	BY	DATE





07	CUT SHEET	A271
05	3 FT. 1/8" x 3/4" GASKET	24-021
04	2 1/4" WING NUT	30-510
03	1 VIBRATOR (OPTIONAL)	16-919
02	1 TRASH SCREEN HOUSING	A268
01	1 REPLACEMENT DRAWER (1/4" HOLES)	010581-1
01	1 REPLACEMENT DRAWER (3/16" HOLES)	010581
ITEM NO.	QTY.	DESCRIPTION
		DWG. NO. / MATERIAL

LARRY HESS & ASSOCIATES, INC.  
SALISBURY NORTH CAROLINA

DESCRIPTION: TRASH SCREEN ASM.  
010580

DATE:	1/19/84	SCALE:	3/32" = 1"	JOB NO.:	STD.
S.K.:		REV.:		REV.:	
DATE:		DATE:		DATE:	

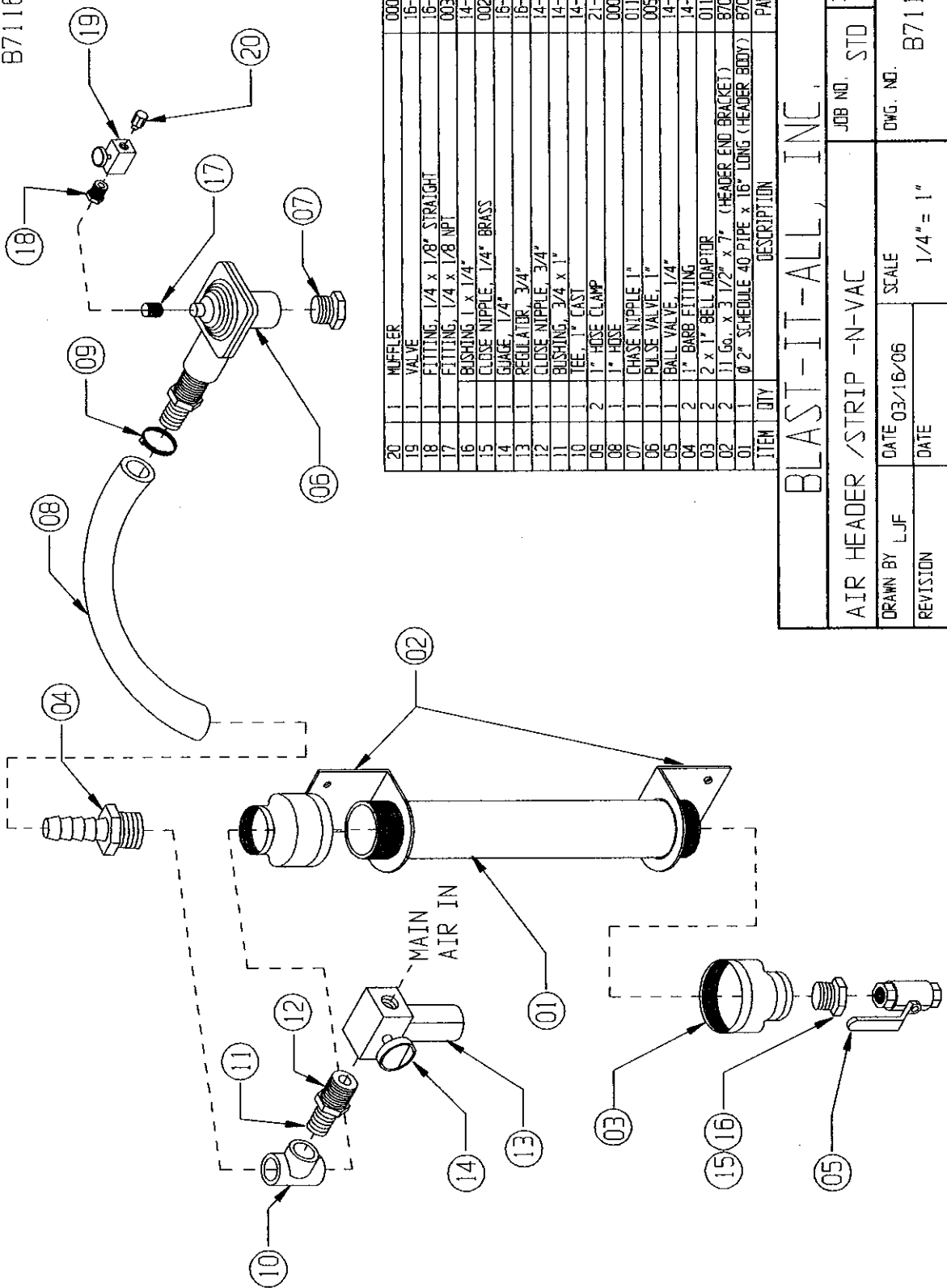
DRAWING NO.: A267

**CONFIDENTIAL**

THE DISCLOSURES AND CONTENTS OF THIS DRAWING ARE CONFIDENTIAL AND ARE THE EXCLUSIVE PROPERTY OF BLAST-JT-ALL A DIV. OF LARRY HESS & ASSOCIATES, INC.. THIS DRAWING IS NOT TO BE COPIED OR REPRODUCED WHOLLY OR IN PART WITHOUT WRITTEN PERMISSION OF LARRY HESS & ASSOCIATES, INC..

REV.	DESCRIPTION	BY	DATE
#1	MADE MANUAL DWG.	DEC	5/28/03

B7116-M

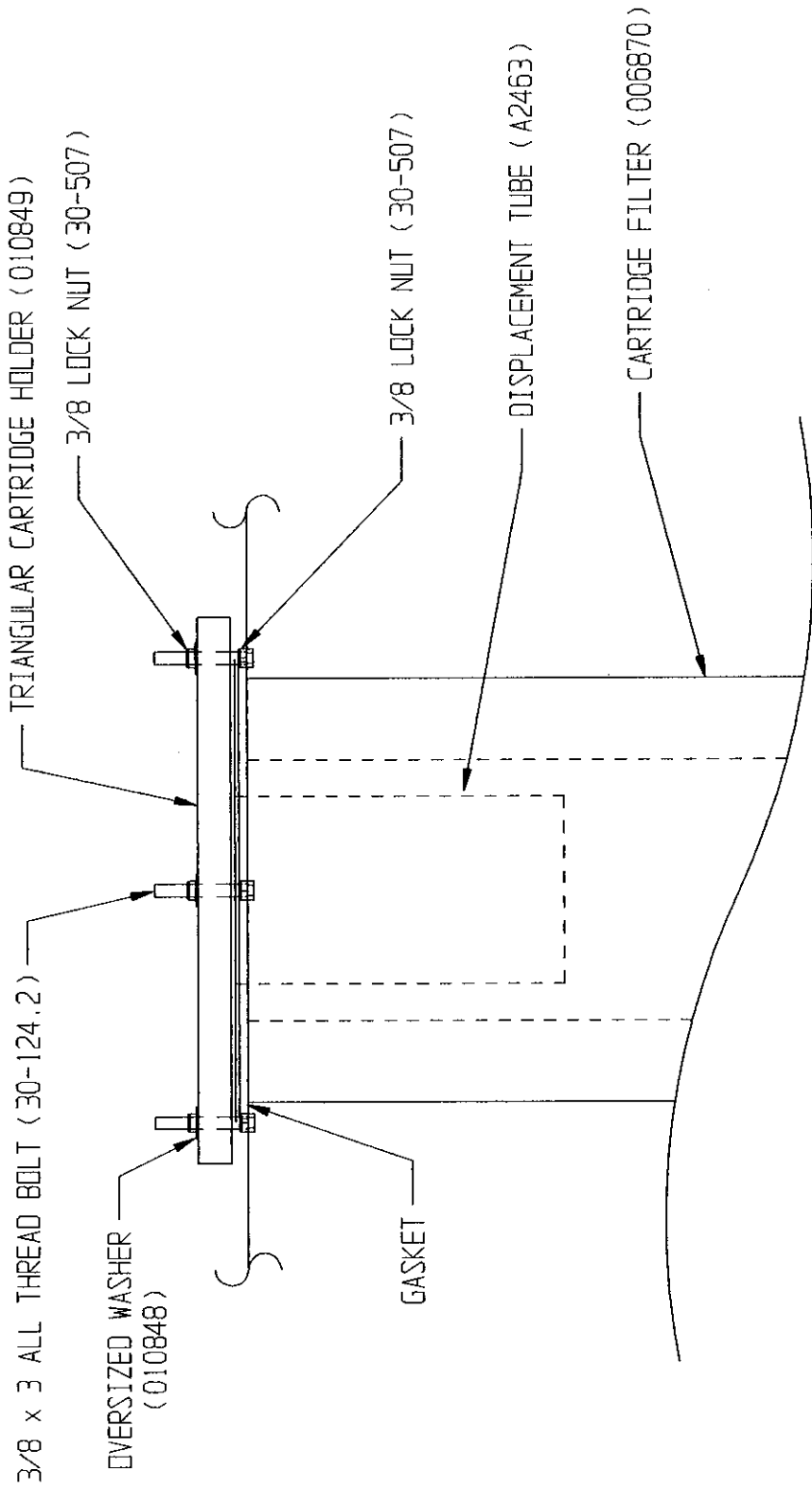


ITEM	QTY	DESCRIPTION	PART NO.
20	1	MUFFLER	000983
19	1	VALVE	16-830
18	1	FITTING, 1/4 x 1/8" STRAIGHT	16-951
17	1	FITTING, 1/4 x 1/8 NPT	003084
16	1	BUSHING, 1 x 1/4"	14-411
15	1	CLOSE NIPPLE, 1/4" BRASS	002405
14	1	GAUGE, 1/4"	16-819
13	1	REGULATOR, 3/4"	16-969
12	1	CLOSE NIPPLE, 3/4"	14-341
11	1	BUSHING, 3/4 x 1"	14-371
10	1	TEE, 1" CAST	14-359
09	2	1" HOSE CLAMP	21-032
08	1	1" HOSE	000831
07	1	CHASE NIPPLE, 1"	011220
06	1	PULSE VALVE, 1"	005410
05	1	BALL VALVE, 1/4"	14-463
04	2	1" BARB FITTING	14-355
03	2	2 x 1" BELL ADAPTOR	011221
02	2	1 1/2" x 3 1/2" x 7" (HEADER END BRACKET)	87093-02
01	1	Ø 2" SCHEDULE 40 PIPE x 16" LONG (HEADER BODY)	87093-01

**BLAST-IT-ALL, INC.**

JOB NO. STD		ITEM NO.
AIR HEADER / STRIP -N-VAC		
DRAWN BY L.J.F.	DATE 03/16/06	SCALE 1/4" = 1"
REVISION	DATE	DWG. NO. B7116-M

A2509

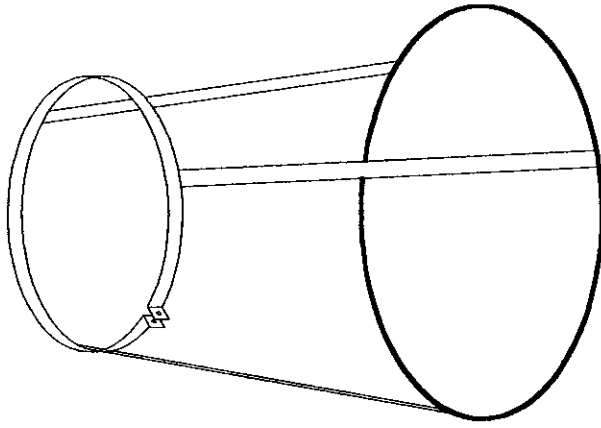


LARRY HESS & ASSOCIATES, INC.  
SALISBURY, NORTH CAROLINA

DESCRIPTION:		MATERIAL:	
RPJ CARTRIDGE INSTALLATION		PER DWG.	
DATE:	SCALE:	JOB NO.:	REV. ASSY.:
DEC 06/02/95	3/16" = 1"		
CHK'D BY:	FRACTIONAL:		
	DECIMAL:		
	INCHES:		
DRAWING NO.:		A2509	

CONFIDENTIAL	
THE DISCLOSURES AND CONTENTS OF THIS DRAWING ARE CONFIDENTIAL AND ARE THE EXCLUSIVE PROPERTY OF BLAST-IT-ALL® A DIV. OF LARRY HESS & ASSOCIATES, INC. THIS DRAWING IS NOT TO BE COPIED OR REPRODUCED WHOLLY OR IN PART WITHOUT WRITTEN PERMISSION OF LARRY HESS & ASSOCIATES, INC.	
REV.	DESCRIPTION
1	ADDED DISP. TUBE
DEC 02/03/97	BY DATE

A2643



LARRY HESS & ASSOCIATES, INC.  
 SALISBURY, NORTH CAROLINA

DESCRIPTION:		MATERIAL:	
VACUUM DUST COLLECTOR STAND		PER DWG.	
DATE:	SCALE:	JOB NO.:	DRAWING NO.:
10/28/02	1/16" = 1"		A2643
DATE:	DATE:	DATE:	DATE:

**CONFIDENTIAL**

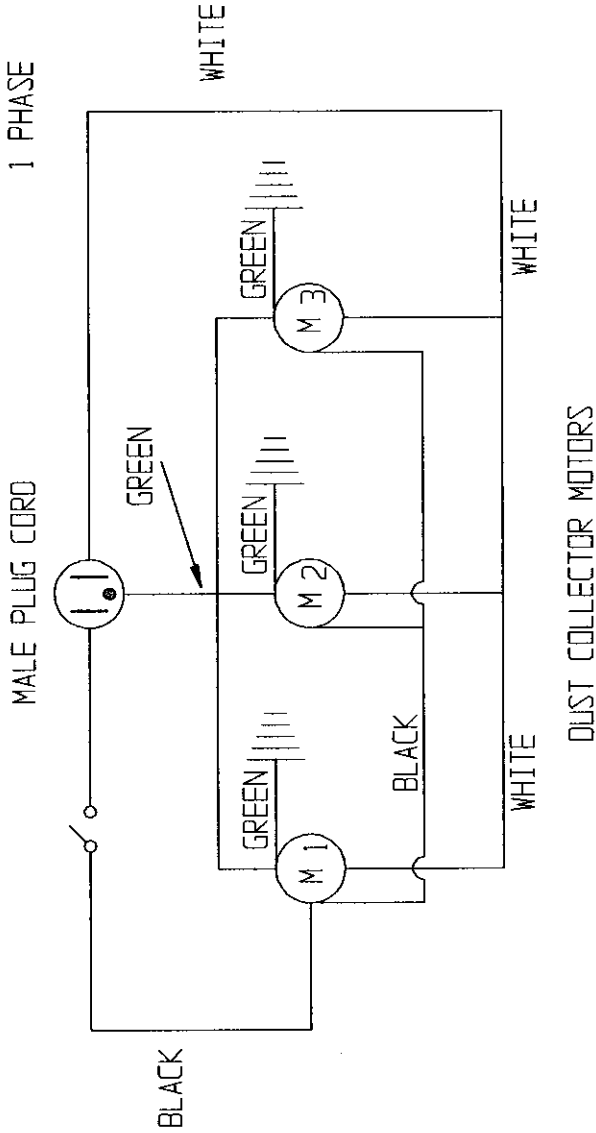
THE DISCLOSURES AND CONTENTS OF THIS DRAWING ARE CONFIDENTIAL AND ARE THE EXCLUSIVE PROPERTY OF BLAST-IT-ALL® A DIV. OF LARRY HESS & ASSOCIATES, INC. THIS DRAWING IS NOT TO BE COPIED OR REPRODUCED WHOLLY OR IN PART WITHOUT WRITTEN PERMISSION OF LARRY HESS & ASSOCIATES, INC.

REV.	DESCRIPTION	BY	DATE

A5162

ELECTRICAL DIAGRAM

120 VOLT POWER  
50/60 HZ  
1 PHASE



**CONFIDENTIAL**

THE DISCLOSURES AND CONTENTS OF THIS DRAWING ARE  
CONFIDENTIAL AND ARE THE EXCLUSIVE PROPERTY OF  
BLAST-IT-ALL © A DIV. OF LARRY HESS & ASSOCIATES, INC.  
THIS DRAWING IS NOT TO BE COPIED OR REPRODUCED WHOLLY  
OR IN PART WITHOUT WRITTEN PERMISSION OF  
LARRY HESS & ASSOCIATES, INC.

LARRY HESS & ASSOCIATES, INC.  
SALISBURY NORTH CAROLINA

DESCRIPTION: ELECTRICAL SCHEMATIC  
STRIP-N-VAC

MATERIAL:

PER DWG.

DATE:	SCALE:	JOB NO.:	STD.
10/29/02	NONE		
DATE:	FRACTIONAL:	REV. ASBY.:	

DRAWING NO.:

A5162

REV.	DESCRIPTION	BY	DATE

## WARRANTY

Larry Hess & Associates, Inc. Warrants to the original purchaser the merchandise sold to be free from defects in material and workmanship under normal use and service for a period of one (1) year. Upon prompt notification by the buyer, to LHA, components that are determined by LHA to be defective will be repaired or replaced at no additional charge, F.O.B. our factory.

Manufacturer shall have the right to inspect prior to replacing all merchandise in question.

This warranty does not apply to parts that are directly involved in the blasting operation. Example: gun, gun parts, viewing window, hose, gloves, etc.

Manufacturer shall not be required to pay any removal or installation charges whatsoever under this warranty.

Manufacturer shall not be liable for prospective profits, special or consequential damages, nor shall any recovery of any kind against manufacturer be greater in amount than the cost of repairs of defects in workmanship.

This warranty does not apply to damage caused by accidents, damage in transit, alterations by unauthorized personnel, abuse or damage by flood, fire, or acts of God, nor by artificially generated electric currents or any other cause whatsoever except defects in material or factory workmanship.

In all cases, defective parts must be returned to Larry Hess & Associates, Inc. before credit is issued.

If genuine BLAST-IT-ALL® replacement parts are not used, the warranty is void.

This warranty is in lieu of all other warranties expressed or implied and releases Larry Hess & Associates, Inc. of all other obligations and liabilities whatsoever. This warranty neither assumes nor authorizes any person to assume any obligation other than those specified by this warranty.

## WARNING

**DO NOT USE SAND. SAND WILL CAUSE SILICA DUST, WHICH IS THE CAUSE OF SILICOSIS DISEASE, A CONDITION OF MASSIVE FIBROSIS OF THE LUNGS. THIS STATEMENT INDICATES POTENTIAL PERSONNEL HAZARD. FAILURE TO COMPLY WITH THESE INSTRUCTIONS MAY RESULT IN PERSONAL INJURY.**

BLAST-IT-ALL®  
Larry Hess & Associates, Inc.  
Airport Industrial Park  
185 Piper Lane  
P.O. Box 1615  
Salisbury, NC 28145-1615