



# LBT-3

The Blast-It-All® LTB-3, is a stand alone, tumble basket that offers batch processing for smaller parts. This method of batch tumble blasting offers a continuous air blasting for up to fifteen lbs. of small parts. Batch processing offers a great return on investment, because of the labor saving.

Designed for simple operation: load the parts, close and latch door, and set timer. This unit comes standard with a #4 blast gun including a tungsten carbide nozzle. Our #4 gun will require 16 CFM, when the pressure regulator is set to 70 PSI. The door has a plate, that will cover the basket when the door is closed, to help prevent parts from being blown out of the basket. The LTB-3 can be used with GLASS BEADS OR ALUMINUM OXIDE. This system comes standard with a 300 CFM reclaim with a dust bag after filter.



**BLAST-IT-ALL®**  
Salisbury, NC 28145  
(800) 535-2612  
[www.blast-it-all.com](http://www.blast-it-all.com)  
[sales@blast-it-all.com](mailto:sales@blast-it-all.com)



# LBT-3

## Includes:

**Motor:** 1/2 HP, 120 volts, 11 amp, 3450 rpm, switch controlled.

**Reclaimer:** High performance 300 CFM cyclone type reclaimer separates good media from dust and by-products.

**Dust Collector:** Cotton sateen dust bag collects dust from reclaimer. Zipper in bottom for emptying dust and debris.

**Fill Door:** To add media to machine and remove debris from debris screen basket inside reclaimer, adjustable air intake on door.

**Media Valve:** Universal feed allowing all types of abrasives to be used. 2" drain plug outlet for easy clean-out.

**Media Hose:** 1/2" media line hose from reclaimer media valve to bottom fitting on blast gun.

**Sump Hose:** 4" flexible duct hose, from machine sump outlet to reclaimer inlet.

**Door Opening:** Large 13" wide x 15" tall opening. For easy removable and replacing tumble basket.

**Switch:** When door is closed and switch contact striker makes contact, the timer becomes operational. Blast gun and tumbler rotation will start.

**Timer:** Set timer switch to desired minutes for blast action and tumbler rotation. 0-30 minutes.

**Gauge:** Shows desired gun air pressure.

**Tumble Basket:** Large 10" x 10" basket. May be removed for easy loading and unloading. 15 pounds capacity. 3/16 Holes.

**Basket Cover:** Cover Attached to Door, Covers Basket When Door Closed.

**Air Flow Regulator:** Allows adjustable air pressure to gun for proper media flow to provide finish desired.

**Airline Filter:** 1/2" NPT Intermediate Filter

**Blast Gun Mount:** Blast gun is mounted and directed into basket to a desired position.

**Switch Contact Striker:** Makes contact with switch (#9) to start blast action.

**Door Latch:** Heavy duty positive cam type, adjustable for complete door seal.

**Gasket:** Large 1" wide x 1/2" thick gasket to provide a leak proof seal with cabinet knife edge.

**Sump Outlet:** Flexible duct hose connection.

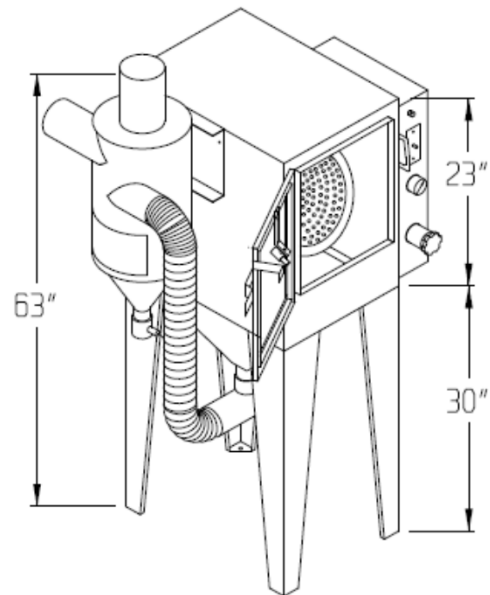


Fig. A

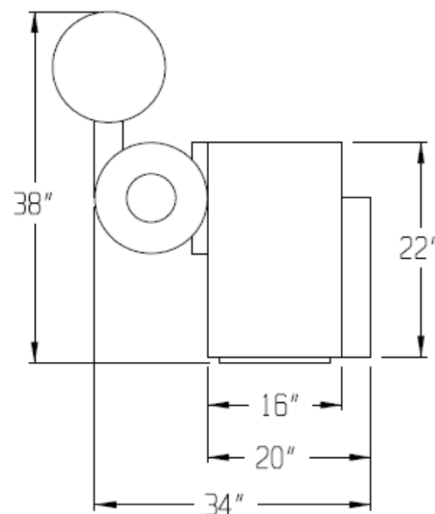


Fig. B

