

# LITTLE BLASTER™

HESS MANUFACTURING, INC.

BLAST-IT-ALL®

P.O. BOX 1615

SALISBURY, NC 28145

[WWW.BLAST-IT-ALL.COM](http://WWW.BLAST-IT-ALL.COM)

**LITTLE BLASTER™**

## **LBT-3 WITH 300 CFM RECLAIM**

**MANUAL NUMBER: 506**

### **TABLE OF CONTENTS**

<b>PAGE</b>	<b>FIGURE</b>	
1	-	<b>SET-UP INSTRUCTIONS</b>
1	-	<b>OPERATING INSTRUCTIONS</b>
1	-	<b>GENERAL MAINTENANCE</b>
2	1	<b>STANDARD CABINET AND RECLAIM PARTS</b>
3	2	<b>BASKET DRIVE &amp; PARTS</b>
4	3	<b>BASKET</b>
5	4	<b>MEDIA HOSE &amp; PARTS</b>
6	5	<b>MEDIA VALVE</b>
7	6	<b>BASKET DRIVE</b>
8	7	<b>AIR CONTROL</b>
9	8	<b>BLAST GUN</b>
10	9	<b>ELECTRICAL BOX</b>
11	10	<b>ELECTRICAL DIAGRAM</b>
12	11	<b>BASKET COVER</b>
13	-	<b>MACHINE WARRANTY</b>

### **WARNING**

**DO NOT USE SAND.** SAND WILL CAUSE SILICA DUST, WHICH IS THE CAUSE OF SILICOSIS DISEASE, A CONDITION OF MASSIVE FIBROSIS OF THE LUNGS. THIS STATEMENT INDICATES POTENTIAL PERSONNEL HAZARD.

**FAILURE TO COMPLY WITH THESE INSTRUCTIONS  
MAY RESULT IN PERSONAL INJURY.**

WEBSITE CONCERNING SILICOSIS:

[http://www.osha.gov/Silica/IT69D\\_1.html](http://www.osha.gov/Silica/IT69D_1.html)

# LITTLE BLASTER™

## SET-UP INSTRUCTIONS

### MACHINES WITH 300 CFM RECLAIM

**\*\*\* READ BEFORE OPERATING EQUIPMENT \*\*\***

1. Remove plastic from machine.
2. Remove lag bolts from each of the four legs, then remove machine from the pallet.
3. Remove bag & clamp from machine.
4. Connect compressed air supply to air filter. Air piping should be of the same size as the connection point, offering no restriction to flow.
5. Connect the factory installed male cord from electrical box, to a 120-Volt, 60 HZ, 1 Phase power supply. A 20 AMP breaker or fuse should be used.

**(DO NOT USE QUICK-DISCONNECTS)**

**MAKE SURE MACHINE IS PROPERLY GROUNDED.**

## OPERATING INSTRUCTIONS

### 1. **Preparing parts for Blasting:**

All parts to be processed must be free of oil, grease, and moisture. Make sure parts are dry before putting into basket for cleaning.

### 2. **Air Pressure:**

5 PSI to 80 PSI. Set air pressure at 80 PSIG. Most parts for blasting cleaning cabinet should be blasted at 80 psi. Designate parts to be processed, start at lower pressure and work up the PSI scale to obtain desired finish.

**\*\*\*WARNING\*\*\***

**DO NOT CONNECT TO HIGH PRESSURE BOTTLE GAS, RUPTURE AND EXPLOSION CAN OCCUR.**

## GENERAL MAINTENANCE

### 1. **Blasting Gun:**

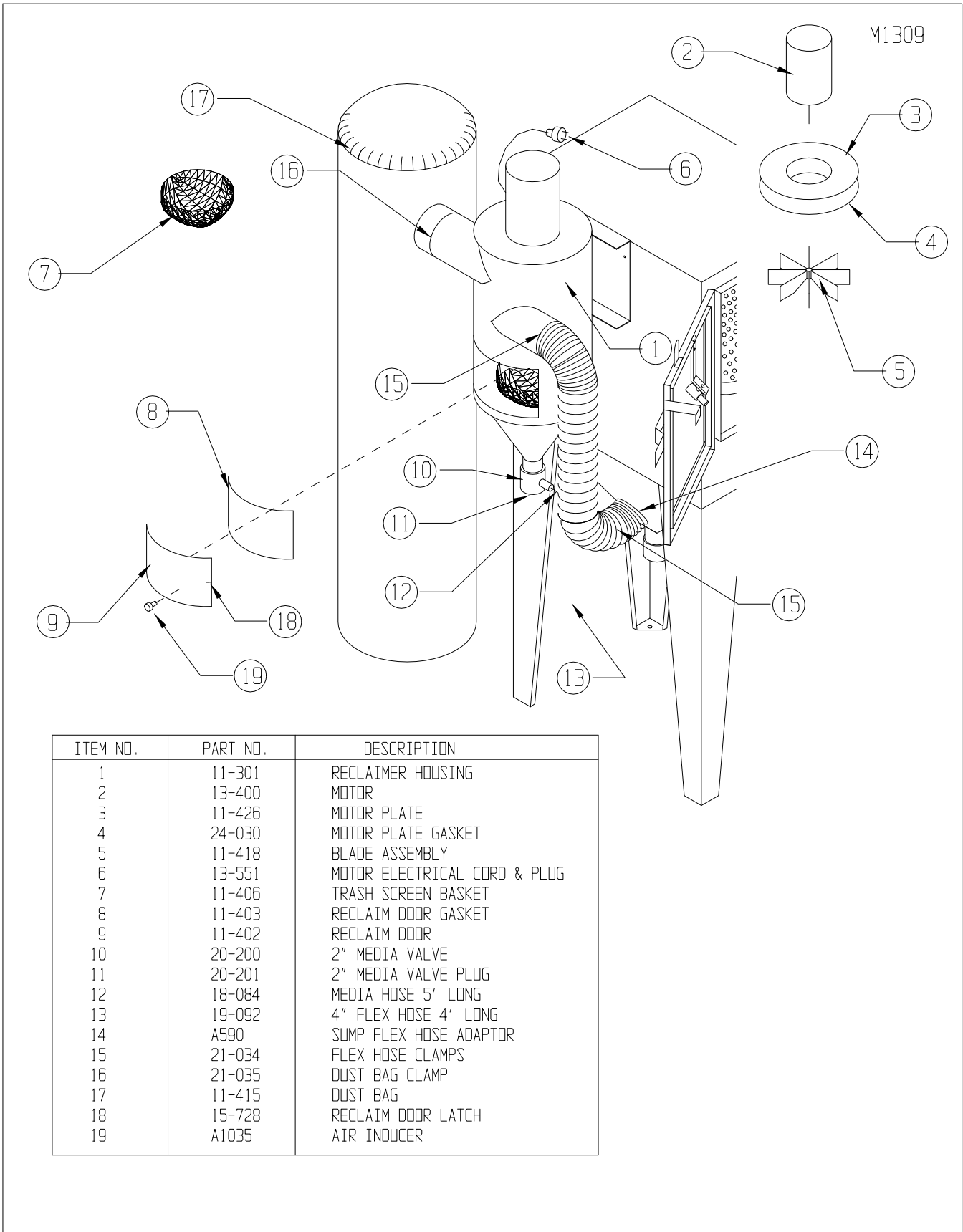
After 10 - 12 hours of blasting time the air orifice and nozzle should be checked. If the nozzle shows wear, rotate 1/4 turn to prevent uneven wear. If this is not checked, it could result in destruction of nozzle and damage to the gun housing. If wear is detected on the orifice tip, replace.

### 2. **Caking of Media:**

Media caking is caused by moisture in compressed air supply or oily and greasy parts. If this is not corrected, media will not flow and will clog gun. Check air supply. If water or moisture is present, install a good moisture trap. If oily or greasy parts are being blast treated, you should first degrease and dry parts.

LITTLE-BLASTER™

LB-300 CFM RECLAIMER



ITEM NO.	PART NO.	DESCRIPTION
1	11-301	RECLAIMER HOUSING
2	13-400	MOTOR
3	11-426	MOTOR PLATE
4	24-030	MOTOR PLATE GASKET
5	11-418	BLADE ASSEMBLY
6	13-551	MOTOR ELECTRICAL CORD & PLUG
7	11-406	TRASH SCREEN BASKET
8	11-403	RECLAIM DOOR GASKET
9	11-402	RECLAIM DOOR
10	20-200	2" MEDIA VALVE
11	20-201	2" MEDIA VALVE PLUG
12	18-084	MEDIA HOSE 5' LONG
13	19-092	4" FLEX HOSE 4' LONG
14	A590	SUMP FLEX HOSE ADAPTOR
15	21-034	FLEX HOSE CLAMPS
16	21-035	DUST BAG CLAMP
17	11-415	DUST BAG
18	15-728	RECLAIM DOOR LATCH
19	A1035	AIR INDUCER

Figure 1

LBT-3 CABINET PARTS

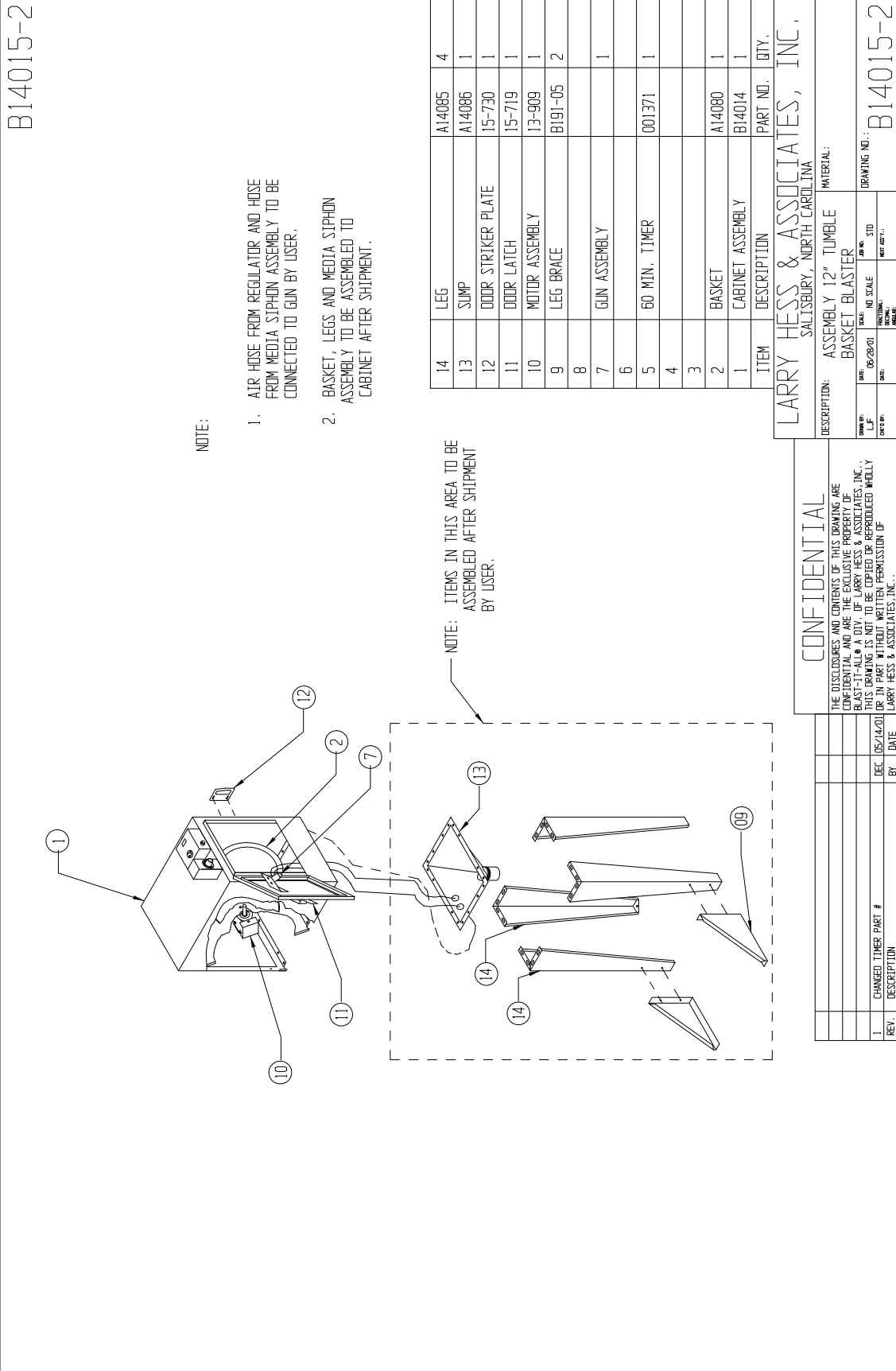


Figure 2

LBT-3 REPLACEMENT BASKET

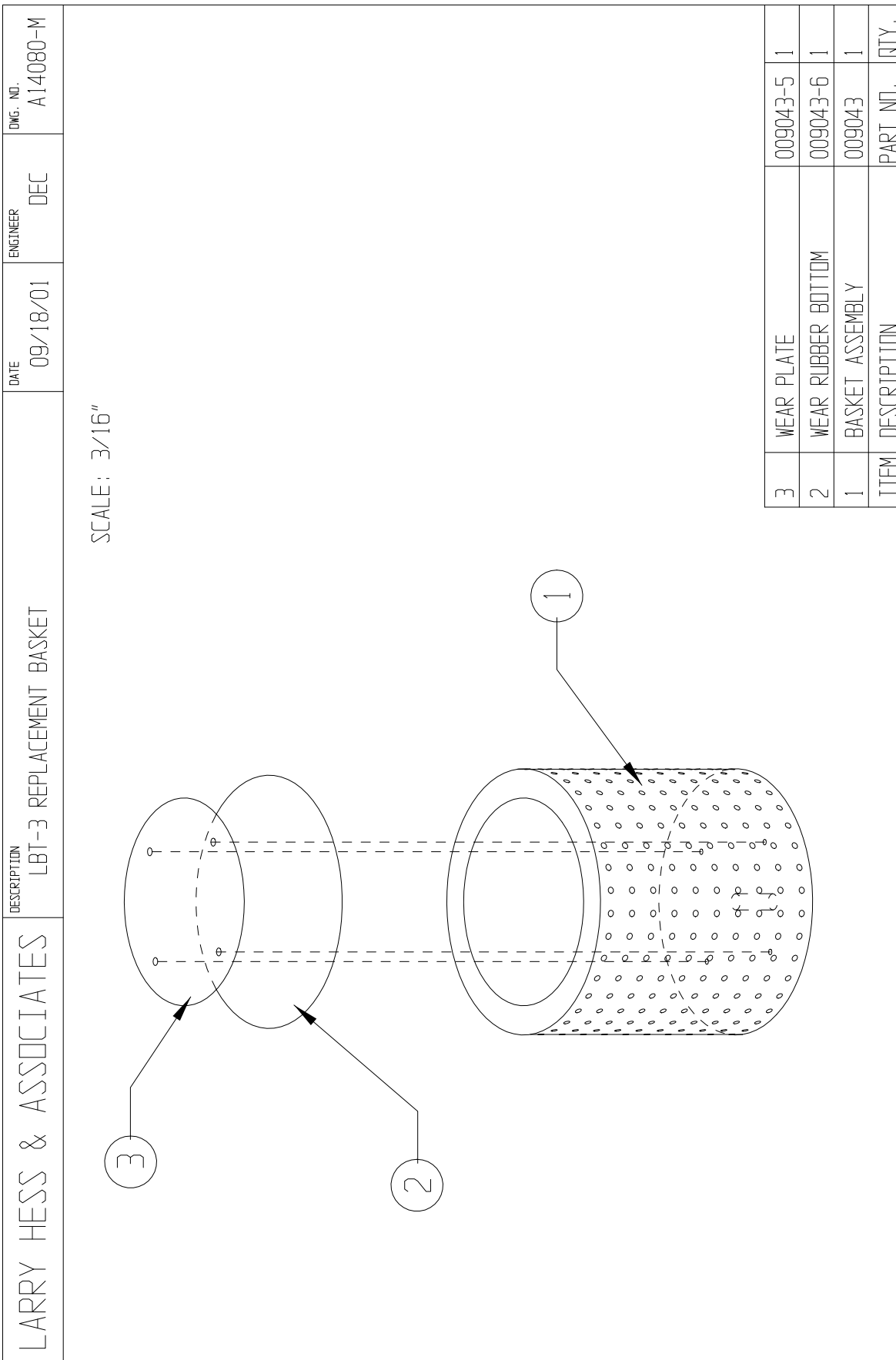


Figure 3

LBT-3 MEDIA SIPHON ASSEMBLY

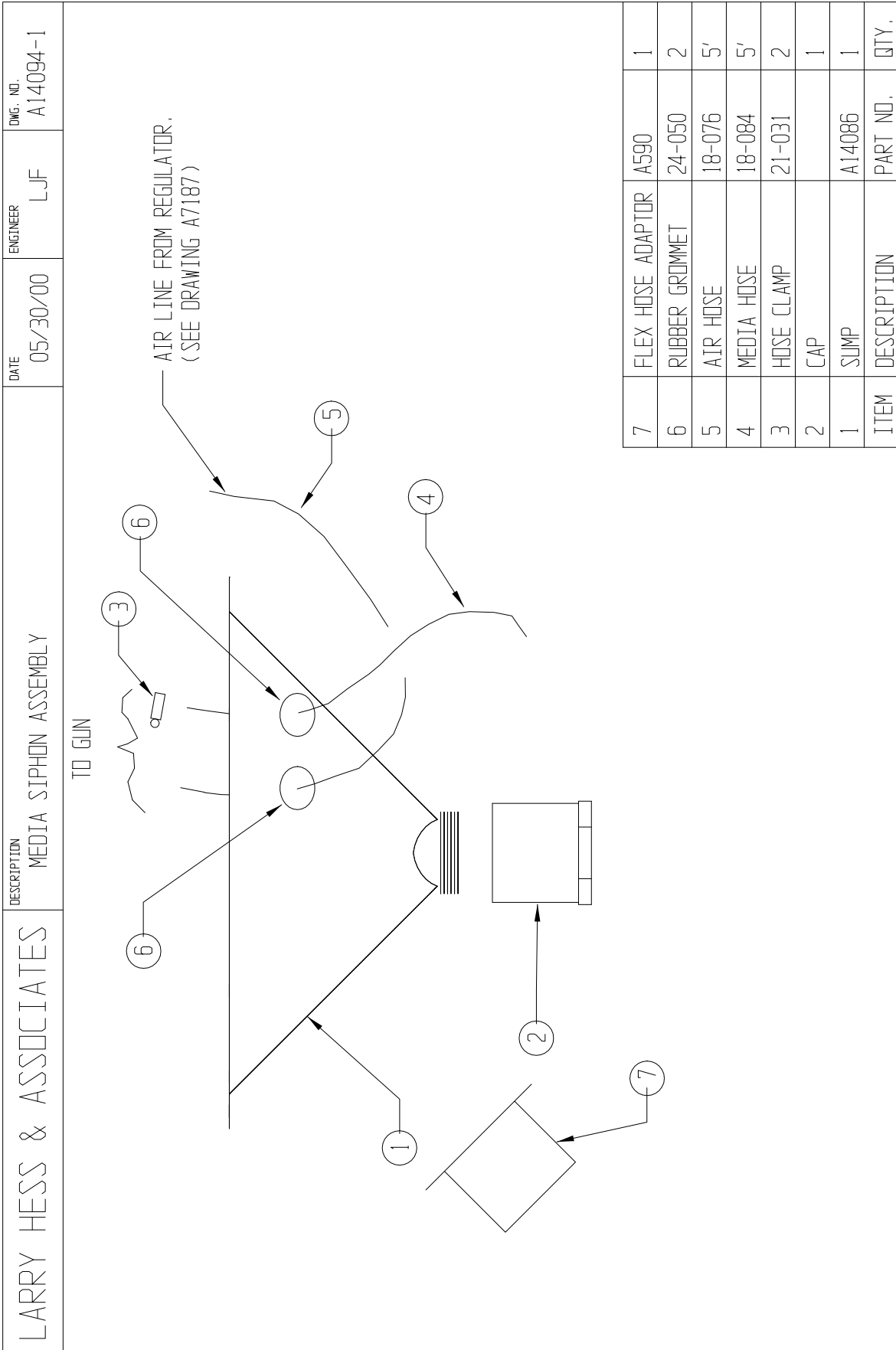
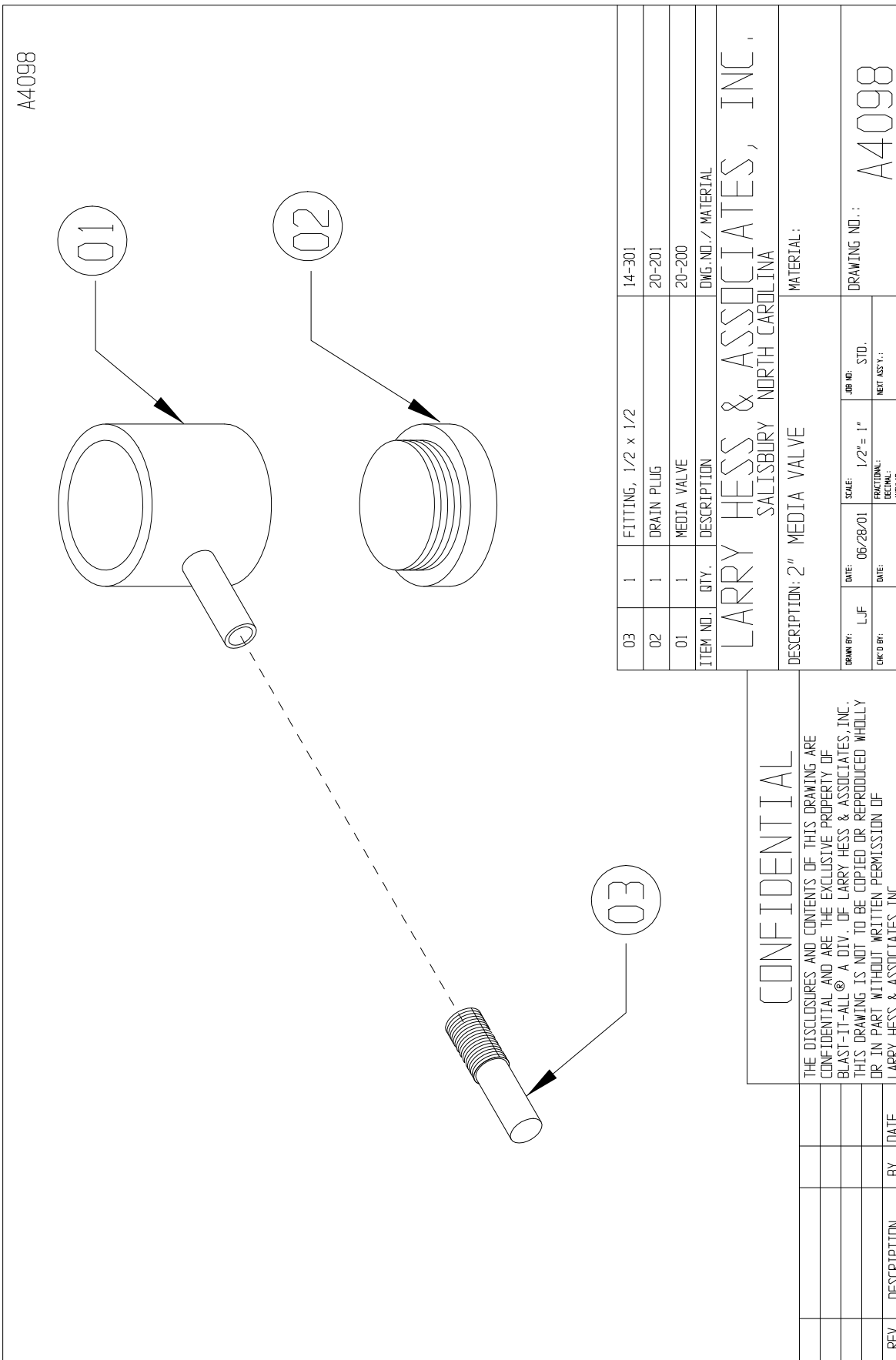


Figure 4

LBT-3 MEDIA VALVE



A4098

03	1	FITTING, 1/2 x 1/2	14-301
02	1	DRAIN PLUG	20-201
01	1	MEDIA VALVE	20-200
ITEM NO.	QTY.	DESCRIPTION	DMG. NO. / MATERIAL
LARRY HESS & ASSOCIATES, INC. SALISBURY NORTH CAROLINA			
DESCRIPTION: 2" MEDIA VALVE			
MATERIAL:			
DATE:	DATE:	SCALE:	JOB NO:
LJF	06/28/01	1/2" = 1"	STD.
CHK'D BY:	DATE:	FRACTIONAL:	NET ASY'Y:
		DECIMAL:	
		ANGULAR:	
			DRAWING NO.: A4098

**CONFIDENTIAL**

THE DISCLOSURES AND CONTENTS OF THIS DRAWING ARE CONFIDENTIAL AND ARE THE EXCLUSIVE PROPERTY OF BLAST-IT-ALL® A DIV. OF LARRY HESS & ASSOCIATES, INC. THIS DRAWING IS NOT TO BE COPIED OR REPRODUCED WHOLLY OR IN PART WITHOUT WRITTEN PERMISSION OF LARRY HESS & ASSOCIATES, INC.

REV.	DESCRIPTION	BY	DATE

Figure 5

LBT-3 MOTOR ASSEMBLY

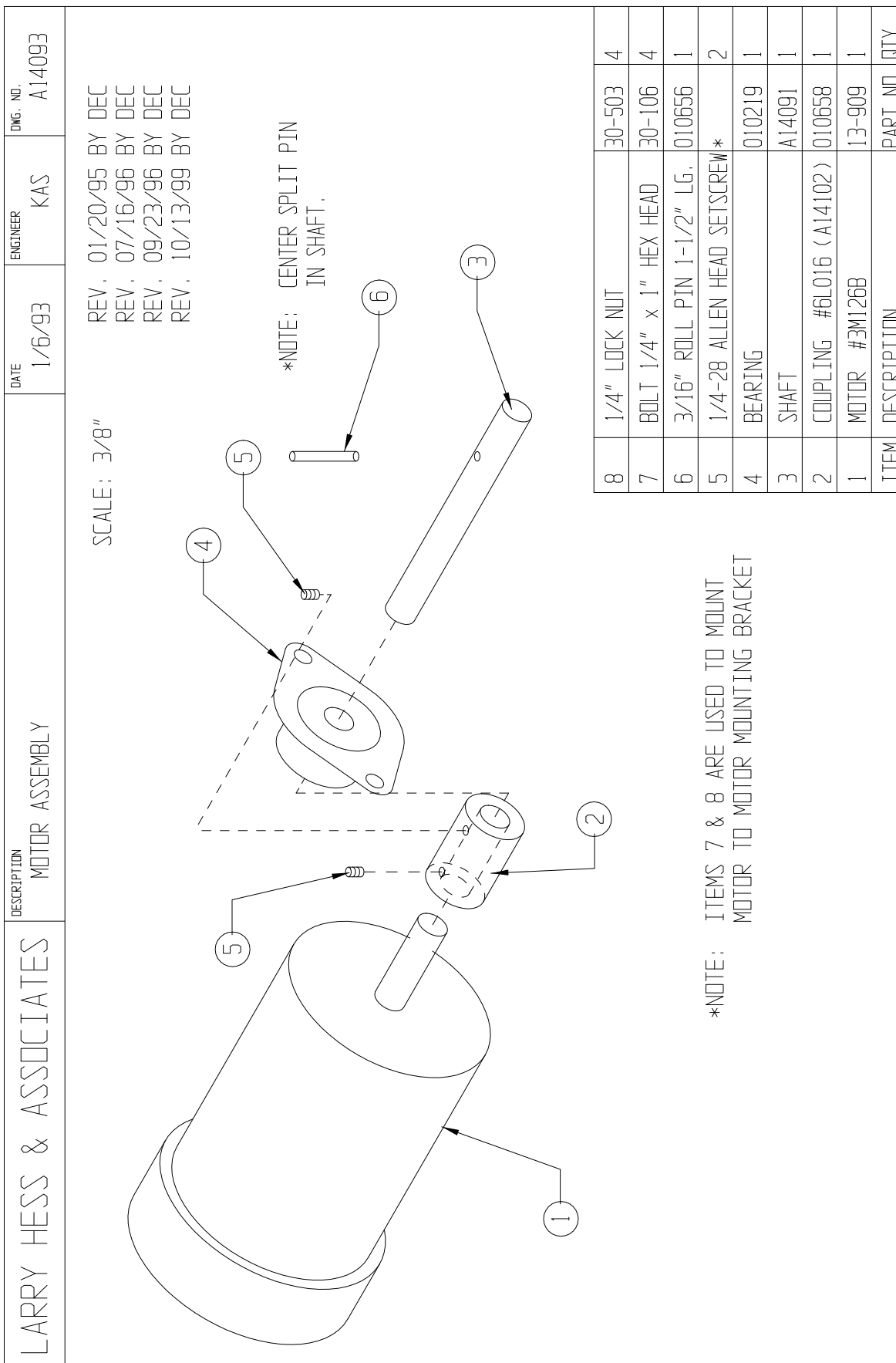
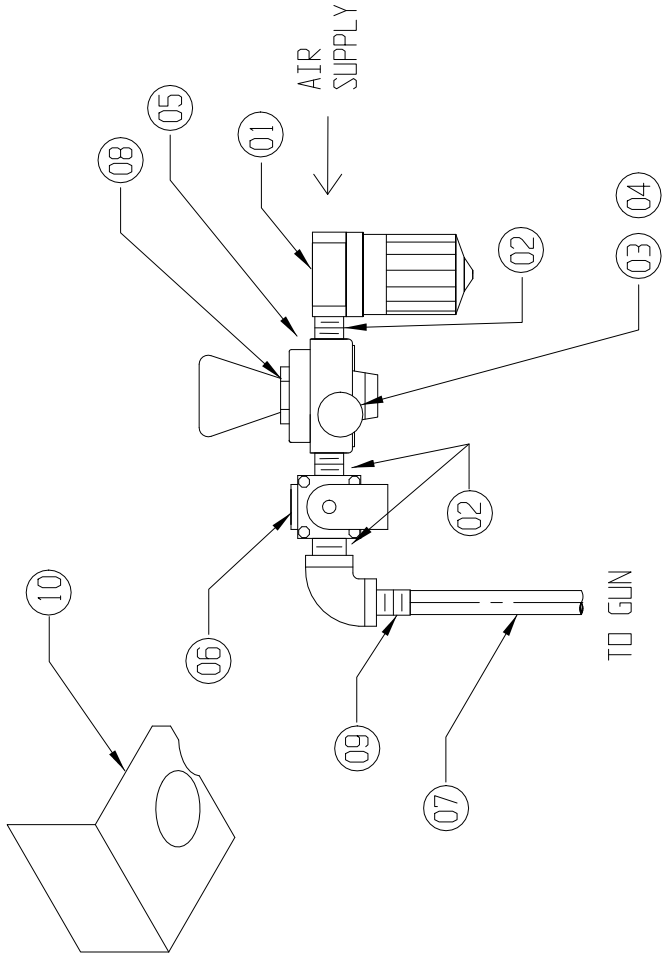


Figure 6



LBT-3 AIR CONTROLS

A7187



10	1	BRACKET	D105-13
09	1	1/2 x 1/2 BARB FITTING	14-301
08	1	LOCK RING	16-965LR
07	1	Ø 1/2" AIR HOSE	18-076 x 5' LONG
06	1	1/2" SOLENOID	13-514
05	1	1/2" REGULATOR	16-965
04	1	GAUGE, 1/4"	16-819
03	1	1/4" STREET ELBOW	002301
02	3	1/2" CLOSE NIPPLE	14-378
01	1	FILTER 1/2"	16-966
ITEM NO.	QTY.	DESCRIPTION	DWG. NO. / MATERIAL

LARRY HESS & ASSOCIATES, INC.,  
SALISBURY NORTH CAROLINA

MATERIAL:

DESCRIPTION: LBT-3  
AIR CONTROLS

DRAWING NO.: A7187

**CONFIDENTIAL**

THE DISCLOSURES AND CONTENTS OF THIS DRAWING ARE CONFIDENTIAL AND ARE THE EXCLUSIVE PROPERTY OF BLAST-IT-ALL® A DIV. OF LARRY HESS & ASSOCIATES, INC.. THIS DRAWING IS NOT TO BE COPIED OR REPRODUCED WHOLLY OR IN PART WITHOUT WRITTEN PERMISSION OF LARRY HESS & ASSOCIATES, INC..

REV.	DESCRIPTION	BY	DATE
1	ADD 3 ITEMS	LJF	06/27/01

Figure 7

LBT-3 PRODUCTION GUN ASSEMBLY

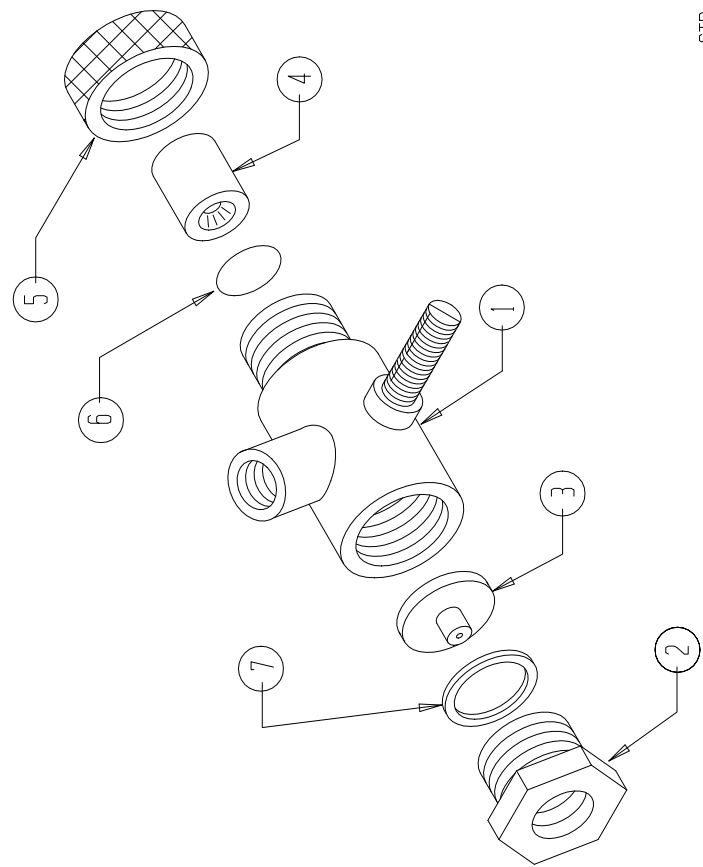
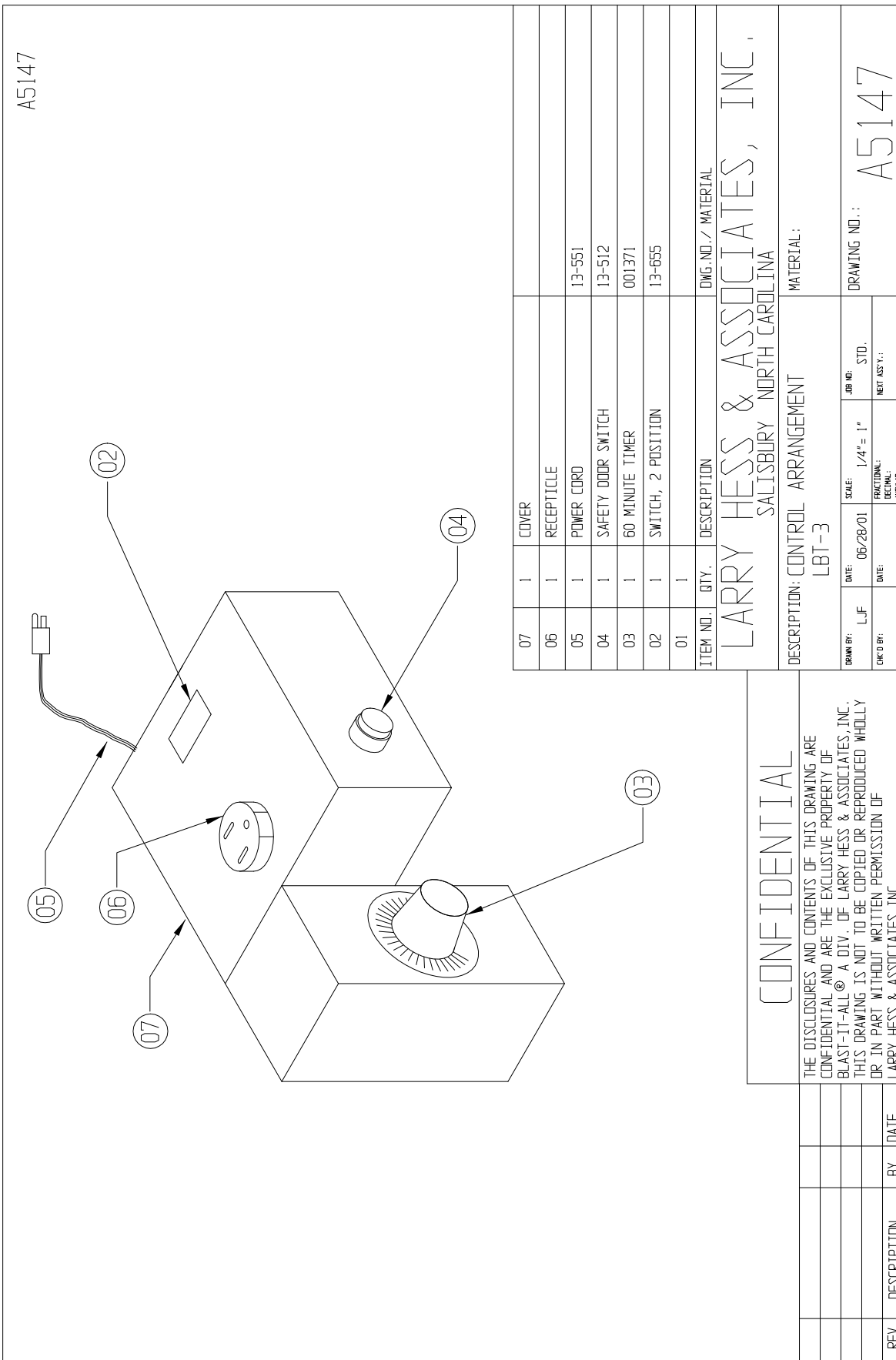
<p>LARRY HESS &amp; ASSOCIATES</p>	<p>DESCRIPTION PRODUCTION GUN ASSEMBLY</p>	<p>DATE 12/21/92</p>	<p>ENGINEER KAS</p>	<p>DWG. NO. A9063</p>
<p>REV. BY DEC 10/28/99 REV. BY L.J.F 05/30/00</p>				
				
<p>ITEM</p>	<p>7 SEAL</p>	<p>1</p>	<p>20-033</p>	
<p>6</p>	<p>"O" RING SEAL</p>	<p>1</p>	<p>20-053</p>	
<p>5</p>	<p>NOZZLE NUT HOLDING</p>	<p>1</p>	<p>20-054</p>	
<p>4</p>	<p>NOZZLE CARBIDE 7/16</p>	<p>1</p>	<p>20-087</p>	
<p>4</p>	<p>NOZZLE CARBIDE 6/16</p>	<p>1</p>	<p>20-086</p>	
<p>4</p>	<p>NOZZLE CARBIDE 5/16</p>	<p>1</p>	<p>20-085</p>	
<p>4</p>	<p>NOZZLE CARBIDE 4/16</p>	<p>1</p>	<p>20-084</p>	
<p>3</p>	<p>DRIFICE 7/32</p>	<p>1</p>	<p>20-037</p>	
<p>3</p>	<p>DRIFICE 6/32</p>	<p>1</p>	<p>20-036</p>	
<p>3</p>	<p>DRIFICE 5/32</p>	<p>1</p>	<p>20-035</p>	
<p>3</p>	<p>DRIFICE 4/32</p>	<p>1</p>	<p>20-034</p>	
<p>2</p>	<p>FITTING DRIFICE HOLDING</p>	<p>1</p>	<p>20-032</p>	
<p>1</p>	<p>GUN HOUSING (RIGHT MOUNT)</p>	<p>1</p>	<p>20-023</p>	
<p>DESCRIPTION</p>	<p>DESCRIPTION</p>	<p>QTY</p>	<p>PART NO.</p>	

Figure 8

LBT-3 CONTROL ARRANGEMENT



A5147

07	1	COVER	
06	1	RECEPTACLE	
05	1	POWER CORD	13-551
04	1	SAFETY DOOR SWITCH	13-512
03	1	60 MINUTE TIMER	001371
02	1	SWITCH, 2 POSITION	13-655
01	1		

ITEM NO. QTY. DESCRIPTION DWG. NO. / MATERIAL  
 LARRY HESS & ASSOCIATES, INC.  
 SALISBURY NORTH CAROLINA

DESCRIPTION: CONTROL ARRANGEMENT  
 LBT-3 MATERIAL:

DATE:	06/28/01	SCALE:	1/4" = 1"	JOB NO.:	STD.
DRAWN BY:	LJF	FRACTIONAL:		NEXT ASS'Y.:	
CHK'D BY:		DATE:		DRAWING NO.:	A5147

**CONFIDENTIAL**  
 THE DISCLOSURES AND CONTENTS OF THIS DRAWING ARE CONFIDENTIAL AND ARE THE EXCLUSIVE PROPERTY OF BLAST-IT-ALL® A DIV. OF LARRY HESS & ASSOCIATES, INC. THIS DRAWING IS NOT TO BE COPIED OR REPRODUCED WHOLLY OR IN PART WITHOUT WRITTEN PERMISSION OF LARRY HESS & ASSOCIATES, INC.

REV.	DESCRIPTION	BY	DATE

LBT-3 WIRING DIAGRAM

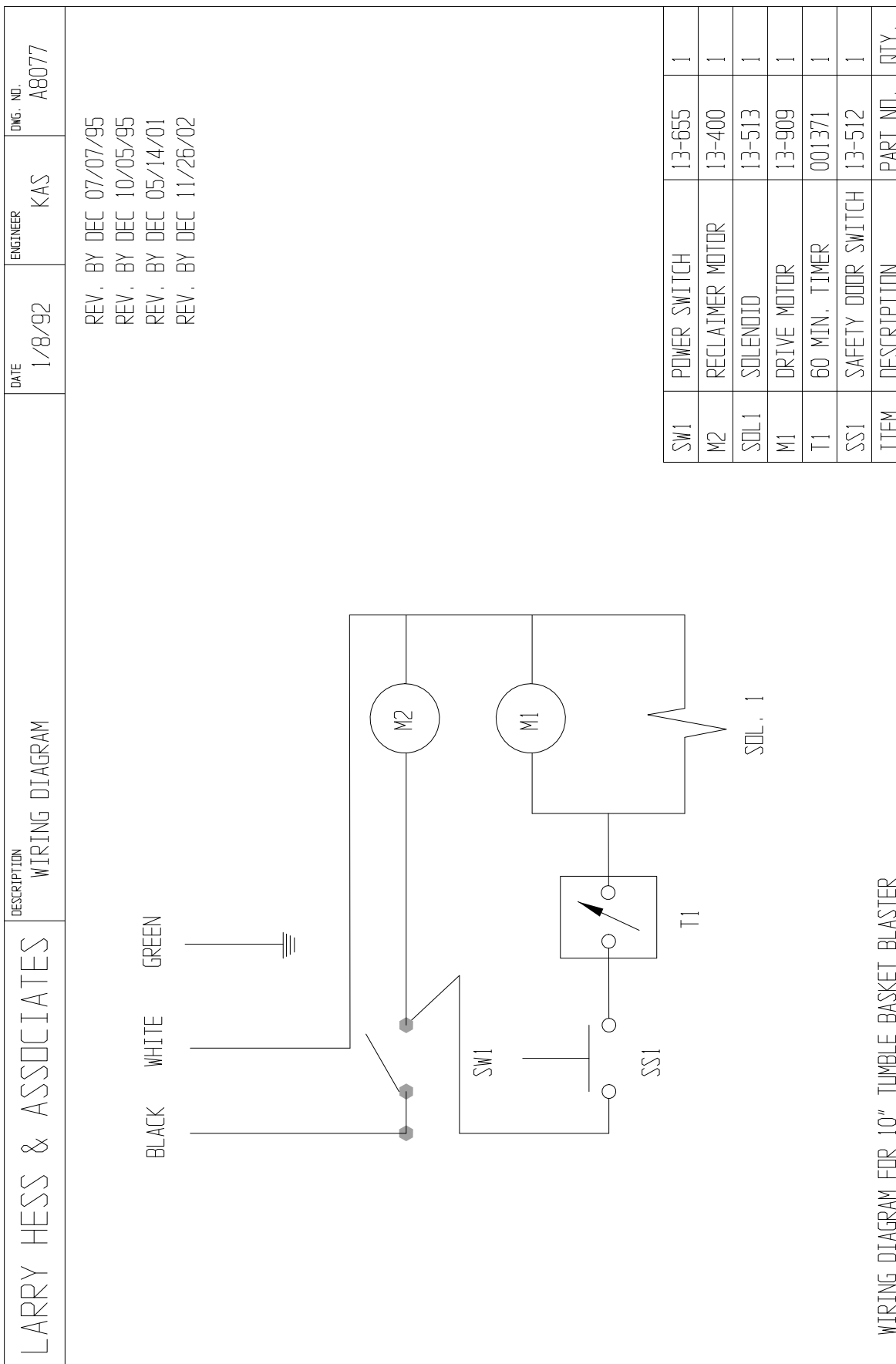


Figure 10



**COVER PN# A14151-1**





# BLAST-IT-ALL®

A Division of Hess Manufacturing Inc.  
185 Piper Lane Salisbury, NC 28147  
P O Box 1615 Salisbury, NC 28145  
Toll Free 800-535-2612  
Fax 704-638-9311



Hess Manufacturing Inc. Warrants to the original purchaser of the merchandise sold, to be free from defects in material or workmanship under normal use and service for a period of (5) years. **This warranty does not cover typical wear items.** Upon prompt notification by the purchaser, to HM, components that are determined by HM to be defective will be repaired or replaced at no additional charge F.O.B. our factory.

This warranty requires the following:

- 1) **A completed and returned Warranty Registration card.**
- 2) **Use of Genuine Blast-it-all® OEM replacement parts purchased through Hess Manufacturing Inc. Blast-it-all® to include common wear items. For the entire period of the warranty.**
- 3) **Failures to provide proof of the purchase of Blast-it-all® OEM wear Items voids warranty.**

Manufacturer shall have the right to inspect prior replacing all merchandise in question.

Manufacturer shall not be required to pay any removal or installation charges whatsoever

Manufacturer shall not be held liable for prospective profits, special or consequential damages, nor shall any recovery of any kind against manufacturer be greater in amount the cost of the repairs of defects in workmanship

This warranty does not apply to damage caused by accidents, damage occurring during transit, alterations by unauthorized personnel, abuse or damage by flood, fire or acts of God, nor by artificially generated electric currents or any other cause whatsoever except defects in material or factory workmanship.

In ALL cases, defective parts must be returned to Hess Manufacturing Inc. before credit is issued.

This warranty is in lieu of all other warranties expressed, written or implied and releases Hess Manufacturing Inc. of all other obligations and liabilities whatsoever. This warranty neither assumes nor authorizes any person any obligation other than those specified by this warranty.



**DO NOT USE SAND! SAND WILL CAUSE SILICA DUST, WHICH IS THE CAUSE OF SILICOSIS DISEASE, A CONDITION OF MASSIVE FIBROSIS OF THE LUNGS. THIS STATEMENT INDICATES POTENTIAL PERSONEL HAZARD. FAILURE TO COMPLY WITH THESE INSTRUCTIONS MAY RESULT IN PERSONAL INJURY.**