

**LITTLE – BLASTER™**  
**DIVISION OF HESS MANUFACTURING, INC.**  
**P.O. BOX 1615**  
**SALISBURY, NC 28145-1615**

**PHONE: (704) 637-3300**  
**TOLL FREE: (800) 535-2612**  
**FAX: (704) 638-9311**

**MM348**

**PRESSURE BLAST OPERATION – LITTLE BLASTER SHOT PEENER**

**OPERATION & PARTS MANUAL**



**\*\* WARNING \*\***

**DO NOT USE SAND.** SAND WILL CAUSE SILICA DUST, WHICH IS THE CAUSE OF SILICOSIS DISEASE, A CONDITION OF MASSIVE FIBROSIS OF THE LUNGS. THIS STATEMENT INDICATES A POTENTIAL PERSONNEL HAZARD. FAILURE TO COMPLY WITH THESE INSTRUCTIONS MAY RESULT IN PERSONAL INJURY.

**THIS MACHINE IS DESIGNED FOR THE  
USE OF STEEL SHOT OR STEEL GRIT.**

**TABLE OF CONTENTS**

<b>SET-UP INSTRUCTIONS</b>	<b>PAGE</b>
<b>Machine with cartridge type Dust Collector.....</b>	<b>1</b>
<b>OPERATING INSTRUCTIONS.....</b>	<b>2</b>
<b>MAINTENANCE INSTRUCTIONS</b>	
<b>Machine with cartridge Dust Collector.....</b>	<b>3</b>
<b>ILLUSTRATIONS</b>	
<b>WARRANTY</b>	

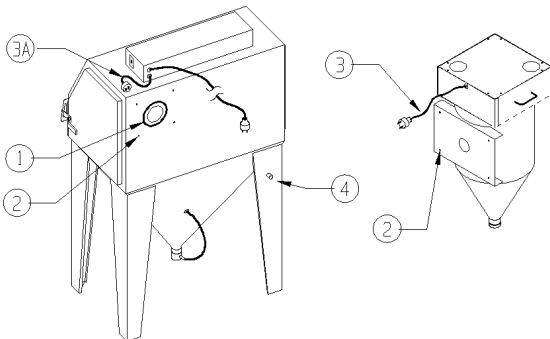
# LITTLE – BLASTER™

## SET-UP INSTRUCTIONS

### FOR MACHINES WITH CARTRIDGE TYPE DUST COLLECTORS

\*\*\* READ BEFORE OPERATING EQUIPMENT\*\*\*

1. Remove all shipping protection: plastic wrapping, shipping pallet, boxes inside of machine, etc... Check for any concealed shipping damage; if any damage, report to your freight carrier within 24 hours.
2. Blast cabinet should be placed in a desired location, away from any water or liquid environment such as cleaning vats, etc., where the air supply is not restricted and dry. If moist compressed air is present at this location, install a good moisture separator. This will assure that the air is not contaminated with moisture.
3. Installing Cartridge Dust Collector: (Refer to Figure 1) packed inside dust collector is 4 bolts, washers, nuts, and a roll of putty tape. Item #1 – Apply putty tape to back of cabinet around the large hole, press to make a firm bond to cabinet and squeezing together at seam. Remove paper from putty tape. Item #2 – Align the 4 hole bolt pattern and install bolts, washers, and nuts. Tighten bolts and nuts securely to square or flatten putty tape. Item #3 – Plug electrical cord from side of dust collector into cord plug from light box Item #3A.
4. Connect your air supply line to machine air inlet on left rear leg, Item #4, we recommend using ½” minimum supply line. (Again, make sure you air supply line is free from oil and moisture. If not, install a good moisture separator) Part. No. 16-815.
5. Connect electrical cord from light box Item #5 to grounded electrical source, 110 volt/ 60 cycle, single phase.
6. Charge blast machine with abrasive. Pour media into cabinet through one of the doors, fill to bottom of screen in sump of cabinet. DO NOT FILL ABOVE SCREEN. This will cause packing and media will not flow properly.



**WARNING**

**DO NOT USE SAND. SAND WILL CAUSE SILICA DUST, WHICH IS THE CAUSE OF SILICOSIS DISEASE, A CONDITION OF MASSIVE FIBROSIS OF THE LUNGS. THIS STATEMENT INDICATES POTENTIAL PERSONNEL HAZARD. FAILURE TO COMPLY WITH THESE INSTRUCTIONS MAY RESULT IN PERSONAL INJURY. WEBSITE FOR SILICOSIS: [http://osha-slc.gov/SLTC/silica\\_advisor/mainpage.html](http://osha-slc.gov/SLTC/silica_advisor/mainpage.html)**

## LITTLE – BLASTER™

# OPERATING INSTRUCTIONS

\*\*\*READ BEFORE OPERATING EQUIPMENT\*\*\*

### 1. Preparing parts for blasting:

All parts to be processed must be free of oil, grease and moisture. Make sure parts are dry before putting into cabinet for cleaning.

### 2. Air Pressure:

Operating Pressure: 5 PSI to 80 PSI.

Set air pressure at 80 PSIG. Most parts for blast cleaning can be blasted at 80 PSI. designate parts to be processed, start at lower pressures and work up the PSI scale to obtain desired finish.

## WARNING

**\*\*DO NOT CONNECT TO HIGH PRESSURE BOTTLE GAS, RUPTURE AND EXPLOSION CAN OCCUR.\*\***

### 3. Gun Angle and Distance:

Direct gun at part approximately 45 – 60 degree angle with ricochet toward the back side of cabinet. Do not hold gun at 90 degree to part being processed. This will cause the media blast to bounce back into the blast stream and slow blasting action. Also 90 degree angle will cause excessive wear on gun and viewing window. Hold gun approximately 6 inches from part be cleaned.

## WARNING

**GUN MUST ALWAYS BE POINTED AWAY FROM THE OPERATOR AND TOWARD ITEM BEING PROCESSED. NEVER BLAST WITH ANY OF THE CABINET DOORS OPEN. WHILE LOADING AND UNLOADING, NO ONE SHOULD BE AT THE OPERATOR STATION AT FRONT OF THE CABINET.**

### 4. Media:

Media should be of good quality and dry. Damp media will cause the media not to flow and will clog abrasive flow. NEVER USE SAND. See “WARNING”, page 1. If you are having a problem selecting a media for a specified job, contact your selling distributors for their recommendations.

## LITTLE – BLASTER™

# PRESSURE BLAST OPERATION – LITTLE BLASTER SHOT PEENER

\*\*\*READ BEFORE OPERATING EQUIPMENT\*\*\*

1. Obtain the desired media for your operation. Open the cabinet door and pour 50 lbs. of media into the pressure tank.

**\*\*DO NOT FILL ABOVE THE POP-UP PLUNGER\*\***

2. Turn the MEDIA VALVE knob full clockwise. This is the closed position. Turn the knob counter-clockwise (3) full turns to begin blasting. Small adjustments may be necessary to obtain the proper air media mix.
3. Set the CHOKE VALVE to full open. (Handle parallel to the valve body). Small adjustments may be necessary to obtain the proper air media mix.

#### 4. TO BLAST

Close the BLOW-DOWN VALVE (Ball valve on the cabinet front sump). Reach hands through the glove ports and grasp the blast nozzle. Depress the foot control.

#### 5. TO STOP BLASTING

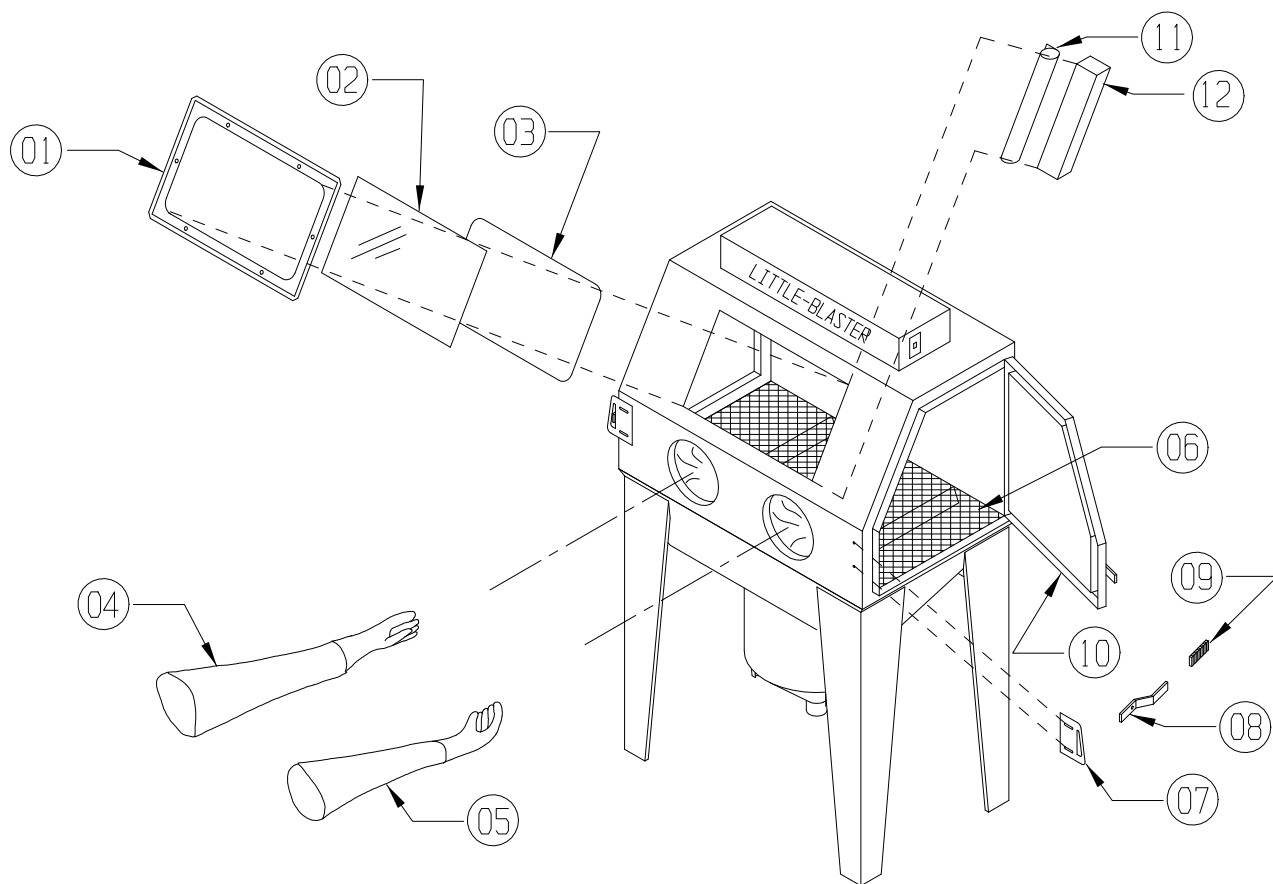
Remove your foot from the foot control. While holding the nozzle with one hand, OPEN THE BLOW-DOWN VALVE with your other hand. This will purge the tank for refilling.

#### 6. Readjusting the media/air flow.

A proper media/air ratio must be obtained for efficient blasting. This is accomplished by adjusting the media valve and choke valve. Adjustments should be made in small increments until the proper balance can be obtained. If the media flow is too rich this will cause pulsating. The media valve and choke valve should be operated as open as possible to produce the best blast results.

# LITTLE-BLASTER™

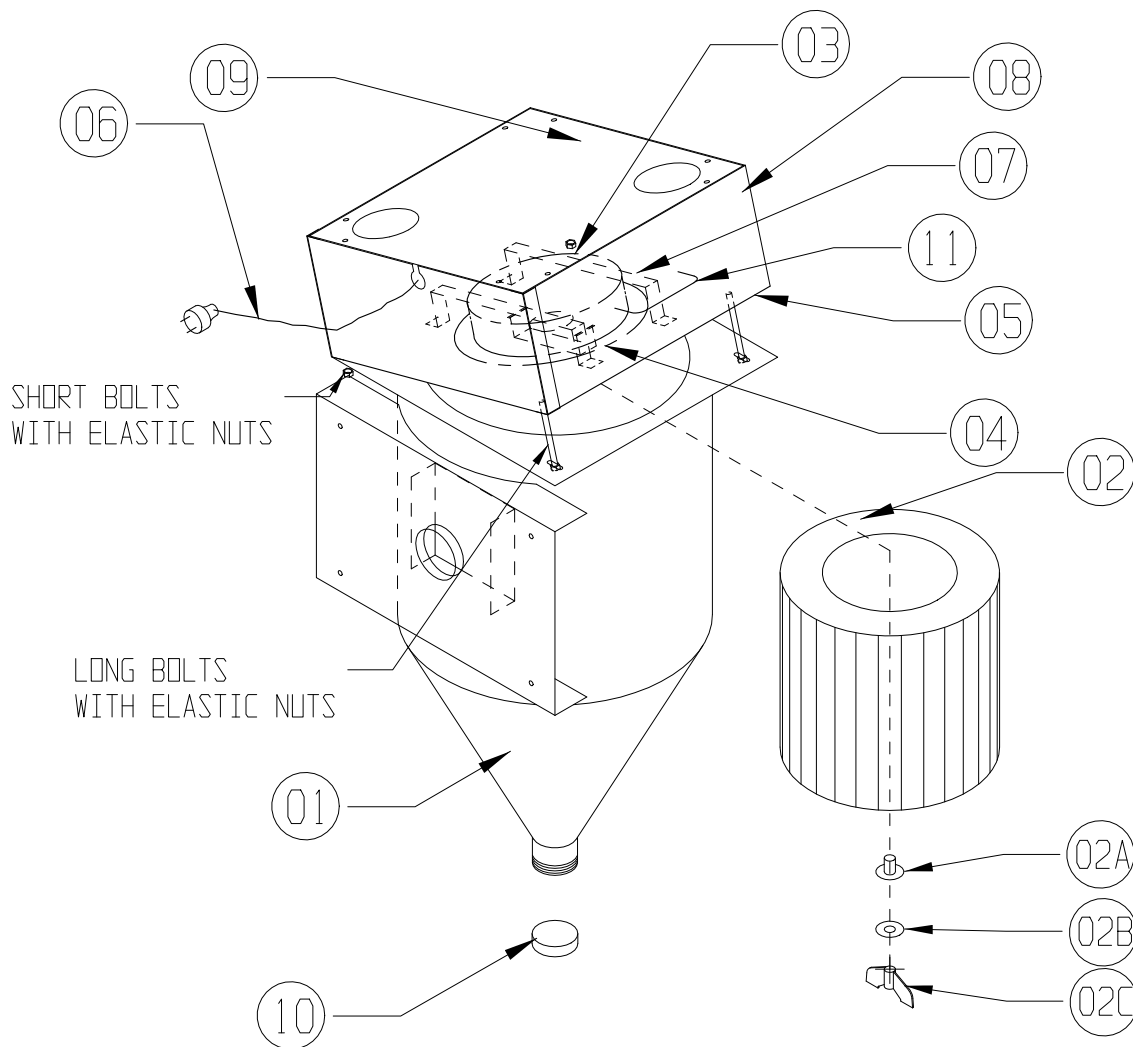
## SHOT PEENER CABINET PARTS



ITEM NO.	PART NO.	DESCRIPTION
1	23-053	WINDOW FRAME
2	23-050	WINDOW, VIEWING
3	24-054-56"	WINDOW GASKET
4	22-111	GLOVE, SNAP-IN (LEFT ONLY)
5	22-112	GLOVE, SNAP-IN (RIGHT ONLY)
6	10-152-40	GRATE
7	15-718	DOOR STRIKER (EITHER SIDE)
8	15-719	DOOR CAM (EITHER SIDE)
9	15-720	DOOR CAM RUBBER GRIP
10	24-054-8'	DOOR GASKET, PER DOOR
11	011191	MYLAR GLASS PROTECTOR
12	011190	MYLAR HOLDER

LITTLE-BLASTER™

CARTRIDGE DUST COLLECTOR

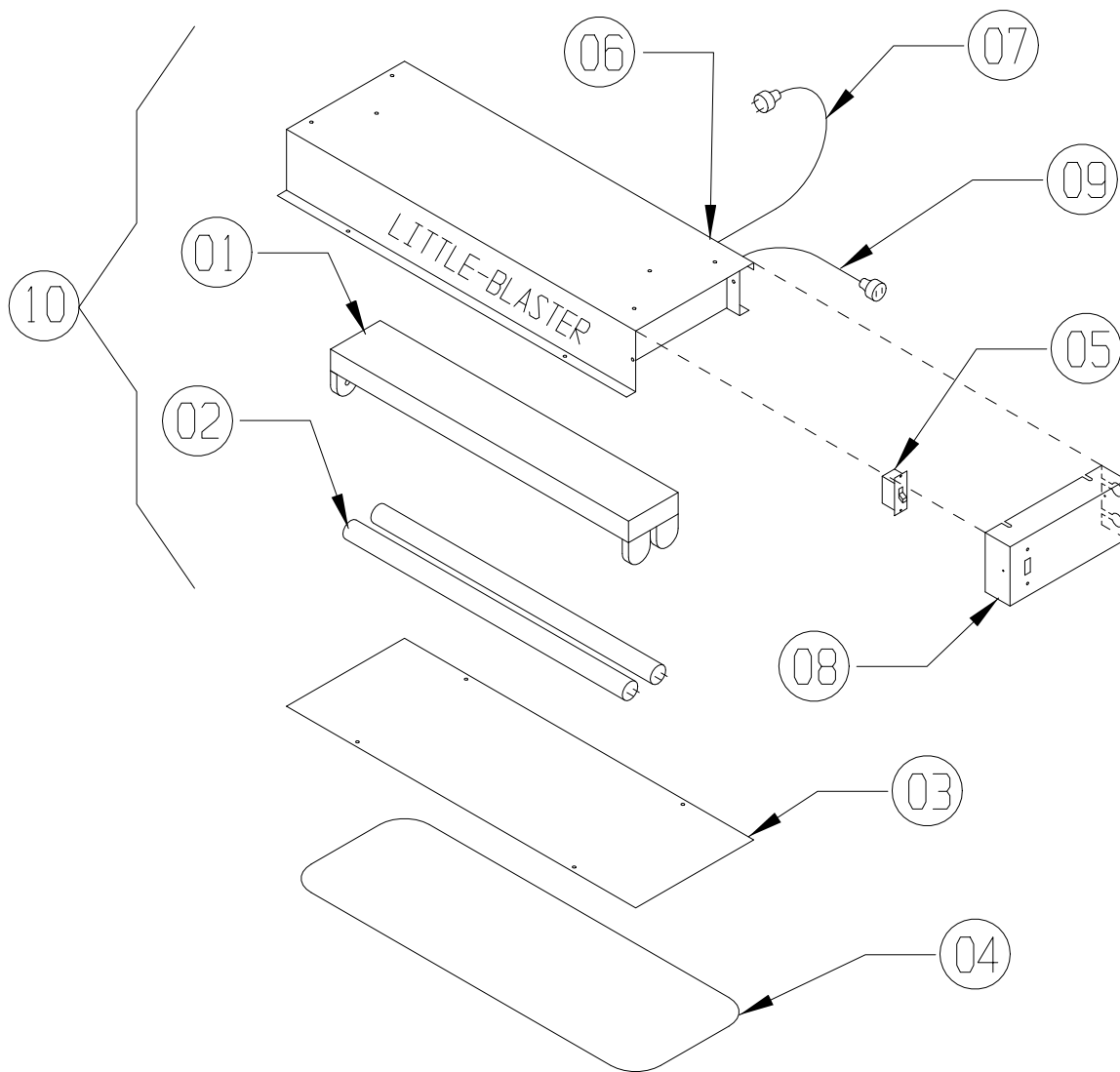


\*NOTE: ITEM (2A) RUBBER SEAL MUST BE IN PLACE TO REDUCE PREMATURE MOTOR FAILURE

ITEM NO.	PART NO.	DESCRIPTION
1	D2025	DUST COLLECTOR BODY
2	11-1524	DUST COLLECTOR CARTRIDGE (INCLUDES 2A, 2B, 2C)
2A	11-1524S	RUBBER SEAL
2B	30-601	1/4" WASHER
2C	30-510	1/4" WING NUT
3	13-200	MOTOR, 120V, 60/50 Hz, 6.9 AMP
4	24-056	GASKET, MOTOR SEAL
5	24-054-48	GASKET, TOP SEALING
6	010172	CORD, MALE PLUG
7	D2025-09	MOTOR BRACKETS
8	D2025-05&06	MOTOR HOUSING
9	D2025-04	COVER PLATE
10	010212	2" PIPE CAP
11	-----	LIFT HANDLE

# LITTLE-BLASTER™

## LIGHT BOX

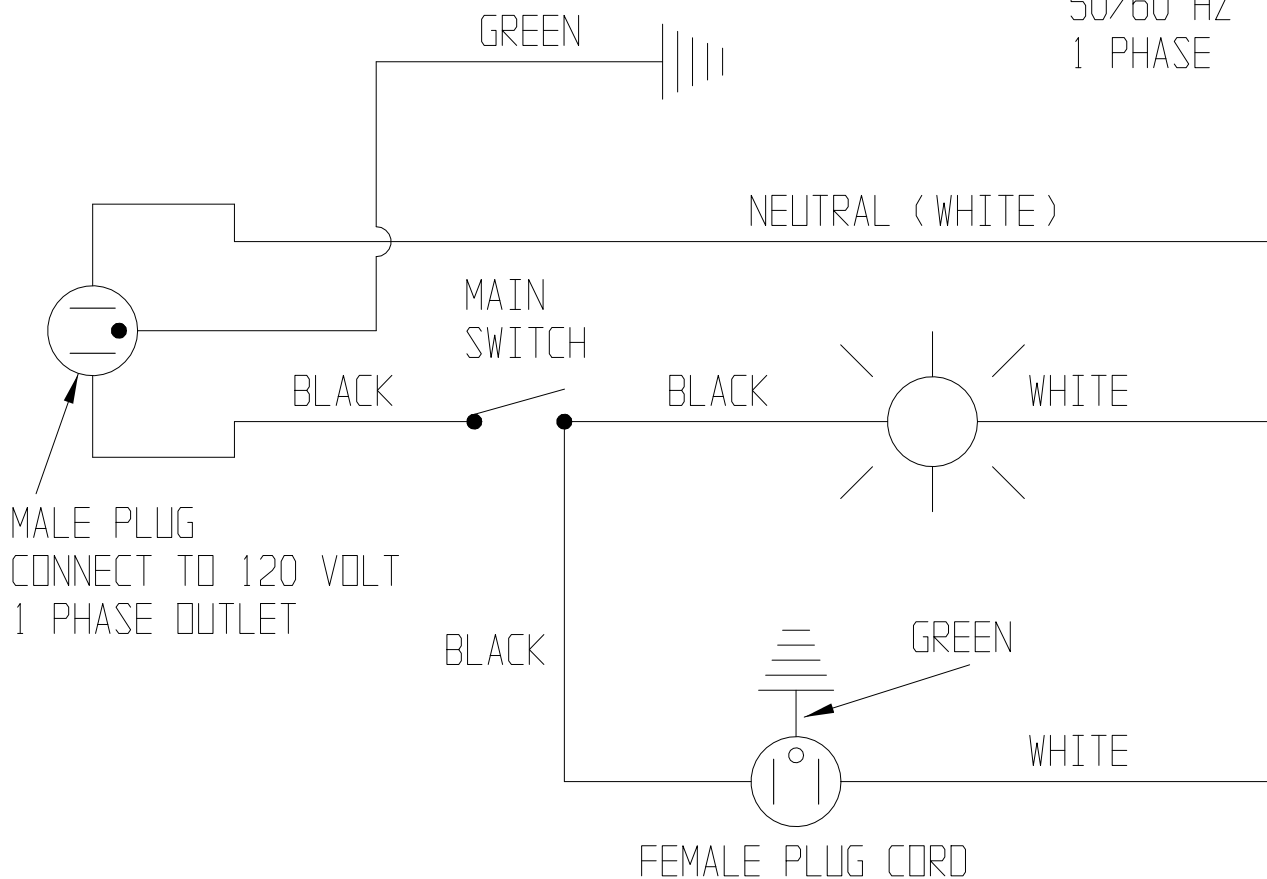


ITEM NO.	PART NO.	DESCRIPTION
1	13-533	FLUORESCENT FIXTURE, (NO TUBES)
2	13-534	24" FLUORESCENT TUBE
3	010216	PROTECTOR, LIGHT
4	24-054-64	WINDOW GASKET, 64" IN LENGTH
5	13-655	SWITCH
6	13-605	ROUND CONNECTOR
7	13-550	POWER CORD, 3 WIRE
8	B198-2	SWITCH MOUNTING PLATE
9	010172F	CORD WITH FEMALE PLUG
10	010800 LBLTBX	COMPLETE LIGHT BOX (EXCEPT 3 & 4)

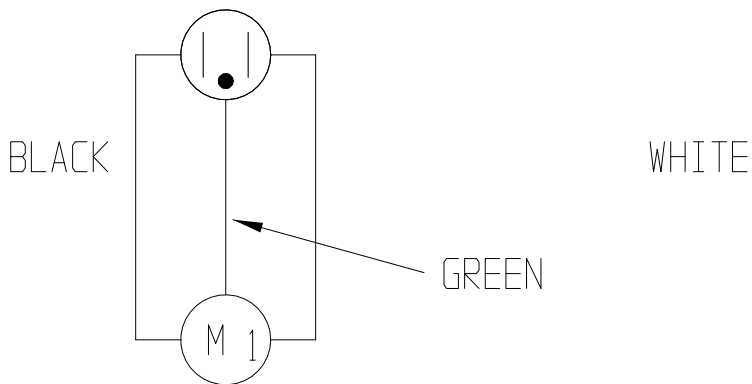
LITTLE-BLASTER™

ELECTRICAL DIAGRAM

120 VOLT POWER  
50/60 HZ  
1 PHASE

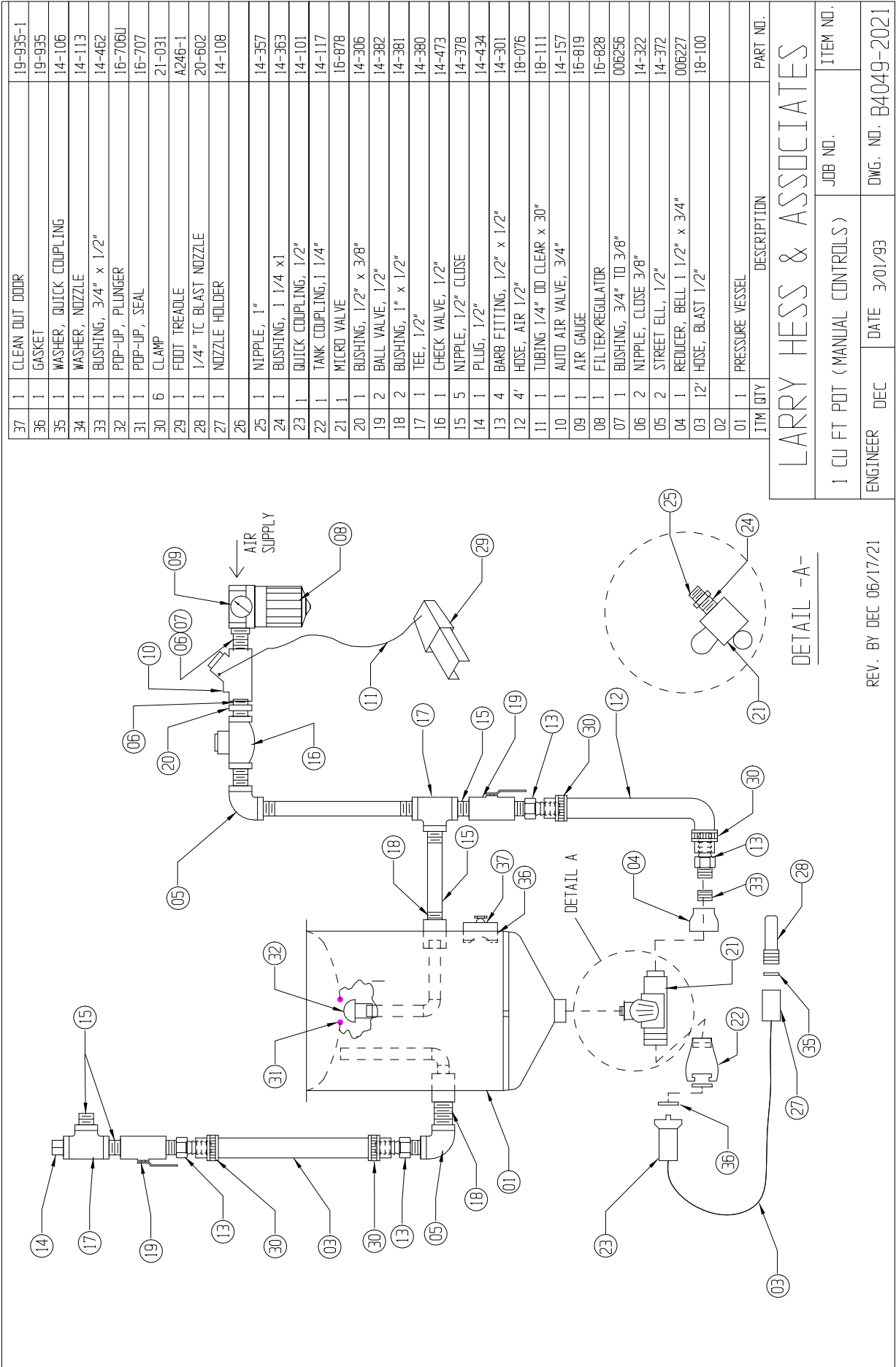


MALE PLUG CORD



DUST COLLECTOR MOTOR





37	1	CLEAN OUT DOOR	19-935-1
36	1	GASKET	19-935
35	1	WASHER, QUICK COUPLING	14-106
34	1	WASHER, NOZZLE	14-113
33	1	BUSHING, 3/4" x 1/2"	14-462
32	1	POP-UP, PLUNGER	16-706J
31	1	POP-UP, SEAL	16-707
30	6	CLAMP	21-031
29	1	FOOT TREADLE	A246-1
28	1	1/4" TC BLAST NOZZLE	20-602
27	1	NOZZLE HOLDER	14-108
26			
25	1	NIPPLE, 1"	14-357
24	1	BUSHING, 1 1/4 x 1	14-363
23	1	QUICK COUPLING, 1/2"	14-101
22	1	TANK COUPLING, 1 1/4"	14-117
21	1	MICRO VALVE	16-878
20	1	BUSHING, 1/2" x 3/8"	14-306
19	2	BALL VALVE, 1/2"	14-382
18	2	BUSHING, 1" x 1/2"	14-381
17	1	TEE, 1/2"	14-380
16	1	CHECK VALVE, 1/2"	14-473
15	5	NIPPLE, 1/2" CLOSE	14-378
14	1	PLUG, 1/2"	14-434
13	4	BARB FITTING, 1/2" x 1/2"	14-301
12	4'	HOSE, AIR 1/2"	18-076
11	1	TUBING 1/4" OD CLEAR x 30"	18-111
10	1	AUTO AIR VALVE, 3/4"	14-157
09	1	AIR GAUGE	16-819
08	1	FILTER/REGULATOR	16-828
07	1	BUSHING, 3/4" TO 3/8"	006256
06	2	NIPPLE, CLOSE 3/8"	14-322
05	2	STREET ELL, 1/2"	14-372
04	1	REDUCER, BELL 1 1/2" x 3/4"	006227
03	12'	HOSE, BLAST 1/2"	18-100
02			
01	1	PRESSURE VESSEL	

LARRY HESS & ASSOCIATES	
1 CU FT POT (MANUAL CONTROLS)	JOB NO.
ENGINEER DEC	DATE 3/01/93
DWG. NO. B4049-2021	ITEM NO.

DETAIL -A-

REV. BY DEC 06/17/21



# BLAST-IT-ALL®

A Division of Hess Manufacturing Inc.  
185 Piper Lane Salisbury, NC 28147  
P O Box 1615 Salisbury, NC 28145  
Toll Free 800-535-2612  
Fax 704-638-9311



Hess Manufacturing Inc. Warrants to the original purchaser of the merchandise sold, to be free from defects in material or workmanship under normal use and service for a period of (5) years. **This warranty does not cover typical wear items.** Upon prompt notification by the purchaser, to HM, components that are determined by HM to be defective will be repaired or replaced at no additional charge F.O.B. our factory.

This warranty requires the following:

- 1) **A completed and returned Warranty Registration card.**
- 2) **Use of Genuine Blast-it-all® OEM replacement parts purchased through Hess Manufacturing Inc. Blast-it-all® to include common wear items. For the entire period of the warranty.**
- 3) **Failures to provide proof of the purchase of Blast-it-all® OEM wear Items voids warranty.**

Manufacturer shall have the right to inspect prior replacing all merchandise in question.

Manufacturer shall not be required to pay any removal or installation charges whatsoever

Manufacturer shall not be held liable for prospective profits, special or consequential damages, nor shall any recovery of any kind against manufacturer be greater in amount the cost of the repairs of defects in workmanship

This warranty does not apply to damage caused by accidents, damage occurring during transit, alterations by unauthorized personnel, abuse or damage by flood, fire or acts of God, nor by artificially generated electric currents or any other cause whatsoever except defects in material or factory workmanship.

In ALL cases, defective parts must be returned to Hess Manufacturing Inc. before credit is issued.

This warranty is in lieu of all other warranties expressed, written or implied and releases Hess Manufacturing Inc. of all other obligations and liabilities whatsoever. This warranty neither assumes nor authorizes any person any obligation other than those specified by this warranty.



**DO NOT USE SAND! SAND WILL CAUSE SILICA DUST, WHICH IS THE CAUSE OF SILICOSIS DISEASE, A CONDITION OF MASSIVE FIBROSIS OF THE LUNGS. THIS STATEMENT INDICATES POTENTIAL PERSONEL HAZARD. FAILURE TO COMPLY WITH THESE INSTRUCTIONS MAY RESULT IN PERSONAL INJURY.**