

LITTLE BLASTER™

HESS AND ASSOCIATES, INC.

BLAST-IT-ALL®

P.O. BOX 1615

SALISBURY, NC 28145

WWW.BLAST-IT-ALL.COM

LITTLE BLASTER™

LBT-3 WITH 300 CFM RECLAIM

MANUAL NUMBER: 506

TABLE OF CONTENTS

| PAGE | FIGURE | |
|------|--------|------------------------------------|
| 1 | - | SET-UP INSTRUCTIONS |
| 1 | - | OPERATING INSTRUCTIONS |
| 1 | - | GENERAL MAINTENANCE |
| 2 | 1 | STANDARD CABINET AND RECLAIM PARTS |
| 3 | 2 | BASKET DRIVE & PARTS |
| 4 | 3 | BASKET |
| 5 | 4 | MEDIA HOSE & PARTS |
| 6 | 5 | MEDIA VALVE |
| 7 | 6 | BASKET DRIVE |
| 8 | 7 | AIR CONTROL |
| 9 | 8 | BLAST GUN |
| 10 | 9 | ELECTRICAL BOX |
| 11 | 10 | ELECTRICAL DIAGRAM |
| 12 | 11 | BASKET COVER |
| 13 | - | MACHINE WARRANTY |



**** WARNING ****

DO NOT USE SAND. SAND WILL CAUSE SILICA DUST, WHICH IS THE CAUSE OF SILICOSIS DISEASE, A CONDITION OF MASSIVE FIBROSIS OF THE LUNGS. THIS STATEMENT INDICATES A POTENTIAL PERSONNEL HAZARD. FAILURE TO COMPLY WITH THESE INSTRUCTIONS MAY RESULT IN PERSONAL INJURY.

WEBSITE CONCERNING SILICOSIS:

http://www.osha.gov/Silica/IT69D_1.html

LITTLE BLASTER™

SET-UP INSTRUCTIONS

MACHINES WITH 300 CFM RECLAIM

*** READ BEFORE OPERATING EQUIPMENT ***

1. Remove plastic from machine. (DO NOT USE QUICK-DISCONNECTS)
 2. Remove lag bolts from each of the four legs, then remove machine from the pallet.
 3. Remove bag & clamp from machine.
 4. Connect compressed air supply to air filter. Air piping should be of the same size as the connection point, offering no restriction to flow.
 5. Connect the factory installed male cord from electrical box, to a 120-Volt, 60 HZ, 1 Phase power supply. A 20 AMP breaker or fuse should be used.
- MAKE SURE MACHINE IS PROPERLY GROUNDED.

OPERATING INSTRUCTIONS

1. Preparing parts for Blasting:

All parts to be processed must be free of oil, grease, and moisture. Make sure parts are dry before putting into basket for cleaning.

2. Air Pressure:

5 PSI to 80 PSI. Set air pressure at 80 PSIG. Most parts for blasting cleaning cabinet should be blasted at 80 psi. Designate parts to be processed, start at lower pressure and work up the PSI scale to obtain desired finish.

WARNING

DO NOT CONNECT TO HIGH PRESSURE BOTTLE GAS, RUPTURE AND EXPLOSION CAN OCCUR.

GENERAL MAINTENANCE

1. Blasting Gun:

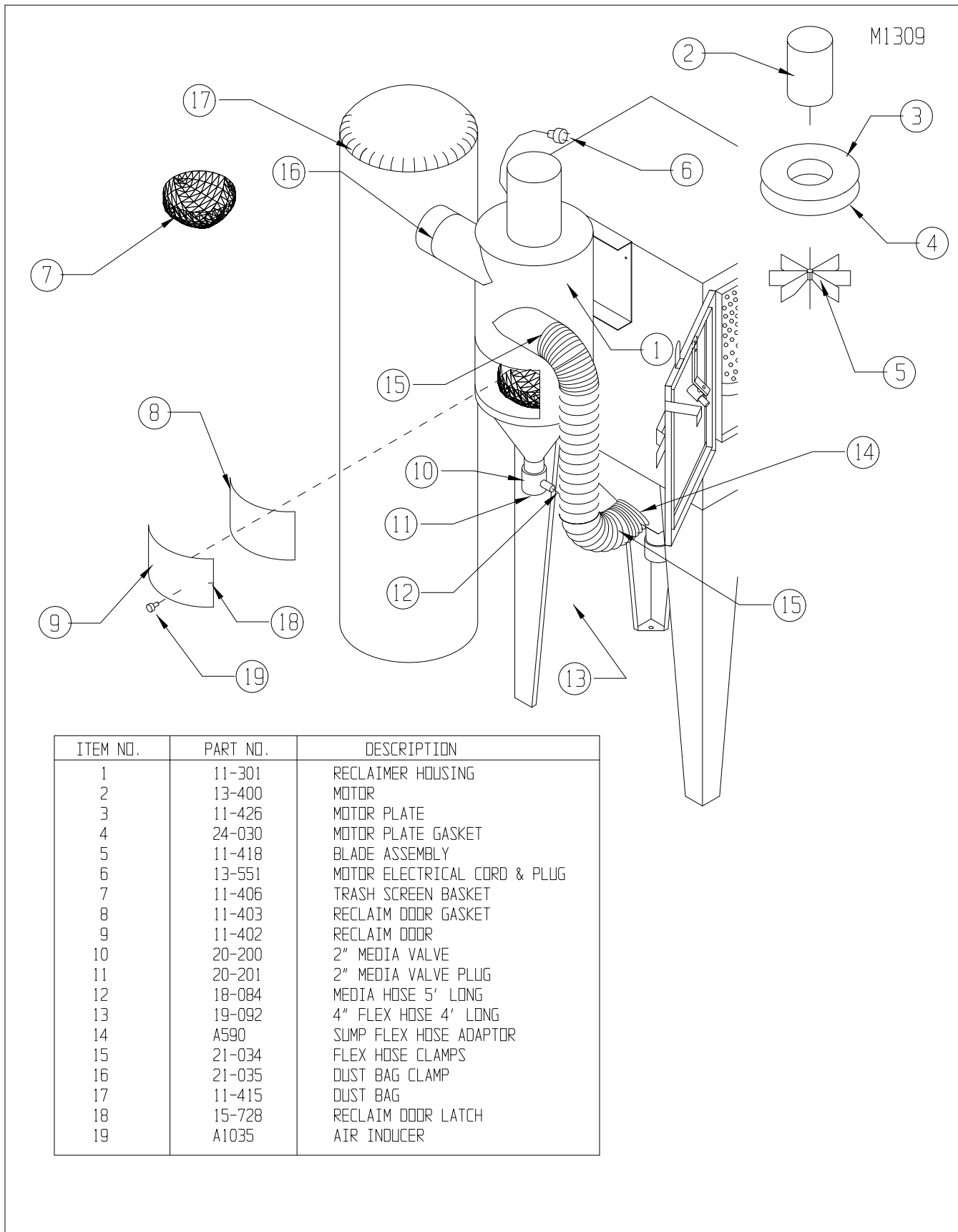
After 10 - 12 hours of blasting time the air orifice and nozzle should be checked. If the nozzle shows wear, rotate 1/4 turn to prevent uneven wear. If this is not checked, it could result in destruction of nozzle and damage to the gun housing. If wear is detected on the orifice tip, replace.

2. Caking of Media:

Media caking is caused by moisture in compressed air supply or oily and greasy parts. If this is not corrected, media will not flow and will clog gun. Check air supply. If water or moisture is present, install a good moisture trap. If oily or greasy parts are being blast treated, you should first degrease and dry parts.

LITTLE-BLASTER™

LB-300 CFM RECLAIMER



| ITEM NO. | PART NO. | DESCRIPTION |
|----------|----------|------------------------------|
| 1 | 11-301 | RECLAIMER HOUSING |
| 2 | 13-400 | MOTOR |
| 3 | 11-426 | MOTOR PLATE |
| 4 | 24-030 | MOTOR PLATE GASKET |
| 5 | 11-418 | BLADE ASSEMBLY |
| 6 | 13-551 | MOTOR ELECTRICAL CORD & PLUG |
| 7 | 11-406 | TRASH SCREEN BASKET |
| 8 | 11-403 | RECLAIM DOOR GASKET |
| 9 | 11-402 | RECLAIM DOOR |
| 10 | 20-200 | 2" MEDIA VALVE |
| 11 | 20-201 | 2" MEDIA VALVE PLUG |
| 12 | 18-084 | MEDIA HOSE 5' LONG |
| 13 | 19-092 | 4" FLEX HOSE 4' LONG |
| 14 | A590 | SUMP FLEX HOSE ADAPTOR |
| 15 | 21-034 | FLEX HOSE CLAMPS |
| 16 | 21-035 | DUST BAG CLAMP |
| 17 | 11-415 | DUST BAG |
| 18 | 15-728 | RECLAIM DOOR LATCH |
| 19 | A1035 | AIR INDUCER |

Figure 1

LBT-3 CABINET PARTS

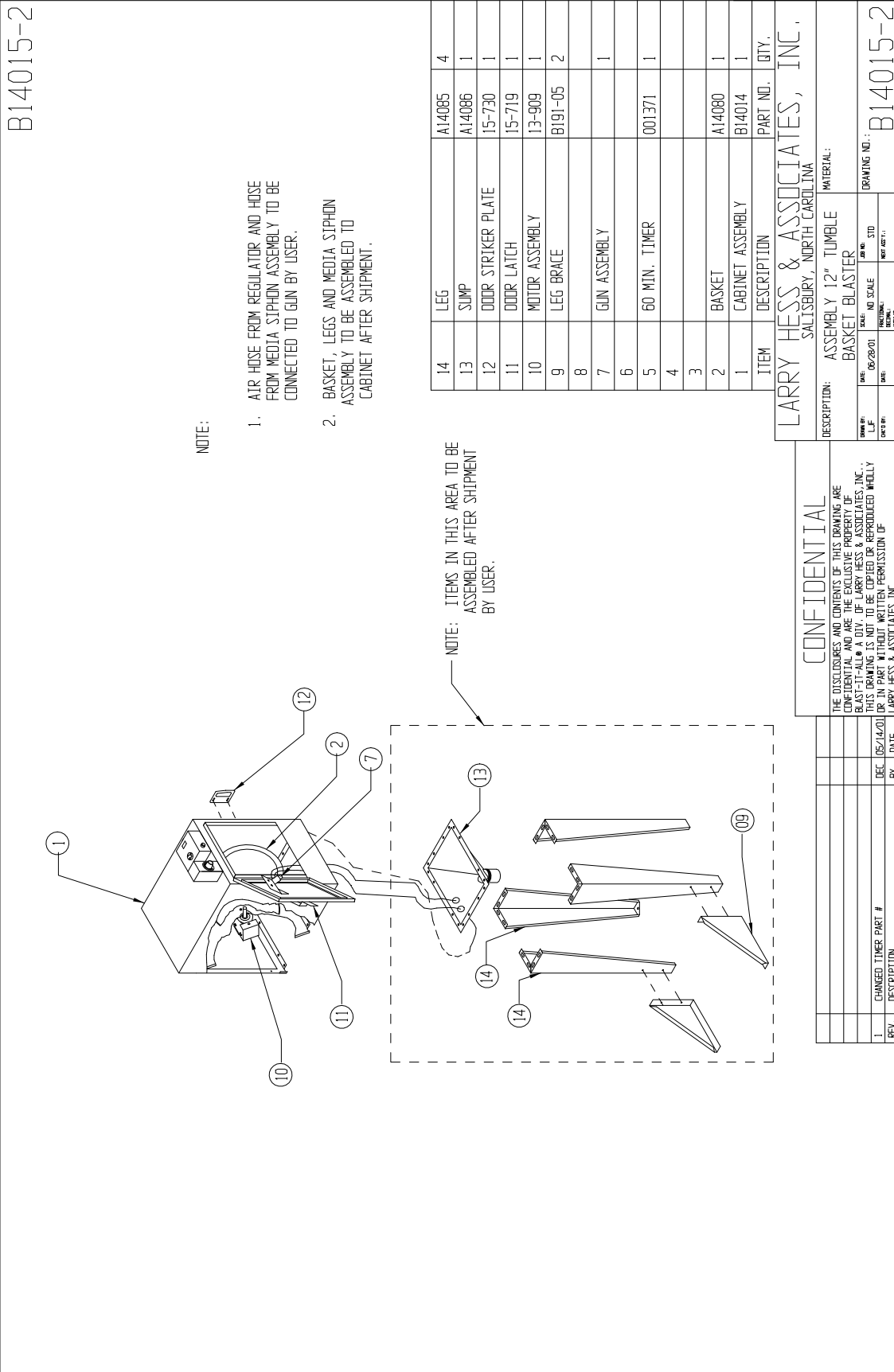


Figure 2

LBT-3 REPLACEMENT BASKET

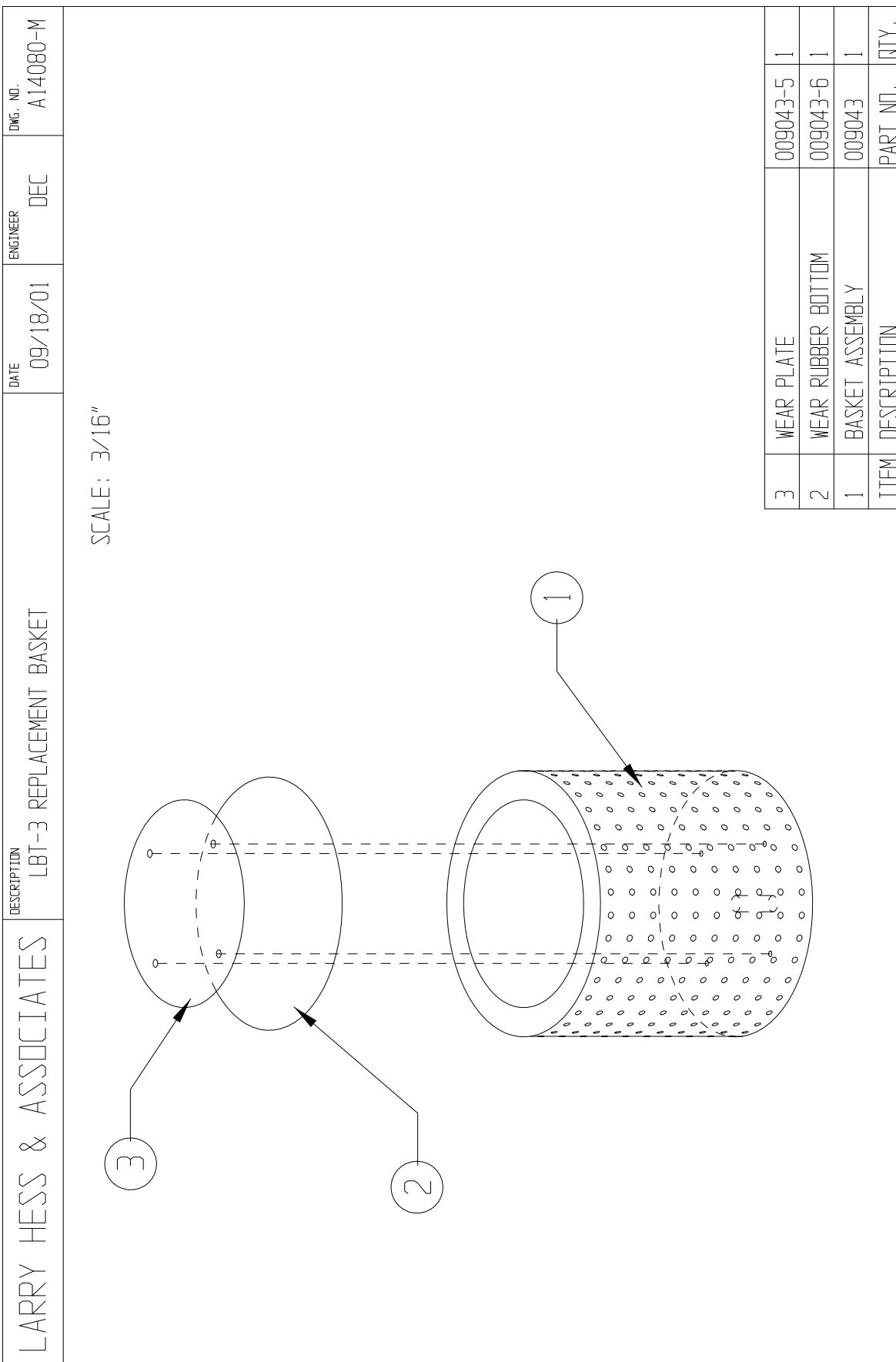


Figure 3

LBT-3 MEDIA SIPHON ASSEMBLY

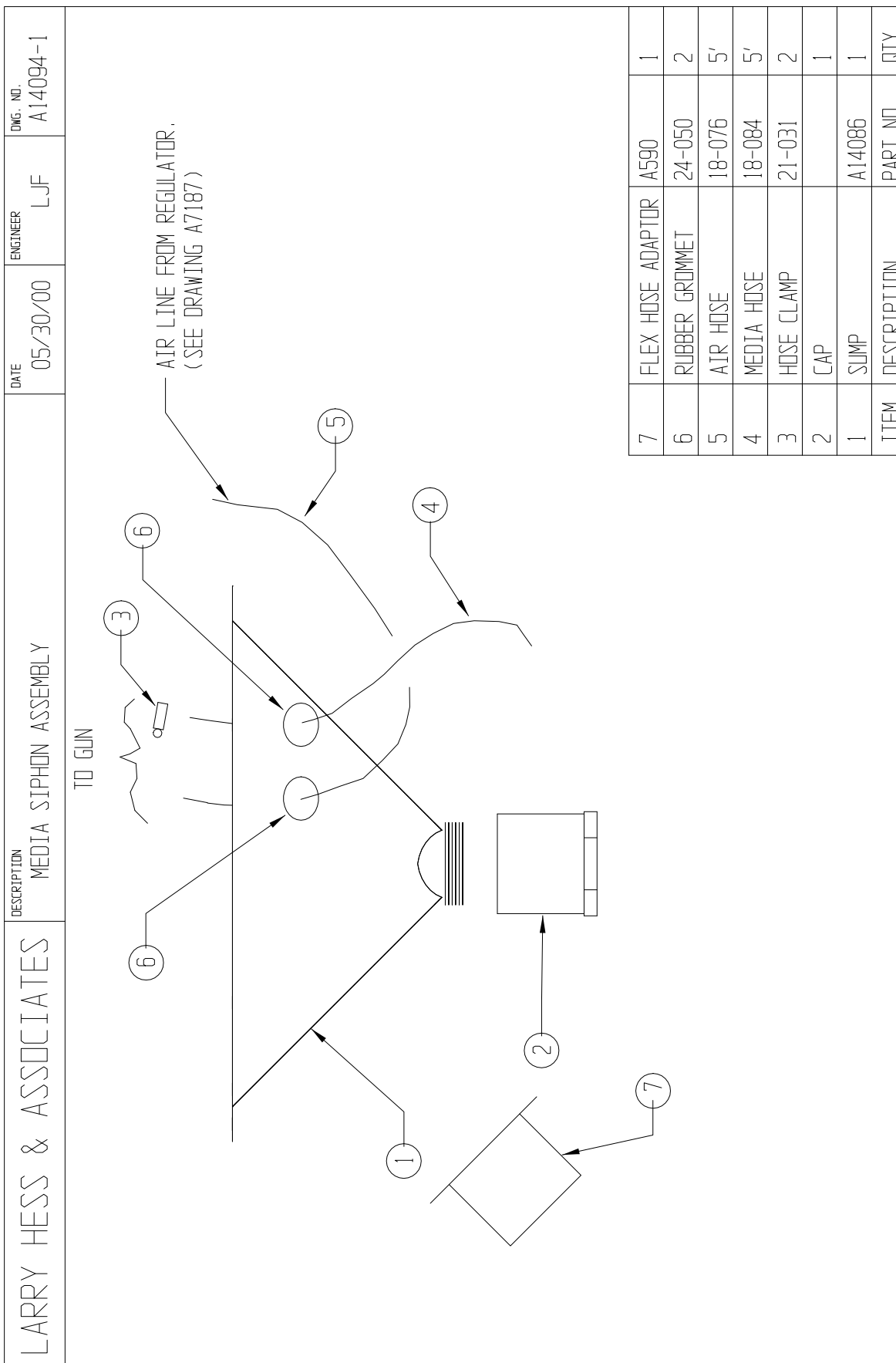
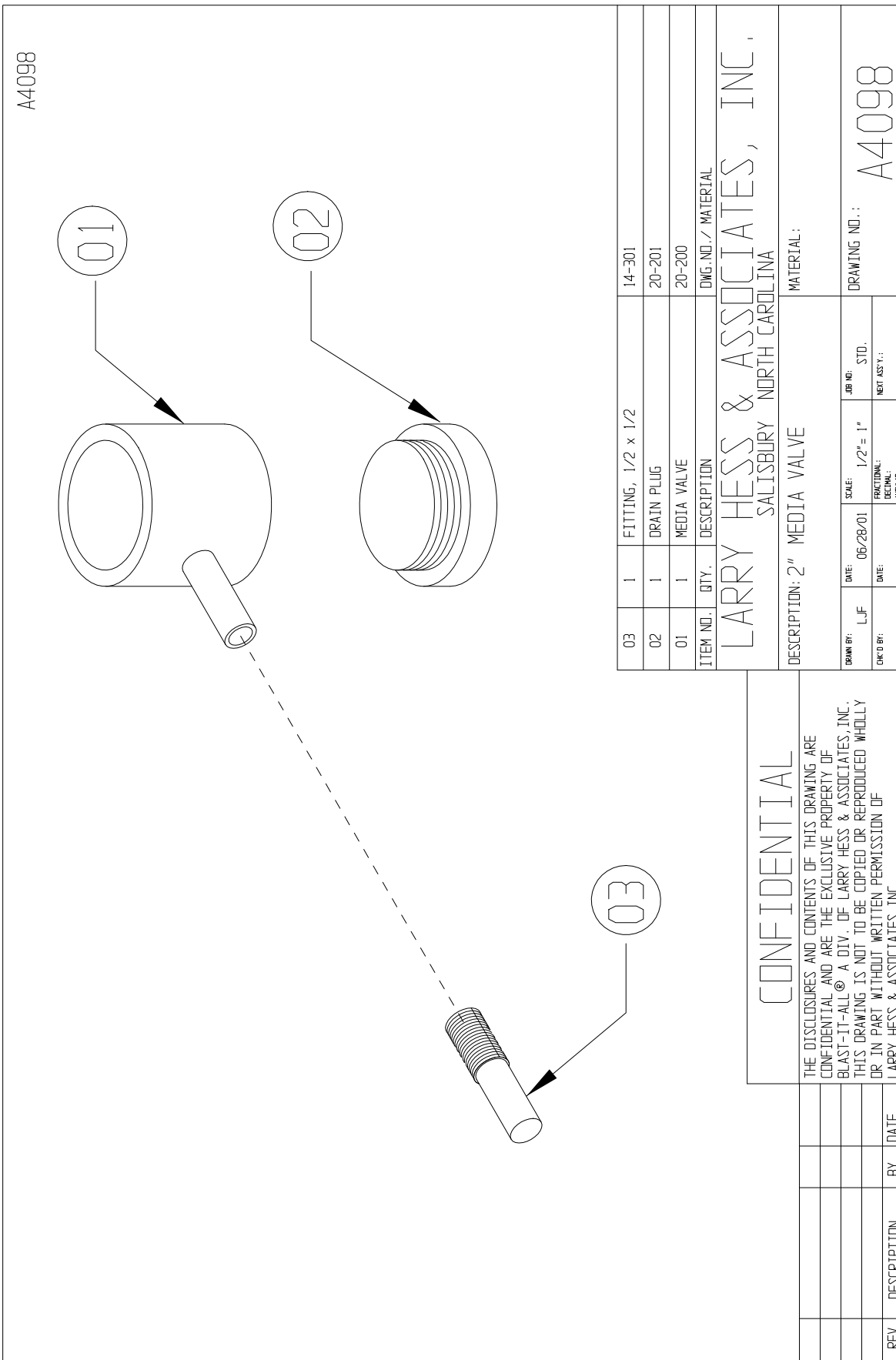


Figure 4

LBT-3 MEDIA VALVE



A4098

| | | | |
|---|----------|--------------------|---------------------|
| 03 | 1 | FITTING, 1/2 x 1/2 | 14-301 |
| 02 | 1 | DRAIN PLUG | 20-201 |
| 01 | 1 | MEDIA VALVE | 20-200 |
| ITEM NO. | QTY. | DESCRIPTION | DMG. NO. / MATERIAL |
| LARRY HESS & ASSOCIATES, INC. SALISBURY NORTH CAROLINA | | | |
| DESCRIPTION: 2" MEDIA VALVE | | | |
| MATERIAL: | | | |
| DATE: | DATE: | SCALE: | JOB NO. STD. |
| LJF | 06/28/01 | 1/2" = 1" | |
| DATE: | DATE: | FRACTIONAL: | NET ASY.: |
| | | DECIMAL: | |
| | | ANGULAR: | |
| | | | DRAWING NO.: A4098 |

CONFIDENTIAL

THE DISCLOSURES AND CONTENTS OF THIS DRAWING ARE CONFIDENTIAL AND ARE THE EXCLUSIVE PROPERTY OF BLAST-IT-ALL® A DIV. OF LARRY HESS & ASSOCIATES, INC. THIS DRAWING IS NOT TO BE COPIED OR REPRODUCED WHOLLY OR IN PART WITHOUT WRITTEN PERMISSION OF LARRY HESS & ASSOCIATES, INC.

| REV. | DESCRIPTION | BY | DATE |
|------|-------------|----|------|
| | | | |
| | | | |
| | | | |

Figure 5

LBT-3 MOTOR ASSEMBLY

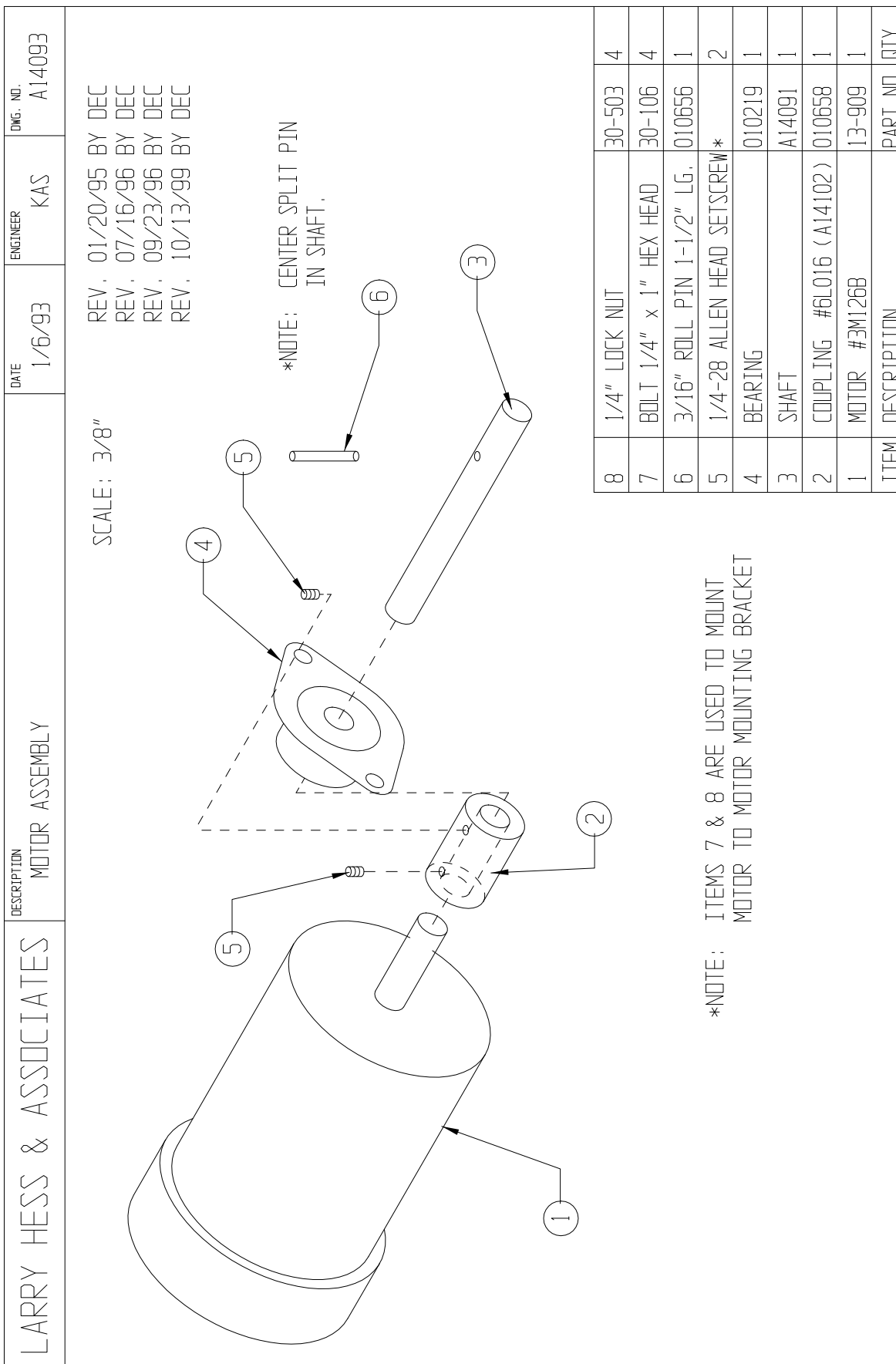
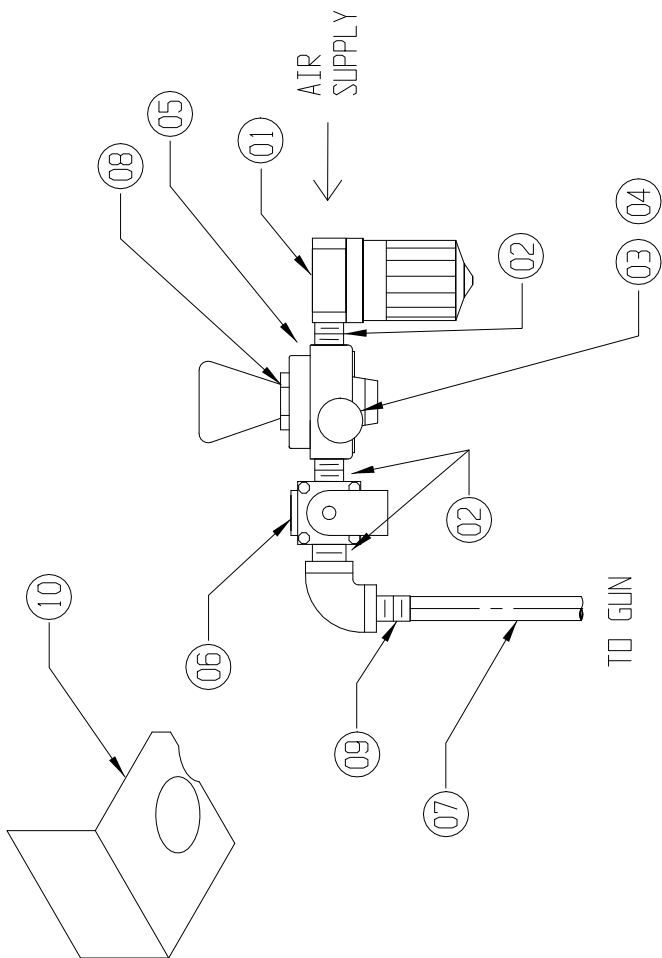


Figure 6

LBT-3 AIR CONTROLS

A7187



| | | | |
|----|---|------------------------|------------------|
| 10 | 1 | BRACKET | D105-13 |
| 09 | 1 | 1/2 x 1/2 BARB FITTING | 14-301 |
| 08 | 1 | LOCK RING | 16-965LR |
| 07 | 1 | Ø 1/2" AIR HOSE | 18-076 x 5' LONG |
| 06 | 1 | 1/2" SOLENOID | 13-514 |
| 05 | 1 | 1/2" REGULATOR | 16-965 |
| 04 | 1 | GAUGE, 1/4" | 16-819 |
| 03 | 1 | 1/2" STREET ELBOW | 14-372 |
| 02 | 2 | 1/2" CLOSE NIPPLE | 006249 |
| 01 | 1 | FILTER 1/2" | 16-966 |

| ITEM NO. | QTY. | DESCRIPTION | DWG. NO. / MATERIAL |
|----------|------|-------------|---------------------|
|----------|------|-------------|---------------------|

HESS MANUFACTURING, INC.
SALISBURY NORTH CAROLINA

DESCRIPTION: LBT-3
AIR CONTROLS

MATERIAL:

CONFIDENTIAL

THE DISCLOSURES AND CONTENTS OF THIS DRAWING ARE CONFIDENTIAL AND ARE THE EXCLUSIVE PROPERTY OF BLAST-IT-ALL® A DIV. OF HESS MANUFACTURING, INC. THIS DRAWING IS NOT TO BE COPIED OR REPRODUCED WHOLLY OR IN PART WITHOUT WRITTEN PERMISSION OF HESS MANUFACTURING, INC.

| 2 | CHGD 02 & 03 | DEC 08/01/24 | |
|------|--------------|--------------|------|
| 1 | ADD 3 ITEMS | LJF 06/27/01 | |
| REV. | DESCRIPTION | BY | DATE |

| | | | |
|-------|----------|-----------|--------|
| DATE: | 05/25/00 | SCALE: | N.T.S. |
| DATE: | | FUNCTION: | |
| DATE: | | REVISION: | |
| DATE: | | ANGLES: | |

| | |
|------------|--|
| JOB NO: | |
| KEY ASS'Y: | |

DRAWING NO.: A7187

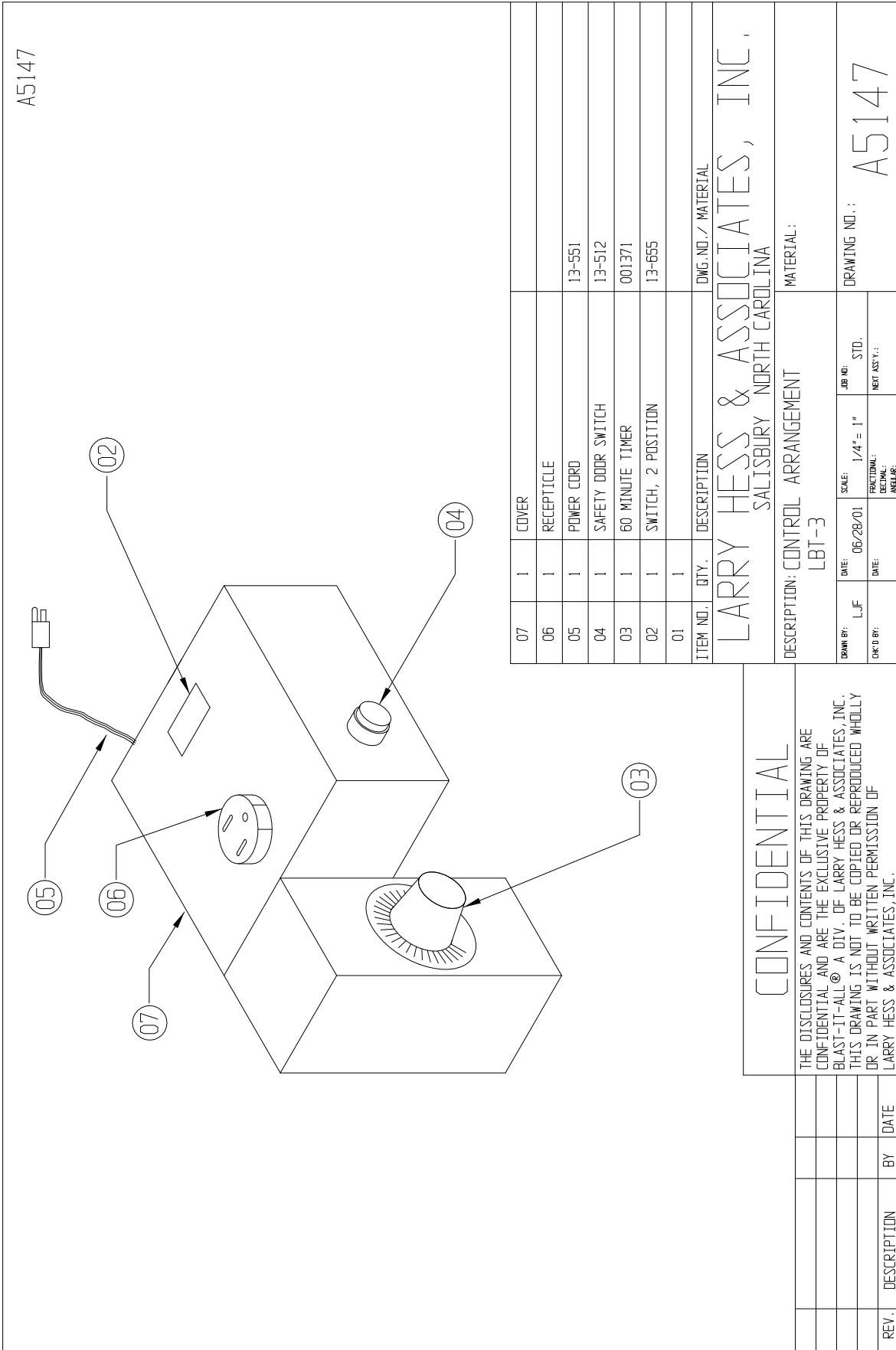
Figure 7

LBT-3 PRODUCTION GUN ASSEMBLY

| | | | | | |
|--|--|--------------------------|-------------------------|---------------------------|--|
| <p>LARRY HESS & ASSOCIATES</p> | <p>DESCRIPTION PRODUCTION GUN ASSEMBLY</p> | <p>DATE 12/21/92</p> | <p>ENGINEER KAS</p> | <p>DWG. NO. A9063</p> | |
| <p>REV. BY DEC 10/28/99 REV. BY L.J.F 05/30/00</p> | | | | | |
| | | | | | |
| <p>ITEM</p> | <p>DESCRIPTION</p> | <p>QTY</p> | <p>PART NO.</p> | | |
| <p>7</p> | <p>SEAL</p> | <p>1</p> | <p>20-033</p> | | |
| <p>6</p> | <p>"O" RING SEAL</p> | <p>1</p> | <p>20-053</p> | | |
| <p>5</p> | <p>NOZZLE NUT HOLDING</p> | <p>1</p> | <p>20-054</p> | | |
| <p>4</p> | <p>NOZZLE CARBIDE 7/16</p> | <p>1</p> | <p>20-087</p> | | |
| <p>4</p> | <p>NOZZLE CARBIDE 6/16</p> | <p>1</p> | <p>20-086</p> | | |
| <p>4</p> | <p>NOZZLE CARBIDE 5/16</p> | <p>1</p> | <p>20-085</p> | | |
| <p>4</p> | <p>NOZZLE CARBIDE 4/16</p> | <p>1</p> | <p>20-084</p> | | |
| <p>3</p> | <p>DRIFICE 7/32</p> | <p>1</p> | <p>20-037</p> | | |
| <p>3</p> | <p>DRIFICE 6/32</p> | <p>1</p> | <p>20-036</p> | | |
| <p>3</p> | <p>DRIFICE 5/32</p> | <p>1</p> | <p>20-035</p> | | |
| <p>3</p> | <p>DRIFICE 4/32</p> | <p>1</p> | <p>20-034</p> | | |
| <p>2</p> | <p>FITTING DRIFICE HOLDING</p> | <p>1</p> | <p>20-032</p> | | |
| <p>1</p> | <p>GUN HOUSING (RIGHT MOUNT)</p> | <p>1</p> | <p>20-023</p> | | |

Figure 8

LBT-3 CONTROL ARRANGEMENT



A5147

| | | | |
|----|---|--------------------|--------|
| 07 | 1 | COVER | |
| 06 | 1 | RECEPTACLE | |
| 05 | 1 | POWER CORD | 13-551 |
| 04 | 1 | SAFETY DOOR SWITCH | 13-512 |
| 03 | 1 | 60 MINUTE TIMER | 001371 |
| 02 | 1 | SWITCH, 2 POSITION | 13-655 |
| 01 | 1 | | |

ITEM NO. QTY. DESCRIPTION DWG. NO./ MATERIAL
 LARRY HESS & ASSOCIATES, INC.
 SALISBURY NORTH CAROLINA

DESCRIPTION: CONTROL ARRANGEMENT
 LBT-3 MATERIAL:

| | | | | | |
|-----------|----------|-------------|-----------|--------------|-------|
| DATE: | 06/28/01 | SCALE: | 1/4" = 1" | JOB NO.: | STD. |
| DRW'N BY: | LJF | FRACTIONAL: | | NEXT ASS'Y.: | |
| CHK'D BY: | | DATE: | | DRAWING NO.: | A5147 |

CONFIDENTIAL

THE DISCLOSURES AND CONTENTS OF THIS DRAWING ARE CONFIDENTIAL AND ARE THE EXCLUSIVE PROPERTY OF BLAST-IT-ALL® A DIV. OF LARRY HESS & ASSOCIATES, INC. THIS DRAWING IS NOT TO BE COPIED OR REPRODUCED WHOLLY OR IN PART WITHOUT WRITTEN PERMISSION OF LARRY HESS & ASSOCIATES, INC.

| REV. | DESCRIPTION | BY | DATE |
|------|-------------|----|------|
| | | | |
| | | | |
| | | | |

Figure 9

LBT-3 WIRING DIAGRAM

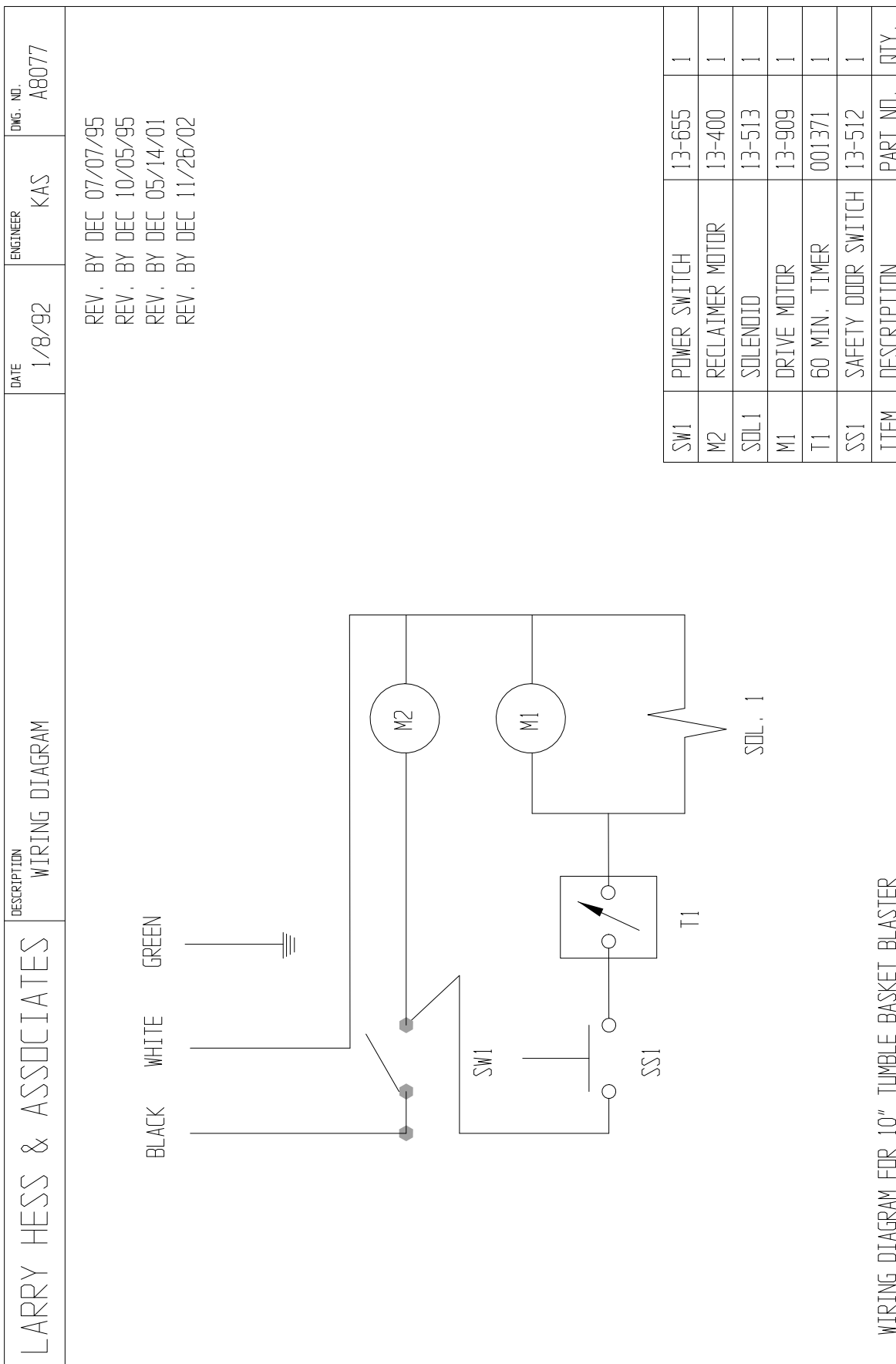


Figure 10



COVER PN# A14151-1





BLAST-IT-ALL®

A Division of Hess Manufacturing Inc.
185 Piper Lane Salisbury, NC 28147
P O Box 1615 Salisbury, NC 28145
Toll Free 800-535-2612
Fax 704-638-9311



Hess Manufacturing Inc. Warrants to the original purchaser of the merchandise sold, to be free from defects in material or workmanship under normal use and service for a period of (5) years. **This warranty does not cover typical wear items.** Upon prompt notification by the purchaser, to HM, components that are determined by HM to be defective will be repaired or replaced at no additional charge F.O.B. our factory.

This warranty requires the following:

- 1) **A completed and returned Warranty Registration card.**
- 2) **Use of Genuine Blast-it-all® OEM replacement parts purchased through Hess Manufacturing Inc. Blast-it-all® to include common wear items. For the entire period of the warranty.**
- 3) **Failures to provide proof of the purchase of Blast-it-all® OEM wear Items voids warranty.**

Manufacturer shall have the right to inspect prior replacing all merchandise in question.

Manufacturer shall not be required to pay any removal or installation charges whatsoever

Manufacturer shall not be held liable for prospective profits, special or consequential damages, nor shall any recovery of any kind against manufacturer be greater in amount the cost of the repairs of defects in workmanship

This warranty does not apply to damage caused by accidents, damage occurring during transit, alterations by unauthorized personnel, abuse or damage by flood, fire or acts of God, nor by artificially generated electric currents or any other cause whatsoever except defects in material or factory workmanship.

In ALL cases, defective parts must be returned to Hess Manufacturing Inc. before credit is issued.

This warranty is in lieu of all other warranties expressed, written or implied and releases Hess Manufacturing Inc. of all other obligations and liabilities whatsoever. This warranty neither assumes nor authorizes any person any obligation other than those specified by this warranty.



DO NOT USE SAND! SAND WILL CAUSE SILICA DUST, WHICH IS THE CAUSE OF SILICOSIS DISEASE, A CONDITION OF MASSIVE FIBROSIS OF THE LUNGS. THIS STATEMENT INDICATES POTENTIAL PERSONEL HAZARD. FAILURE TO COMPLY WITH THESE INSTRUCTIONS MAY RESULT IN PERSONAL INJURY.